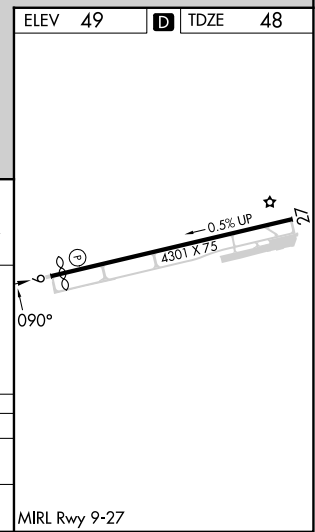
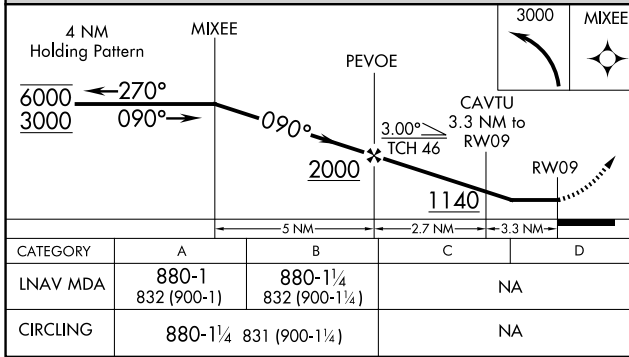
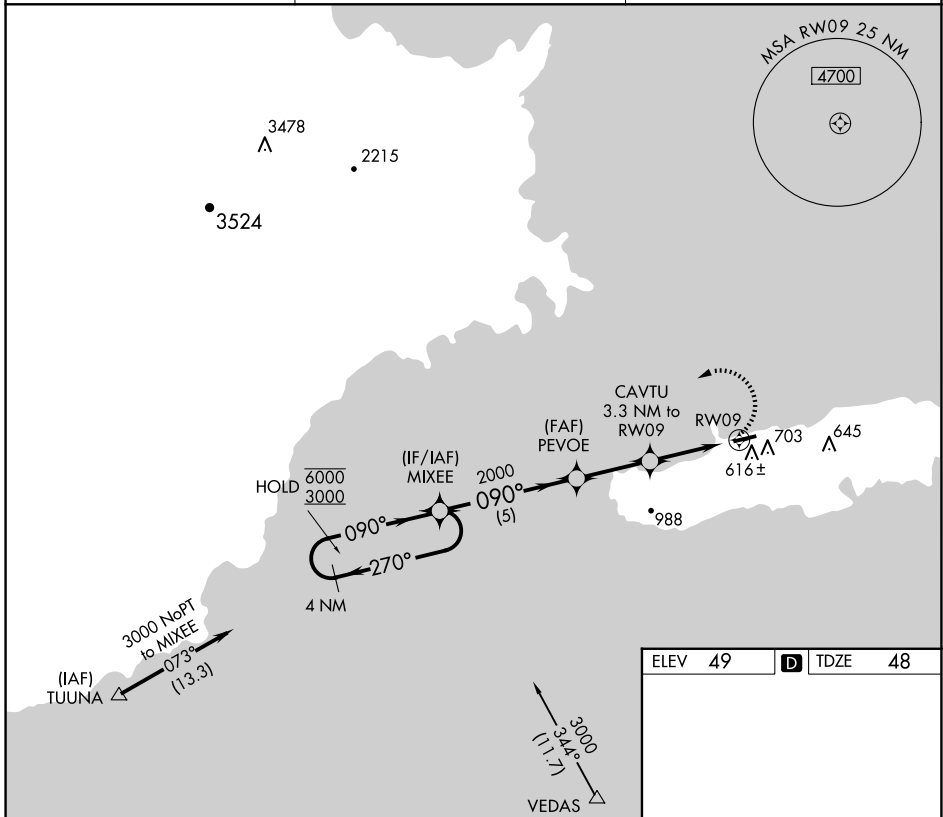


APP CRS	Rwy Idg	<b>3405</b>
<b>090°</b>	TDZE	<b>48</b>
	Apt Elev	<b>49</b>

# RNAV (GPS) RWY 9

ANTONIO RIVERA RODRIGUEZ (VQS)(TJVQ)

RNP APCH-GPS.		MISSED APPROACH: Climbing left turn to 3000 direct MIXEE and hold.
⚠ NA Circling NA south of Rwy 9-27. Rwy 9 helicopter visibility reduction below 1 SM NA. Procedure NA at night. Use SJU/TJSJ altimeter setting.		
SJU/TJSJ ASOS <b>125.8</b>	SAN JUAN CERAP APP CON <b>128.65 279.6</b>	UNICOM <b>123.0 (CTAF)</b>



SE-3, 19 FEB 2026 to 19 MAR 2026

SE-3, 19 FEB 2026 to 19 MAR 2026