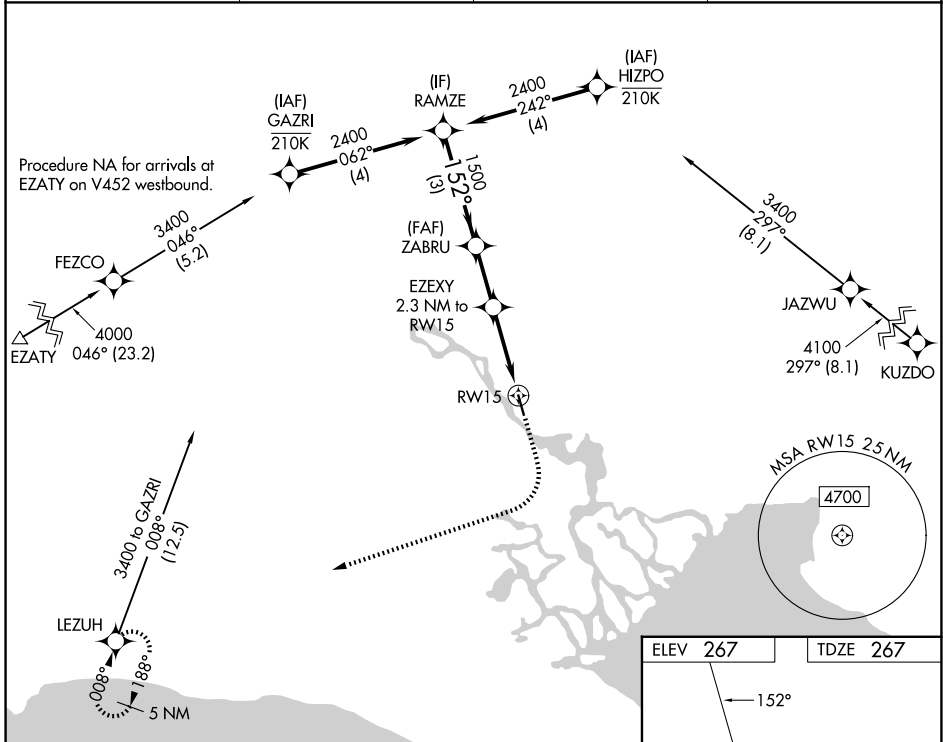


WAAS CH 82331 W15A	APP CRS 152°	Rwy Ldg TDZE Apt Elev	3000 267 267
--	------------------------	-----------------------------	---

RNAV (GPS) RWY 15

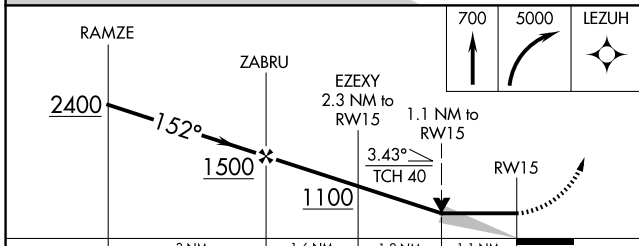
WHITE MOUNTAIN (WMO) (P A W M)

RNP APCH.		MISSED APPROACH: Climb to 700 then climbing right turn to 5000 direct LEZUH and hold, continue climb-in-hold to 5000.	
Circling NA northeast of Rwy 15-33.		AWOS-3P 121.45	ANCHORAGE CENTER 133.3 290.4
		NOME RADIO 122.05	CTAF 122.9 0

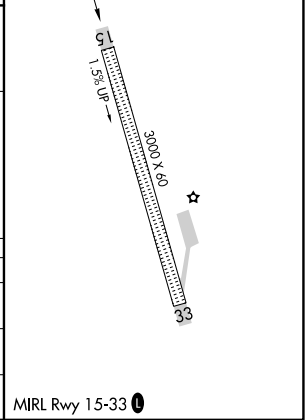


AK, 22 JAN 2026 to 19 MAR 2026

AK, 22 JAN 2026 to 19 MAR 2026



ELEV 267	TDZE 267
----------	----------



	3 NM		1.6 NM		1.2 NM		1.1 NM	
CATEGORY	A		B		C		D	
LP MDA	660-1 393 (400-1)		660-1 393 (400-1 1/8)		800-1 533 (600-1 1/2)		NA	
LNAV MDA	800-1 533 (600-1)		800-1 533 (600-1 1/2)		1080-2 1/2 813 (900-2 1/2)		NA	
CIRCLING	800-1 533 (600-1)		1080-2 1/2 813 (900-2 1/2)					

MIRL Rwy 15-33 0