

GNDLF THREE ARRIVAL (RNAV) Transition Routes
(GNDLF, GNDLF3) 27NOV25

ATLANTA APP CON
127.9 379.9
D-ATIS ARR
119.65

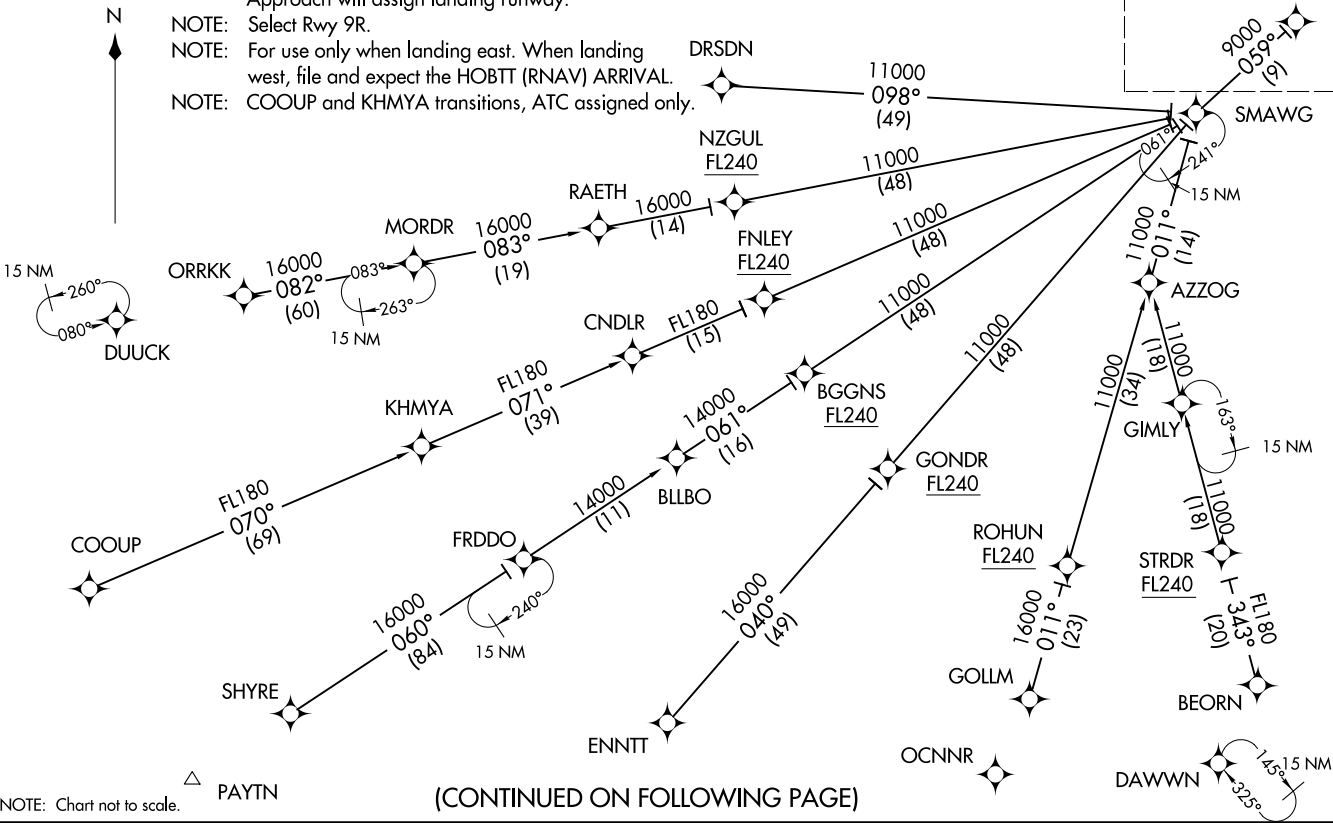
RNAV 1-DME/DME/IRU or GPS.

RADAR required.

See following page for Arrival Routes. GNDLF

11000 250K

- NOTE: Jet aircraft only.
- NOTE: Expect "descend via" clearance from Center. Approach will assign landing runway.
- NOTE: Select Rwy 9R.
- NOTE: For use only when landing east. When landing west, file and expect the HOBTT (RNAV) ARRIVAL.
- NOTE: COOUP and KHYMYA transitions, ATC assigned only.



NOTE: Chart not to scale.

(CONTINUED ON FOLLOWING PAGE)

(GNDLF, GNDLF3) 25331
AL-26 (FAA) HARTSFIELD/JACKSON ATLANTA INTL (ATL)
ATLANTA, GEORGIA
GNDLF THREE ARRIVAL (RNAV) Transition Routes

GNDLF THREE ARRIVAL (RNAV) Arrival Routes
 (GNDLF.GNDLF3) 27NOV25
 ATLANTA, GEORGIA
 HARTSFIELD/JACKSON ATLANTA INTL (ATL)

ARRIVAL ROUTE DESCRIPTION

- BEORN TRANSITION (BEORN.GNDLF3):
- COOUP TRANSITION (COOUP.GNDLF3):
- DRSDN TRANSITION (DRSDN.GNDLF3):
- ENNTT TRANSITION (ENNTT.GNDLF3):
- FRDDO TRANSITION (FRDDO.GNDLF3):
- GOLLM TRANSITION (GOLLM.GNDLF3):
- KHMYA TRANSITION (KHMYA.GNDLF3):
- ORRKK TRANSITION (ORRKK.GNDLF3):
- SHYRE TRANSITION (SHYRE.GNDLF3):
- STRDR TRANSITION (STRDR.GNDLF3):

From GNDLF on track 059° to cross HALRR at or above 10000 and at 250K, then on track 059° to cross SHULR at 8000, then on track 036° to JNGLE, then on track 005° to QUBIT, then on track 005°. Expect RADAR vectors to final approach course.

LOST COMMUNICATIONS:

ASSIGNED RUNWAY 10 or RUNWAY NOT ASSIGNED: Cross HALRR at or above 10000; cross SHULR at 8000; cross QUBIT at 5000; after QUBIT descend to 3000 and proceed direct DEWHY; proceed on the ILS or RNAV Rwy 10 approach.

ASSIGNED RUNWAY 9L: Cross HALRR at or above 10000; cross SHULR at 8000; cross QUBIT at 6000; after QUBIT proceed direct RYENN and proceed on the ILS or RNAV Rwy 9L approach.

ASSIGNED RUNWAY 9R: Cross HALRR at or above 10000; cross SHULR at 8000; cross QUBIT at 6000; after QUBIT proceed direct ANDIY and proceed on the ILS or RNAV Rwy 9R approach.

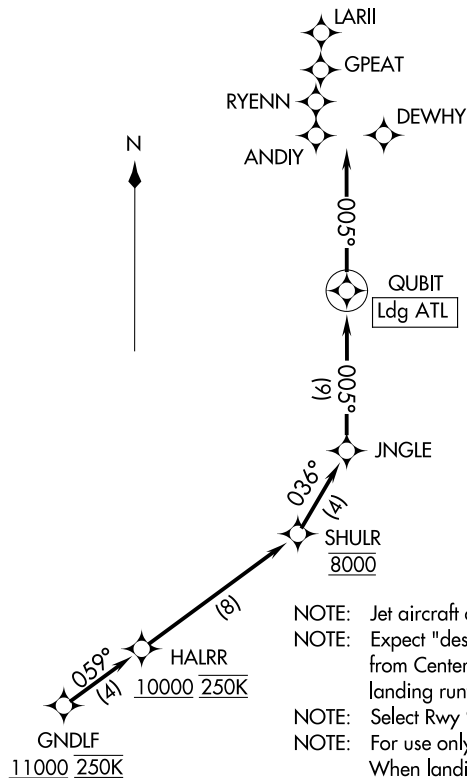
ASSIGNED RUNWAY 8L: Cross HALRR at or above 10000; cross SHULR at 8000; cross QUBIT at 6000; after QUBIT proceed direct LARII and proceed on the ILS or RNAV Rwy 8L approach.

ASSIGNED RUNWAY 8R: Cross HALRR at or above 10000; cross SHULR at 8000; cross QUBIT at 6000; after QUBIT proceed direct GPEAT and proceed on the ILS or RNAV Rwy 8R approach.

RNAV 1-DME/DME/IRU or GPS.

RADAR required.

ATLANTA APP CON
127.9 379.9
D-ATIS ARR
119.65



- NOTE: Jet aircraft only.
- NOTE: Expect "descend via" clearance from Center. Approach will assign landing runway.
- NOTE: Select Rwy 9R.
- NOTE: For use only when landing east. When landing west, file and expect the HOBTT (RNAV) ARRIVAL.
- NOTE: COOUP and KHMYA transitions, ATC assigned only.

NOTE: Chart not to scale.

(GNDLF.GNDLF3) 25331
 ATL-26 (FAA)
 HARTSFIELD/JACKSON ATLANTA INTL (ATL)
 ATLANTA, GEORGIA