

NASSA TWO DEPARTURE (RNAV) Departure Routes  
 (NASSA2, NASSA) 10N0V16  
 ATLANTA, GEORGIA  
 HARTSFIELD/JACKSON ATLANTA INTL (ATL)  
 ATLANTA, GEORGIA

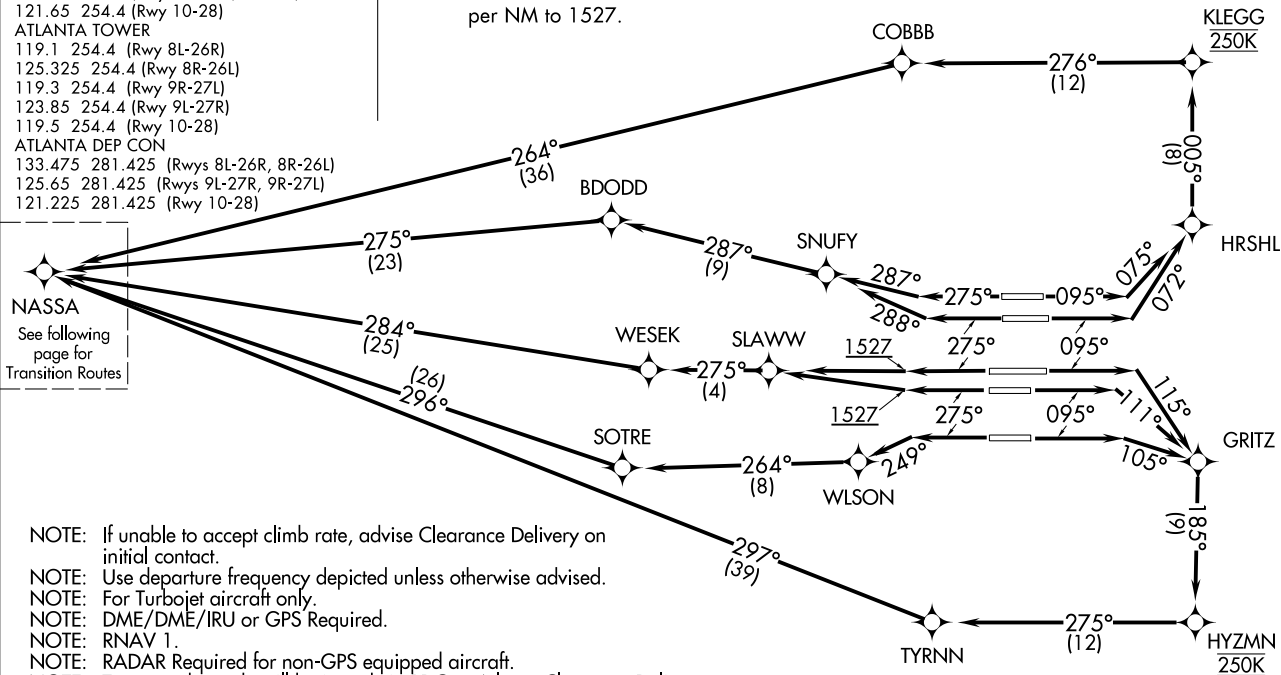
D-ATIS 125.55  
 CLNC DEL 118.1  
 CPDLC  
 GND CON  
 121.9 254.4 (Rwys 8L-26R, 8R-26L)  
 121.75 254.4 (Rwys 9L-27R, 9R-27L)  
 121.65 254.4 (Rwy 10-28)  
 ATLANTA TOWER  
 119.1 254.4 (Rwy 8L-26R)  
 125.325 254.4 (Rwy 8R-26L)  
 119.3 254.4 (Rwy 9R-27L)  
 123.85 254.4 (Rwy 9L-27R)  
 119.5 254.4 (Rwy 10-28)  
 ATLANTA DEP CON  
 133.475 281.425 (Rwys 8L-26R, 8R-26L)  
 125.65 281.425 (Rwys 9L-27R, 9R-27L)  
 121.225 281.425 (Rwy 10-28)



TAKEOFF MINIMUMS:

Rwys 8L/R, 9L/R, 10, 26L/R, 27L/R, 28:  
 Standard with minimum climb of 500'  
 per NM to 1527.

**TOP ALTITUDE:  
 10000**



NASSA  
 See following page for Transition Routes

- NOTE: If unable to accept climb rate, advise Clearance Delivery on initial contact.
- NOTE: Use departure frequency depicted unless otherwise advised.
- NOTE: For Turbojet aircraft only.
- NOTE: DME/DME/IRU or GPS Required.
- NOTE: RNAV 1.
- NOTE: RADAR Required for non-GPS equipped aircraft.
- NOTE: Transponder code will be issued via PDC or Atlanta Clearance Delivery.
- NOTE: Accelerate to 250 KIAS, if unable, advise both Tower and Departure Control on initial contact.
- NOTE: Aircraft at Midfield Ramps will advise Ramp Towers of departure SID prior to pushback. Upon receipt of ATC clearance (from ATL Clearance Delivery), read back only your call sign and transponder code, unless you have a question.

(CONTINUED ON FOLLOWING PAGE)

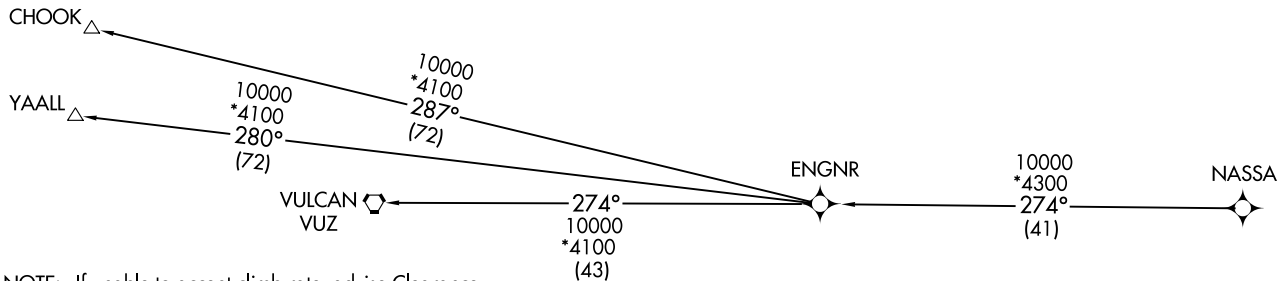
NOTE: Chart not to scale.

(NASSA2, NASSA) 24305  
 NASSA TWO DEPARTURE (RNAV) Departure Routes  
 ATL-26 (FAA)  
 HARTSFIELD/JACKSON ATLANTA INTL (ATL)  
 ATLANTA, GEORGIA

**TOP ALTITUDE:  
10000**

D-ATIS 125.55  
 CLNC DEL 118.1  
 CPDLC  
 GND CON  
 121.9 254.4 (Rwys 8L-26R, 8R-26L)  
 121.75 254.4 (Rwys 9L-27R, 9R-27L)  
 121.65 254.4 (Rwy 10-28)  
 ATLANTA TOWER  
 119.1 254.4 (Rwy 8L-26R)  
 125.325 254.4 (Rwy 8R-26L)  
 119.3 254.4 (Rwy 9R-27L)  
 123.85 254.4 (Rwy 9L-27R)  
 119.5 254.4 (Rwy 10-28)  
 ATLANTA DEP CON  
 133.475 281.425 (Rwys 8L-26R, 8R-26L)  
 125.65 281.425 (Rwys 9L-27R, 9R-27L)  
 121.225 281.425 (Rwy 10-28)

TAKEOFF MINIMUMS:  
 Rwys 8L/R, 9L/R, 10, 26L/R, 27L/R, 28:  
 Standard with minimum climb of 500'  
 per NM to 1527.



- NOTE: If unable to accept climb rate, advise Clearance Delivery on initial contact.  
 NOTE: Use departure frequency depicted unless otherwise advised.  
 NOTE: For Turbojet aircraft only.  
 NOTE: DME/DME/IRU or GPS Required.  
 NOTE: RNAV 1.  
 NOTE: RADAR Required for non-GPS equipped aircraft.  
 NOTE: Transponder code will be issued via PDC or Atlanta Clearance Delivery.  
 NOTE: Accelerate to 250 KIAS, if unable, advise both Tower and Departure Control on initial contact.  
 NOTE: Aircraft at Midfield Ramps will advise Ramp Towers of departure SID prior to pushback.  
 NOTE: Aircraft at Midfield Ramps will advise Ramp Towers of departure SID prior to pushback.  
 Upon receipt of ATC clearance (from ATL Clearance Delivery), read back only your call sign and transponder code, unless you have a question.

(CONTINUED ON FOLLOWING PAGE)

NOTE: Chart not to scale.

NASSA TWO DEPARTURE (RNAV) Transition Routes  
 (NASSA2,NASSA) 10NDW16  
 ATLANTA, GEORGIA  
 HARTSFIELD/JACKSON ATLANTA INTL(ATL)

(NASSA2,NASSA) 24305  
 NASSA TWO DEPARTURE (RNAV) Transition Routes  
 AL-26 (FAA)  
 HARTSFIELD/JACKSON ATLANTA INTL(ATL)  
 ATLANTA, GEORGIA



DEPARTURE ROUTE DESCRIPTION  
SEE ADDITIONAL REQUIREMENTS ON AAUP

TAKEOFF RWY 8L: Climb heading 095° to intercept course 075° to HRSHL, then on depicted route to NASSA, maintain 250 KIAS until KLEGG, thence. . . .

TAKEOFF RWY 8R: Climb heading 095° to intercept course 072° to HRSHL, then on depicted route to NASSA, maintain 250 KIAS until KLEGG, thence. . . .

TAKEOFF RWY 9L: Climb heading 095° to intercept course 115° to GRITZ, then on depicted route to NASSA, maintain 250 KIAS until HYZMN, thence. . . .

TAKEOFF RWY 9R: Climb heading 095° to intercept course 111° to GRITZ, then on depicted route to NASSA, maintain 250 KIAS until HYZMN, thence. . . .

TAKEOFF RWY 10: Climb heading 095° to intercept course 105° to GRITZ, then on depicted route to NASSA, maintain 250 KIAS until HYZMN, thence. . . .

TAKEOFF RWY 26L: Climb heading 275° to intercept course 288° to SNUFY, then on depicted route to NASSA, thence. . . .

TAKEOFF RWY 26R: Climb heading 275° to intercept course 287° to SNUFY, then on depicted route to NASSA, thence. . . .

TAKEOFF RWYS 27L/R: Climb heading 275° to 1527, then direct SLAWW, then on depicted route to NASSA, thence. . . .

TAKEOFF RWY 28: Climb heading 275° to intercept course 249° to WLSON, then on depicted route to NASSA, thence. . . .

. . . .maintain 10000. Expect clearance to filed altitude ten minutes after departure.

CHOOK TRANSITION (NASSA2.CHOOK)

VULCAN TRANSITION (NASSA2.VUZ)

YAALL TRANSITION (NASSA2.YAALL)

SE-4, 19 MAR 2026 to 16 APR 2026

SE-4, 19 MAR 2026 to 16 APR 2026