


LOC/DME I-BLI <b>108.5</b> Chan <b>22</b>	APP CRS <b>164°</b>	Rwy Ldg TDZE Apt Elev	<b>6700</b> <b>163</b> <b>171</b>
---	------------------------	-----------------------------	---

# ILS RWY 16 (SA CAT I)

BELLINGHAM INTL (BLI)

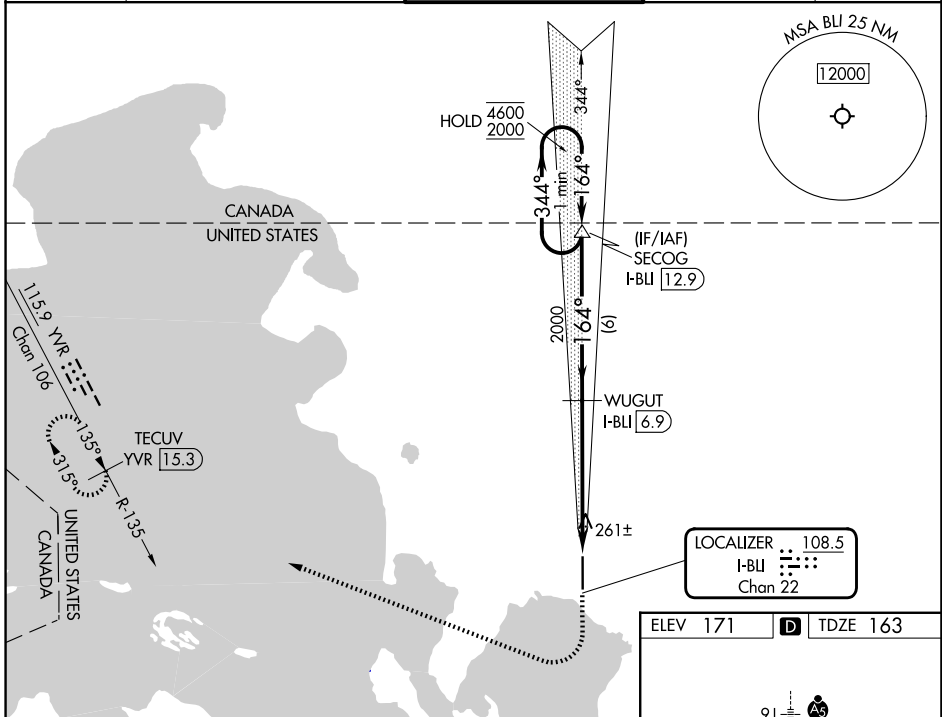
DME required.

**⚠** Requires specific OPSPEC, MSPEC or LOA approval. Procedure NA when tower closed.

MALSR 

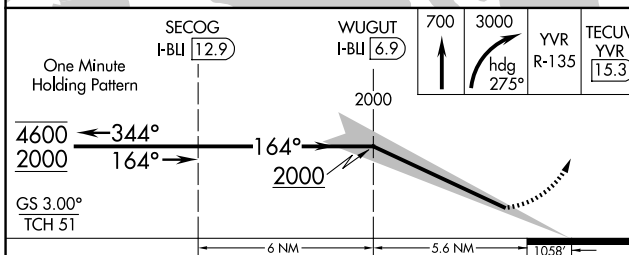
MISSED APPROACH: Climb to 700 then climbing right turn to 3000 on heading 275° and on YVR VOR/DME R-135 to TECUV/YVR 15.3 DME and hold.

ATIS <b>134.45</b>	VICTORIA TERMINAL APP CON <b>132.7</b>	BELLINGHAM TOWER ★ <b>124.9</b> (CTAF) <b>379.3</b>	GND CON <b>127.4 379.3</b>	UNICOM <b>122.95</b>
-----------------------	---	--	-------------------------------	-------------------------

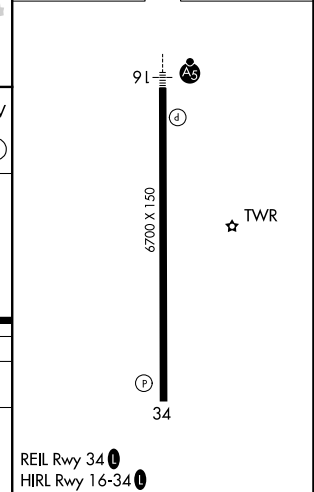


NW-1, 19 MAR 2026 to 16 APR 2026

NW-1, 19 MAR 2026 to 16 APR 2026



ELEV 171	<b>D</b> TDZE 163
----------	-------------------



CATEGORY	A	B	C	D
S-ILS 16	RA 173/14		150 DA 313	

**SA CATEGORY I ILS-SPECIAL AIRCREW & AIRCRAFT CERTIFICATION REQUIRED**

REIL Rwy 34 **⓪**  
HIRL Rwy 16-34 **⓪**