

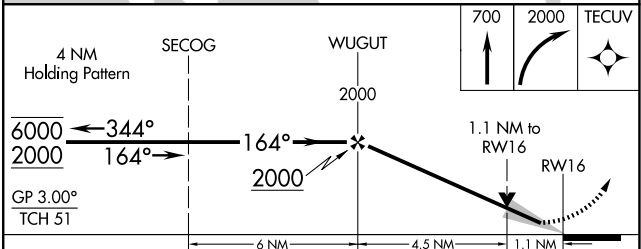
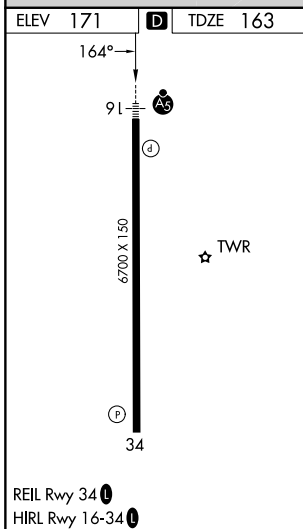
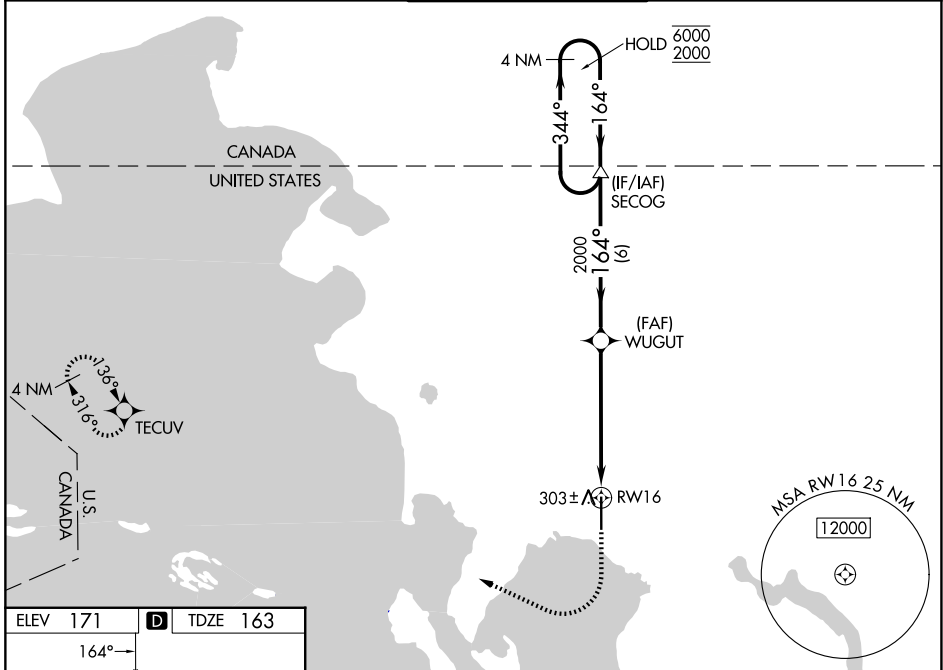
WAAS CH 45999	APP CRS 164°	Rwy Ldg TDZE 163	6700
W16A		Apt Elev 171	

RNAV (GPS) Y RWY 16

BELLINGHAM INTL (BLI)

RNP APCH - GPS.		MALSR	MISSED APPROACH: Climb to 700 then climbing right turn to 2000 direct TECUV and hold.
⚠ For uncompensated Baro-VNAV systems, LNAV/VNAV NA below -10°C or above 54°C. *RVR 1800 authorized with use of FD or AP or HUD to DA.			

ATIS 134.45	VICTORIA TERMINAL APP CON 132.7	BELLINGHAM TOWER★ 124.9 (CTAF) 0 379.3	GND CON 127.4 379.3	UNICOM 122.95
-----------------------	---	--	-------------------------------	-------------------------



CATEGORY	A	B	C	D
LPV DA*	363/24 200 (200-½)			
LNAV/VNAV DA	486/26 323 (400-½)			
LNAV MDA	560/24	397 (400-½)	560/35	397 (400-¾)
CIRCLING	640-1	469 (500-1)	860-2 689 (700-2)	1140-3 969 (1000-3)

NW-1, 19 MAR 2026 to 16 APR 2026

NW-1, 19 MAR 2026 to 16 APR 2026