

APP CRS	Rwy Ldg	3787
202°	TDZE	4152
	Apt Elev	4154

RNAV (GPS) RWY 20

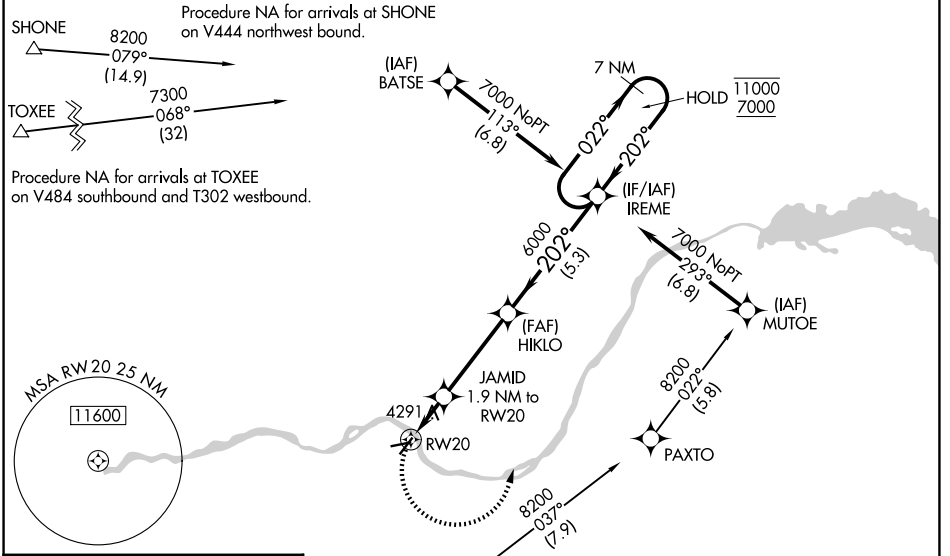
BURLEY MUNI (BYI)

RNP APCH-GPS.

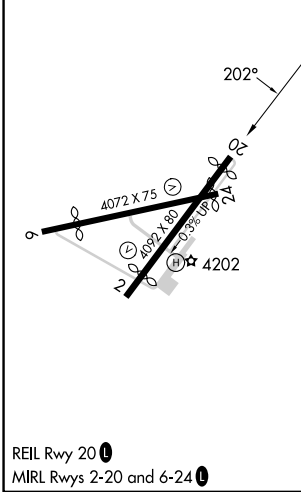
Procedure NA at night. Rwy 20 helicopter visibility reduction below 1 SM NA. When local altimeter setting not received, use TWF altimeter setting and increase all MDAs 80 feet and LNAV visibility Cats C 1/8 SM, and Circling visibility Cat C 1/4 SM. Exhaust stacks located along Rwy 20 extended final approach course approximately 2345 feet from approach end. When Circling Rwy 20, exhaust stacks located along Rwy 20 extended final approach course approximately 2345 feet from approach end.

MISSED APPROACH: Climbing left turn to 7000 direct IREME and hold, continue climb-in-hold to 7000.

ASOS 135.575	TWIN FALLS APP CON * 126.7 353.75	CTAF 122.90
------------------------	---	-----------------------



ELEV 4154	TDZE 4152
-----------	-----------



Visual Segment - Obstacles.

7000	IREME	Visual Segment - Obstacles.
JAMID 1.9 NM to RW20	HIKLO	IREME 7 NM Holding Pattern
RW20	6000	11000 / 7000
4800	6000	
1.9 NM	3.8 NM	5.3 NM

CATEGORY	A	B	C	D
LNAV MDA	4600-1	448 (500-1)	4600-1 3/8 448 (500-1 3/8)	NA
CIRCLING	4640-1 486 (500-1)	4660-1 506 (600-1)	4740-1 1/2 586 (600-1 1/2)	NA

NW-1, 19 MAR 2026 to 16 APR 2026

NW-1, 19 MAR 2026 to 16 APR 2026