

VOR/DME BYI 114.1 Chan 88	APP CRS 100°	Rwy Ldg TDZE Apt Elev 4154	N/A N/A 4154
---	------------------------	---	---

VOR-A

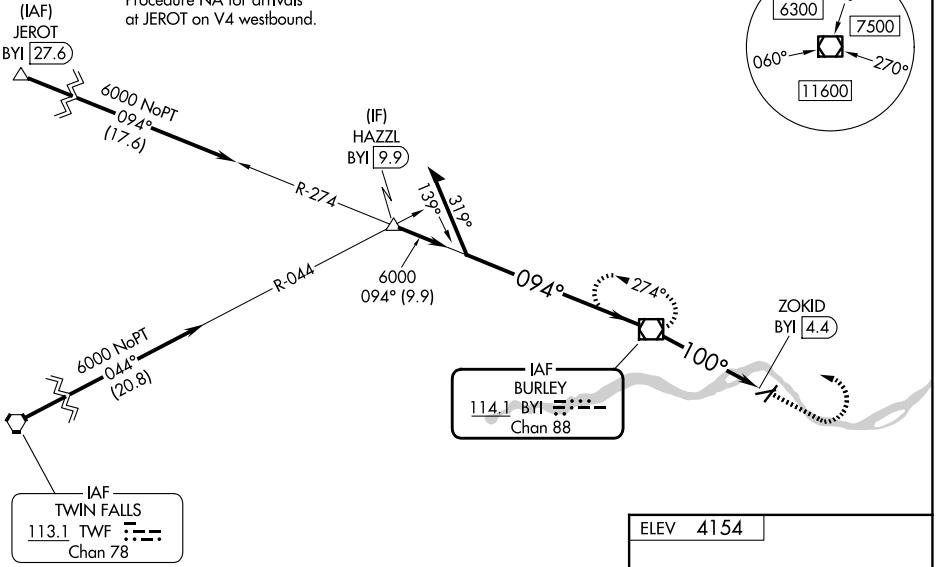
BURLEY MUNI (BYI)

⚠ Circling Rwy 2, 24 NA at night. Rwy 2, 20, 24 helicopter visibility reduction below 1 SM NA. When local altimeter setting not received, use TWF altimeter setting and increase all MDAs 80 feet and visibility Cats C and D ¼ SM. When Circling Rwy 20, exhaust stacks located along Rwy 20 extended final approach course approximately 2345 feet from approach end.

MISSED APPROACH: Climb to 5000 then climbing left turn to 6600 direct BYI VOR/DME and hold, continue climb-in-hold to 6600.

ASOS 135.575	TWIN FALLS APP CON * 126.7 353.75	CTAF 122.90
------------------------	---	-----------------------

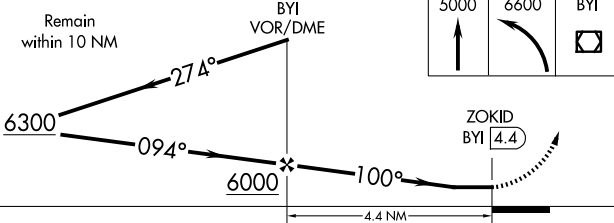
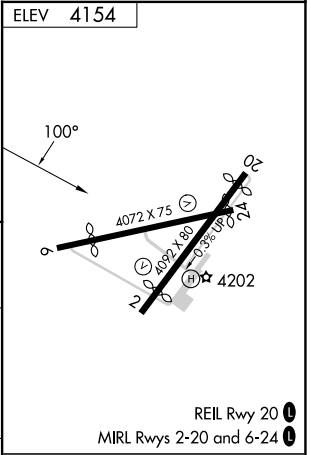
Procedure NA for arrivals at JEROT on V4 westbound.



IAF
TWIN FALLS
113.1 TWF
Chan 78

IAF
BURLEY
114.1 BYI
Chan 88

Procedure NA for arrival on TWF
VORTAC airway radials 349 CW 097.



CATEGORY	A	B	C	D	FAF to MAP 4.4 NM					
	4640-1 486 (500-1)	4660-1 506 (600-1)	4740-1½ 586 (600-1½)	4780-2 626 (700-2)	Knots	60	90	120	150	180
CIRCLING					Min:Sec	4:24	2:56	2:12	1:46	1:28

NW-1, 19 MAR 2026 to 16 APR 2026

NW-1, 19 MAR 2026 to 16 APR 2026