

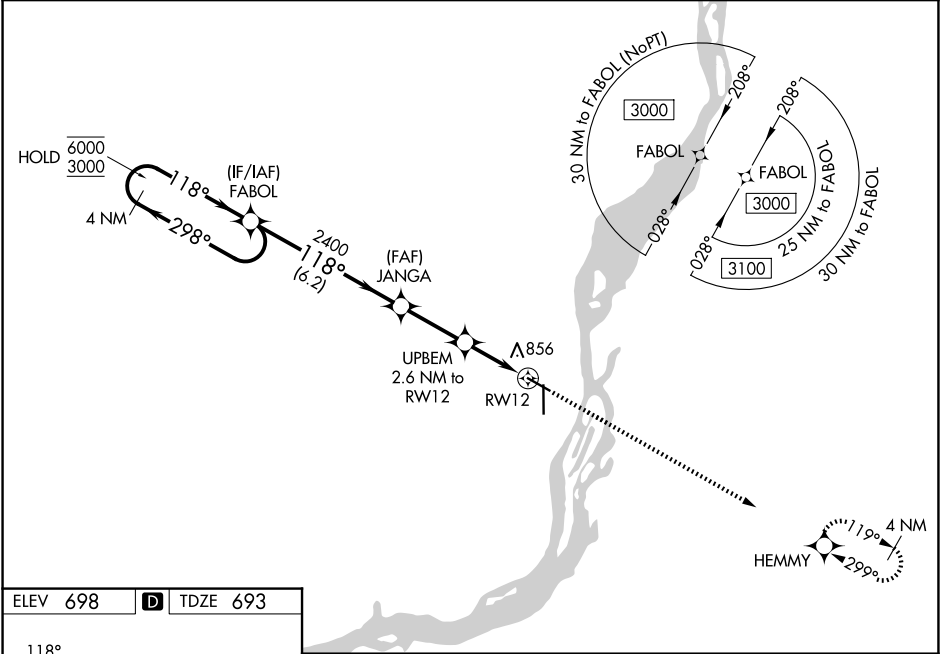
WAAS CH 48834 W12A	APP CRS 118°	Rwy Ldg TDZE Apt Elev	5350 693 698
--	------------------------	-----------------------------	---

RNAV (GPS) RWY 12

SOUTHEAST IOWA RGNL (B.R.L)

RNP APCH.		MISSED APPROACH: Climb to 3000 direct HEMMY and hold.
<p>For uncompensated Baro-VNAV systems, procedure NA below -21°C or above 54°C.</p>		

ASOS 118.025	CHICAGO CENTER 135.6 370.95	UNICOM 123.0 (CTAF) 0
------------------------	---------------------------------------	---------------------------------

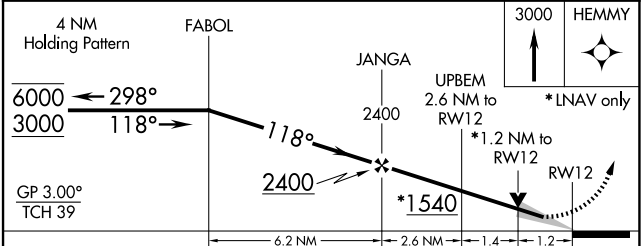


NC-3, 19 MAR 2026 to 16 APR 2026

NC-3, 19 MAR 2026 to 16 APR 2026

ELEV 698 **D** TDZE 693

MIRL Rwy 12-30 **0**
HIRL Rwy 18-36 **0**
REIL Rwy 12, 18 and 30 **0**



CATEGORY	A	B	C	D
LPV DA	943-1 250 (300-1)			NA
LNAV/VNAV DA	1017-1½ 324 (400-1½)			NA
LNAV MDA	1120-1 427 (500-1)	1120-1¼ 427 (500-1¼)		NA
CIRCLING	1180-1 482 (500-1)	1380-2 682 (700-2)		NA