

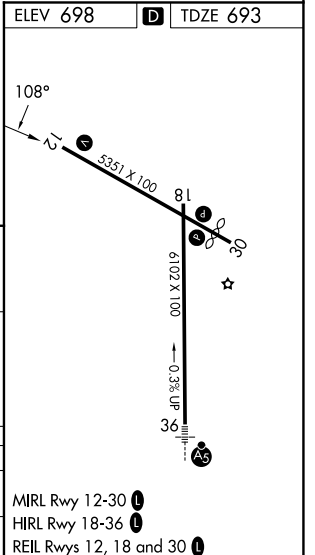
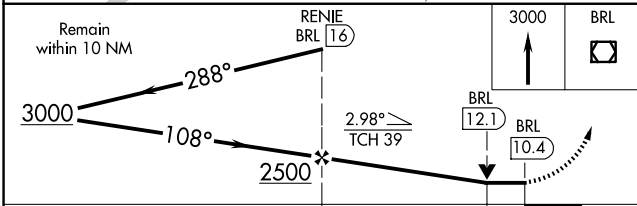
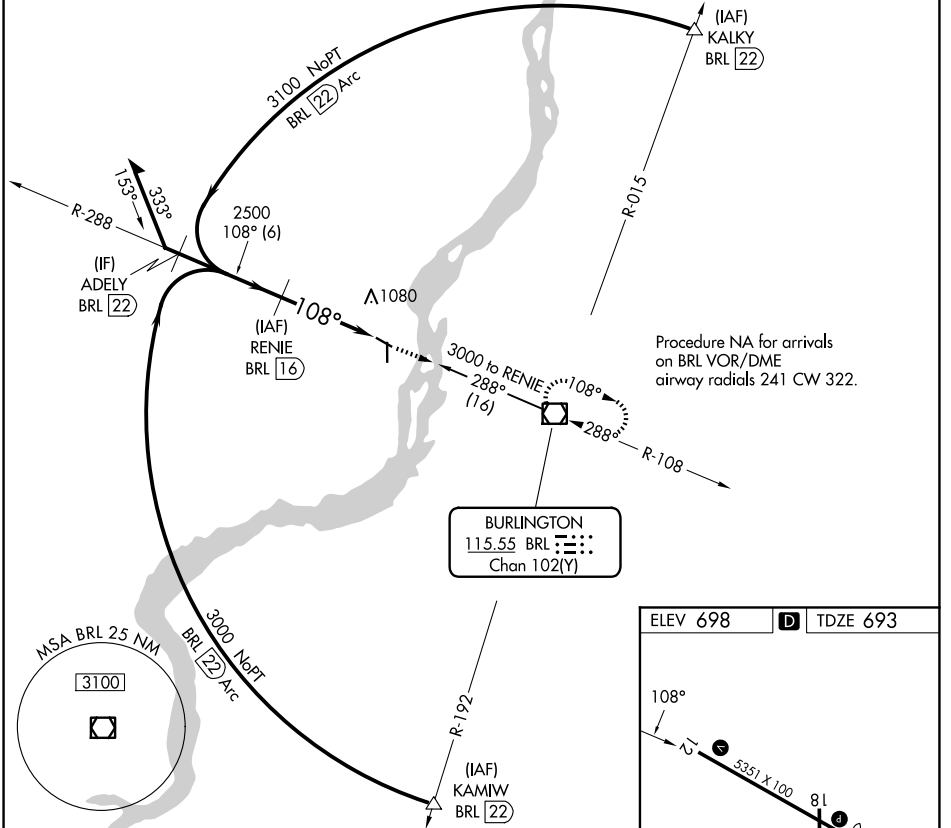
VOR/DME BRL 115.55 Chan 102(Y)	APP CRS 108°	Rwy Ldg TDZE Apt Elev	5350 693 698
--	------------------------	-----------------------------	---

VOR RWY 12

SOUTHEAST IOWA RGNL (B.R.L.)

DME required.		MISSED APPROACH: Climb to 3000 direct BRL VOR/DME and hold.
---------------	--	---

ASOS 118.025	CHICAGO CENTER 135.6 370.95	UNICOM 123.0 (CTAF) 0
------------------------	---------------------------------------	---------------------------------



CATEGORY	A	B	C	D
S-12	1280-1	587 (600-1)	1280-1¼ 587 (600-1¼)	NA
CIRCLING	1280-1	582 (600-1)	1380-2 682 (700-2)	NA

NC-3, 19 MAR 2026 to 16 APR 2026

NC-3, 19 MAR 2026 to 16 APR 2026

- MIRL Rwy 12-30
- HIRL Rwy 18-36
- REIL Rws 12, 18 and 30