

CHANUTE, KANSAS

AL-75 (FAA)

25331

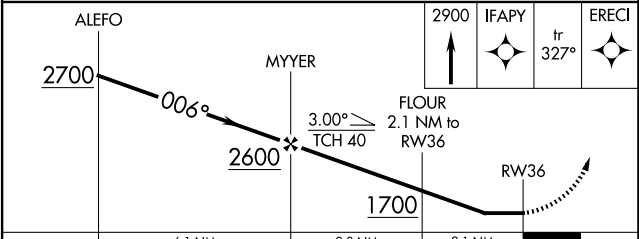
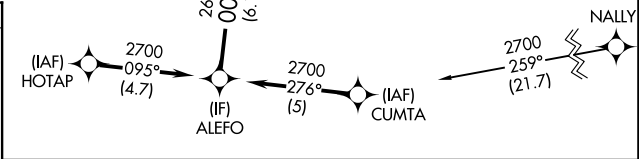
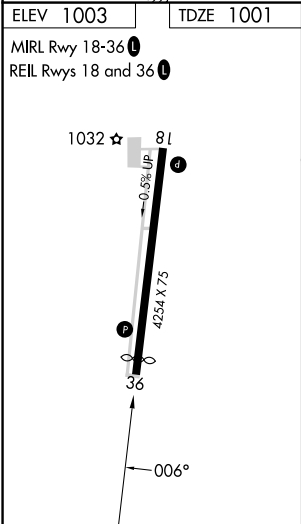
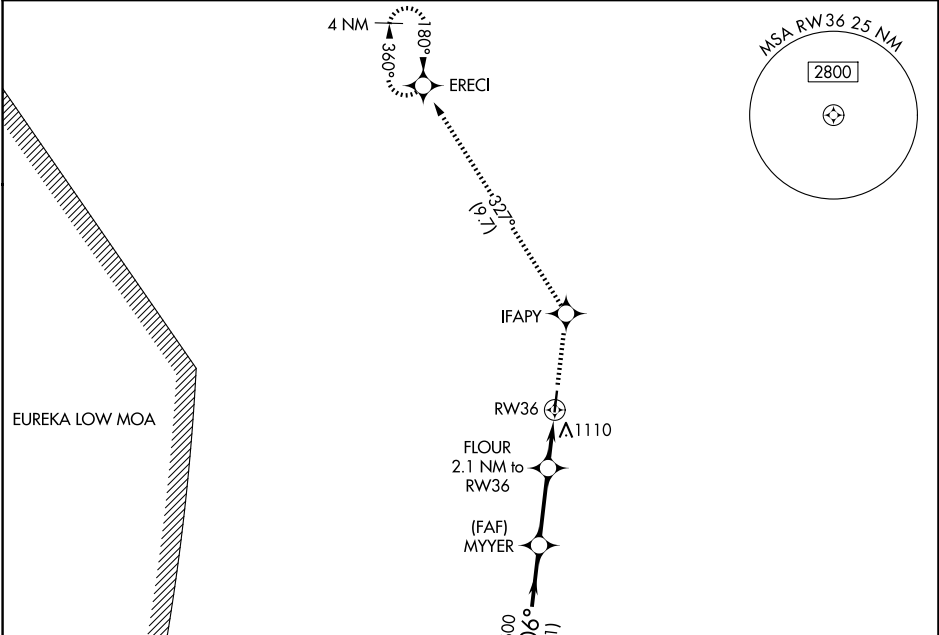
|             |          |             |
|-------------|----------|-------------|
| APP CRS     | Rwy Ldg  | <b>3985</b> |
| <b>006°</b> | TDZE     | <b>1001</b> |
|             | Apt Elev | <b>1003</b> |

# RNAV (GPS) RWY 36

CHANUTE MARTIN JOHNSON (CNU)

|   |  |
|---|--|
| RNP APCH - GPS.   | MISSED APPROACH: Climb to 2900 direct IFAPY and on track 327° to ERECI and hold. |
| Rwy 36 helicopter visibility reduction below 1 SM NA.<br>Procedure NA at night. |  |

|                        |  |                                 |
|------------------------|--|---------------------------------|
| ASOS<br><b>127.075</b> | KANSAS CITY CENTER<br><b>132.9 279.5</b> | UNICOM<br><b>122.7 (CTAF) 0</b> |
|------------------------|--|---------------------------------|



| CATEGORY | A                     | B                     | C  | D |
|----------|-----------------------|-----------------------|----|---|
| LNAV MDA | 1400-1                | 399 (400-1)           | NA |   |
| CIRCLING | 1480-1<br>477 (500-1) | 1620-1<br>617 (700-1) | NA |   |

CHANUTE, KANSAS  
Amdt 1 27NOV25

37°40'N-95°29'W

# CHANUTE MARTIN JOHNSON (CNU)

## RNAV (GPS) RWY 36

NC-2, 19 MAR 2026 to 16 APR 2026

NC-2, 19 MAR 2026 to 16 APR 2026