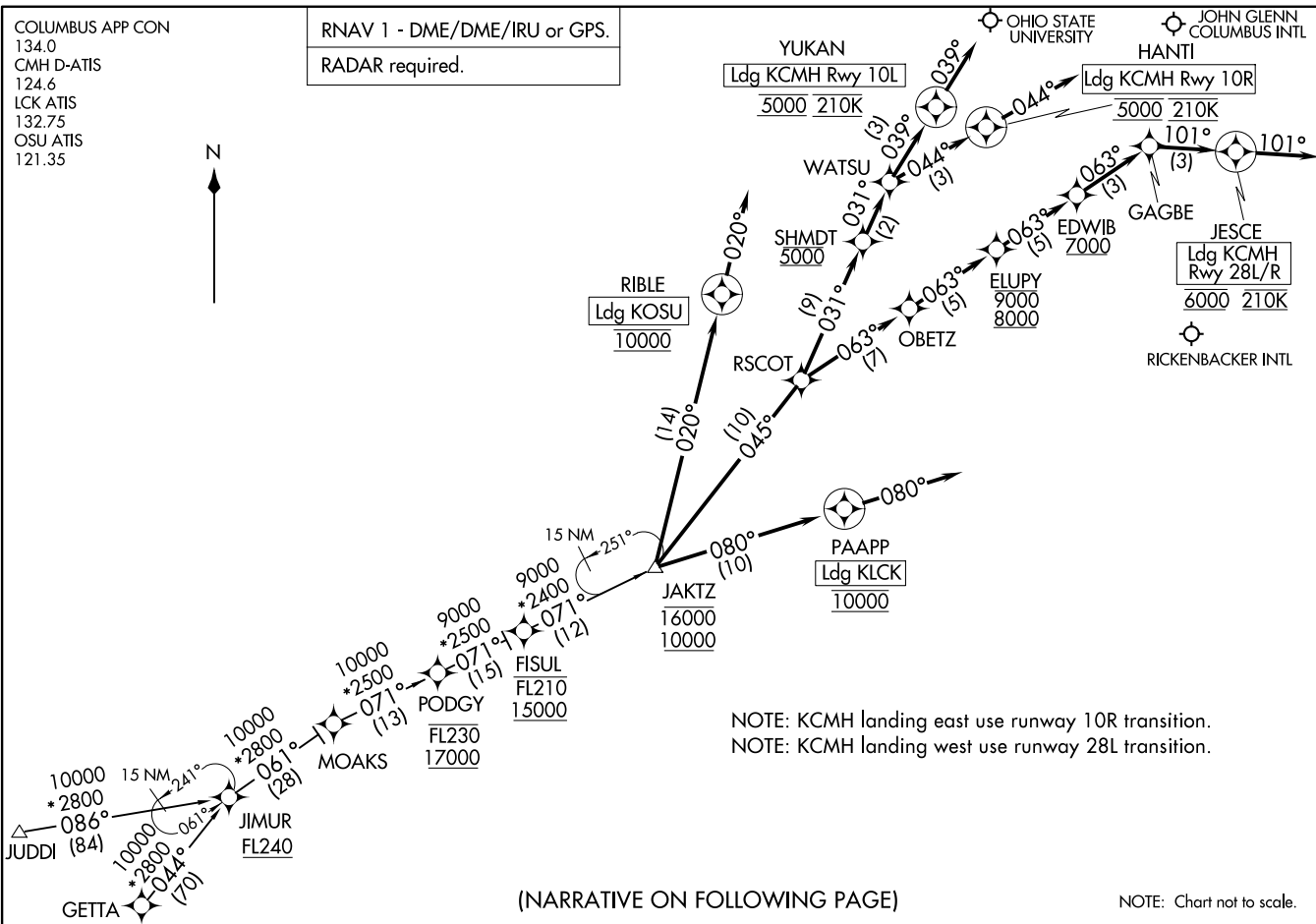


JAKTZ.JAKTZ2) 23FEB23

# JAKTZ TWO ARRIVAL

COLUMBUS APP CON  
 134.0  
 CMH D-ATIS  
 124.6  
 LCK ATIS  
 132.75  
 OSU ATIS  
 121.35

RNAV 1 - DME/DME/IRU or GPS.  
 RADAR required.



NOTE: KCMH landing east use runway 10R transition.  
 NOTE: KCMH landing west use runway 28L transition.

(NARRATIVE ON FOLLOWING PAGE)

NOTE: Chart not to scale.

JAKTZ.JAKTZ2) 25163

AL-94 (FAA)

COLUMBUS, OHIO

ARRIVAL ROUTE DESCRIPTION

GETTA TRANSITION (GETTA.JAKTZ2)

JUDDI TRANSITION (JUDDI.JAKTZ2)

KCMH: From JAKTZ on track 045° to RSCOT.

LANDING KCMH RUNWAY 10L: From RSCOT on track 031° to cross SHMDT at 5000, then on track 031° to WATSU, then on track 039° to cross YUKAN at 5000 and at 210K, then on track 039°. Expect RNAV (RNP) Z Rwy 10L or RADAR vectors to ILS or LOC RWY 10L approach.

LANDING KCMH RUNWAY 10R: From RSCOT on track 031° to cross SHMDT at 5000, then on track 031° to WATSU, then on track 044° to cross HANTI at 5000 and at 210K, then on track 044°. Expect RNAV (RNP) Z Rwy 10R or RADAR vectors to ILS or LOC Rwy 10R approach.

LANDING KCMH RUNWAY 28L/R: From RSCOT on track 063° to OBETZ, then on track 063° to cross ELUPY between 8000 and 9000, then on track 063° to cross EDWIB at or above 7000, then on track 063° to GAGBE, then on track 101° to cross JESCE at 6000 and at 210K, then on track 101°. Expect RADAR vectors to final approach course.

LANDING KLCK: From JAKTZ on track 080° to cross PAAPP at 10000, then on track 080°. Expect RADAR vectors to final approach course.

LANDING KOSU: From JAKTZ on track 020° to cross RIBLE at 10000, then on track 020°. Expect RADAR vectors to final approach course.

EC-2, 19 MAR 2026 to 16 APR 2026

EC-2, 19 MAR 2026 to 16 APR 2026