

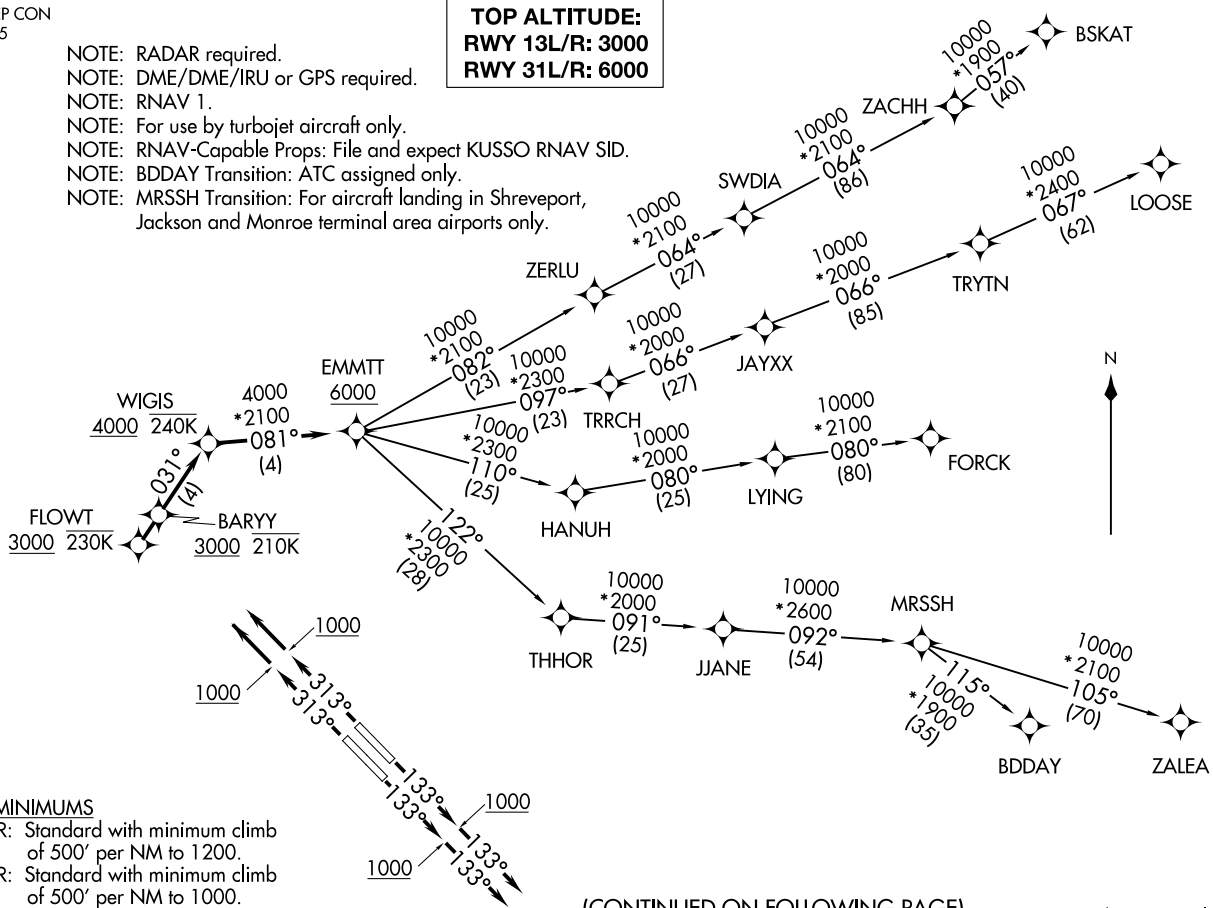
EMMTT FOUR DEPARTURE (RNAV)  
 (EMMTT4,EMMTT) 31MARR16

DALLAS, TEXAS  
 DALLAS LOVE FLD (DAL)

LONE STAR DEP CON  
 118.55 290.35  
 D-ATIS  
 120.15  
 CLNC DEL  
 127.9  
 CPDLC  
 GND CON  
 121.75 348.6  
 LOVE TOWER  
 123.7 239.3

- NOTE: RADAR required.  
 NOTE: DME/DME/IRU or GPS required.  
 NOTE: RNAV 1.  
 NOTE: For use by turbojet aircraft only.  
 NOTE: RNAV-Capable Props: File and expect KUSSO RNAV SID.  
 NOTE: BDDAY Transition: ATC assigned only.  
 NOTE: MRSSH Transition: For aircraft landing in Shreveport, Jackson and Monroe terminal area airports only.

**TOP ALTITUDE:**  
**RWY 13L/R: 3000**  
**RWY 31L/R: 6000**



(CONTINUED ON FOLLOWING PAGE)

NOTE: Chart not to scale.

(EMMTT4,EMMTT) 24305  
 EMMTT FOUR DEPARTURE (RNAV)

AL106 (FAA)

DALLAS LOVE FLD (DAL)  
 DALLAS, TEXAS

# EMMTT FOUR DEPARTURE (RNAV)



## DEPARTURE ROUTE DESCRIPTION

TAKEOFF RUNWAYS 13L/R: Climb heading 133° to 1000, then heading 133° or as assigned by ATC, maintain 3000, thence . . . .

. . . . expect RADAR vectors to cross WIGIS at or above 4000, then on track 081° to cross EMMTT at or above 6000, then on (transition). Expect filed altitude 10 minutes after departure.

TAKEOFF RUNWAY 31L: Climb heading 313° to 1000, then direct to cross FLOWT at or above 3000, then on track 031° to cross WIGIS at or above 4000, thence . . . .

TAKEOFF RUNWAY 31R: Climb heading 313° to 1000, then direct to cross BARYY at or above 3000, then on track 031° to cross WIGIS at or above 4000, thence . . . .

. . . . on track 081° to cross EMMTT at or above 6000, then on (transition). Maintain 6000, expect filed altitude 10 minutes after departure.

BDDAY TRANSITION (EMMTT4.BDDAY)

BSKAT TRANSITION (EMMTT4.BSKAT)

FORCK TRANSITION (EMMTT4.FORCK)

LOOSE TRANSITION (EMMTT4.LOOSE)

MRSSH TRANSITION (EMMTT4.MRSSH)

ZALEA TRANSITION (EMMTT4.ZALEA)

SC-2, 19 MAR 2026 to 16 APR 2026

SC-2, 19 MAR 2026 to 16 APR 2026