

KUSSO TWO DEPARTURE (RNAV)  
(KUSSO2.KUSSO) 22JAN26

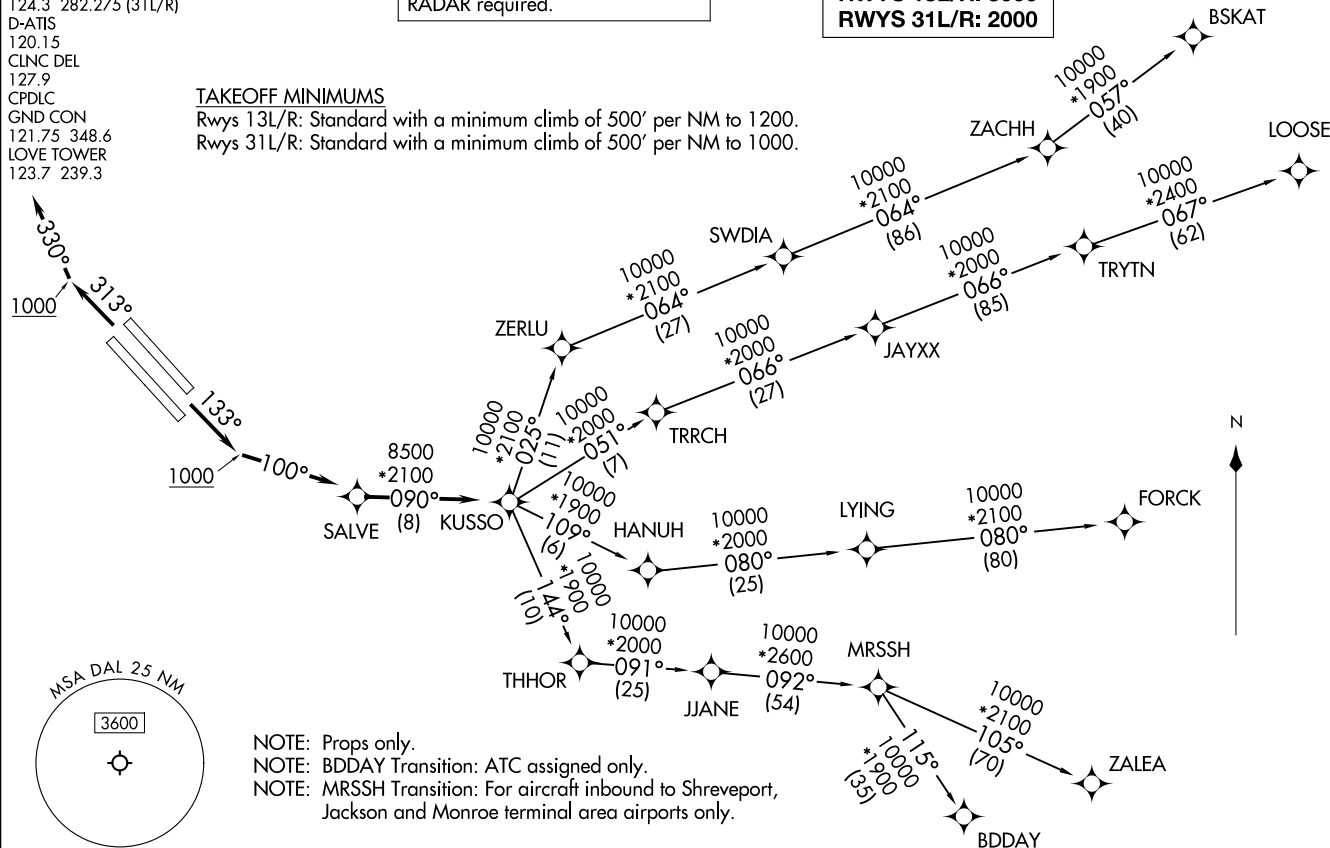
LONE STAR DEP CON  
125.2 343.65 (13L/R)  
124.3 282.275 (31L/R)  
D-ATIS  
120.15  
CLNC DEL  
127.9  
CPDLC  
GND CON  
121.75 348.6  
LOVE TOWER  
123.7 239.3

RNAV 1 - DME/DME/IRU or GPS.  
RADAR required.

**TOP ALTITUDE:**  
**RWYS 13L/R: 3000**  
**RWYS 31L/R: 2000**

TAKEOFF MINIMUMS

Rwys 13L/R: Standard with a minimum climb of 500' per NM to 1200.  
Rwys 31L/R: Standard with a minimum climb of 500' per NM to 1000.

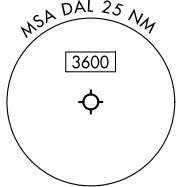


(KUSSO2.KUSSO) 26022  
KUSSO TWO DEPARTURE (RNAV)

AL-106 (FAA)

DALLAS LOVE FLD (DAL)  
DALLAS, TEXAS

DALLAS, TEXAS  
DALLAS LOVE FLD (DAL)



NOTE: Props only.  
NOTE: BDDAY Transition: ATC assigned only.  
NOTE: MRSSH Transition: For aircraft inbound to Shreveport, Jackson and Monroe terminal area airports only.

(CONTINUED ON FOLLOWING PAGE)

NOTE: Chart not to scale.

# KUSSO TWO DEPARTURE (RNAV)



## DEPARTURE ROUTE DESCRIPTION

TAKEOFF RUNWAYS 13L/R: Climb on heading 133° to 1000, thence. . .

. . .left turn heading 100° or as assigned by ATC, expect RADAR vectors to SALVE, then on track 090° to KUSSO, then on (transition). Maintain 3000. Expect filed altitude 10 minutes after departure.

TAKEOFF RUNWAYS 31L/R: Climb on heading 313° to 1000, thence. . .

. . .right turn heading 330° or as assigned by ATC, expect RADAR vectors to SALVE, then on track 090° to KUSSO, then on (transition). Maintain 2000. Expect filed altitude 10 minutes after departure.

- BDDAY TRANSITION (KUSSO2.BDDAY)
- BSKAT TRANSITION (KUSSO2.BSKAT)
- FORCK TRANSITION (KUSSO2.FORCK)
- LOOSE TRANSITION (KUSSO2.LOOSE)
- MRSSH TRANSITION (KUSSO2.MRSSH)
- ZALEA TRANSITION (KUSSO2.ZALEA)

SC-2, 19 MAR 2026 to 16 APR 2026

SC-2, 19 MAR 2026 to 16 APR 2026