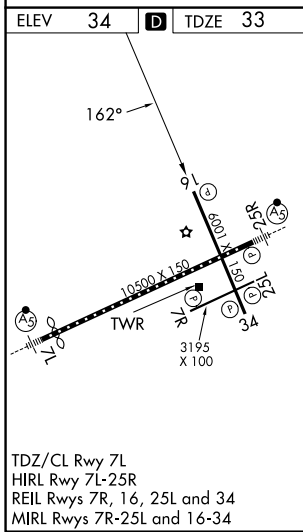
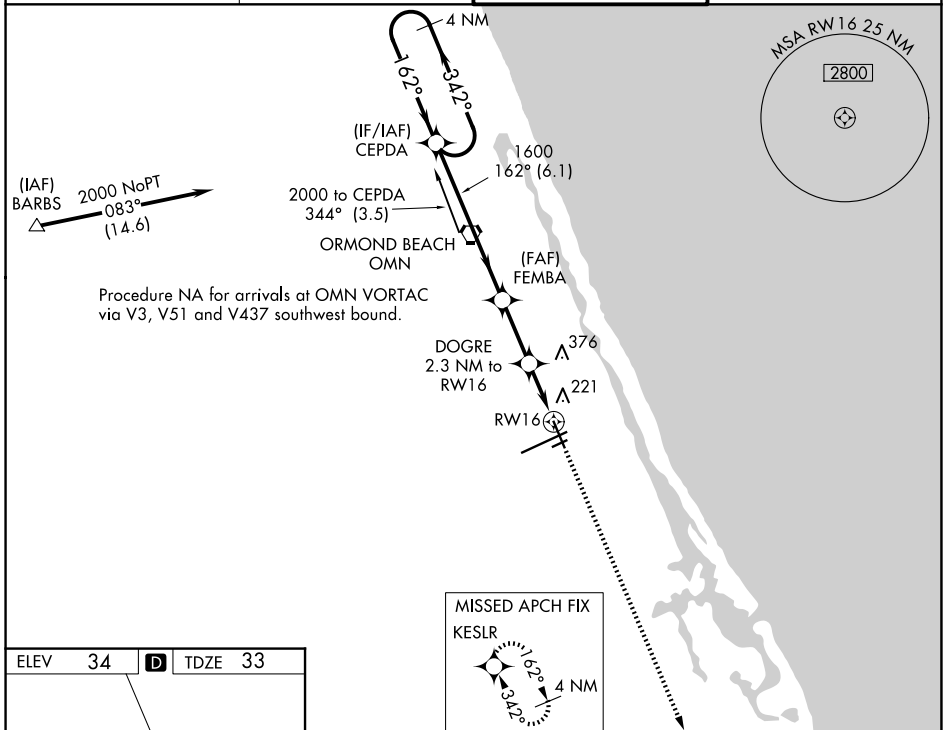


WAAS CH 45529 W16A	APP CRS 162°	Rwy Ldg TDZE Apt Elev	5969 33 34
---------------------------------	------------------------	-----------------------------	---------------------------------------

RNAV (GPS) RWY 16

DAYTONA BEACH INTL (DAB)

<p>Baro-VNAV NA below -15° C (5° F). DME/DME RNP-0.3 NA. Helicopter visibility reduction below 3/4 SM NA.</p>		<p>MISSED APPROACH: Climb to 1700 direct KESLR and hold.</p>	
<p>ATIS 132.875</p>	<p>DAYTONA APP CON 125.8 269.075</p>	<p>DAYTONA TOWER 120.7 257.8</p>	<p>GND CON 121.9 348.6</p>



<p>4 NM Holding Pattern CEPDA</p>		<p>1700 KESLR</p>	
<p>2000 ← 342°</p>		<p>*LNAV only.</p>	
<p>GP 3.00° TCH 45</p>		<p>1600</p>	
<p>162° →</p>		<p>800</p>	
<p>162°</p>		<p>1.3 NM to RW16</p>	
<p>6.1 NM</p>		<p>2.5 NM</p>	
<p>0.9 NM</p>		<p>1.3 NM</p>	
<p>VGSI and RNAV glidepath not coincident (VGSI Angle 3.00/TCH 50).</p>	<p>RW16</p>		
<p>1700 KESLR</p>	<p>*LNAV only.</p>		
<p>4 NM Holding Pattern CEPDA</p>	<p>1600</p>		
<p>2000 ← 342°</p>	<p>800</p>		
<p>162° →</p>	<p>1.3 NM to RW16</p>		
<p>162°</p>	<p>2.5 NM</p>		
<p>6.1 NM</p>	<p>0.9 NM</p>		
<p>0.9 NM</p>	<p>1.3 NM</p>		
<p>1700 KESLR</p>	<p>*LNAV only.</p>		

CATEGORY	A	B	C	D
LPV DA	358-1¼		325 (400-1¼)	
LNAV/VNAV DA	479-1½		446 (500-1½)	
LNAV MDA	500-1	467 (500-1)	500-1¼ 467 (500-1¼)	500-1½ 467 (500-1½)
CIRCLING	540-1½	506 (600-1½)	680-1¾ 646 (700-1¾)	700-2 666 (700-2)

SE-3, 19 MAR 2026 to 16 APR 2026

SE-3, 19 MAR 2026 to 16 APR 2026