

WAAS CH 45500 W07A	APP CRS 070°	Rwy Ldg TDZE Apt Elev	9810 30 34
--	------------------------	-----------------------------	---------------------------------------

RNAV (GPS) RWY 7L

DAYTONA BEACH INTL (DAB)

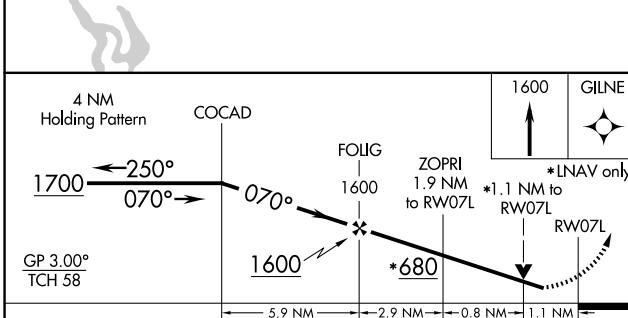
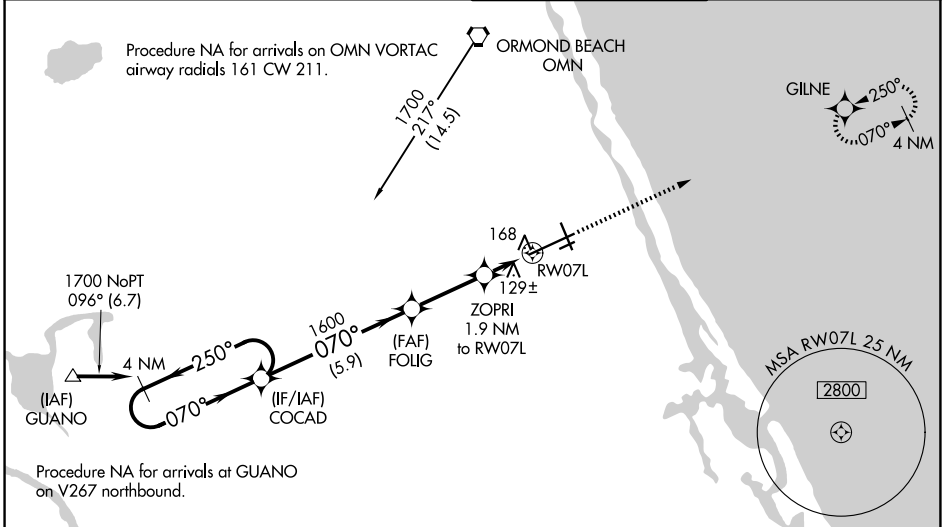
▼

Inoperative table does not apply to LPV all Cats. For uncompensated Baro-VNAV systems, LNAV/VNAV NA below -15°C (5°F) or above 43°C (109°F). DME/DME RNP-0.3 NA. Helicopter visibility reduction below ¾ SM NA. For inoperative MALSR, increase LNAV/VNAV visibility all Cats to 1¼ and increase LNAV Cats A/B visibility to RVR 5000 and Cats C/D visibility to RVR 6000.

MALSR

MISSED APPROACH: Climb to 1600 direct GILNE and hold.

ATIS 132.875	DAYTONA APP CON 125.8 269.075	DAYTONA TOWER 120.7 257.8	GND CON 121.9 348.6
------------------------	---	-------------------------------------	-------------------------------



ELEV 34	D	TDZE 30
---------	----------	---------

91

600

250

150

130

110

34

10500 X 150

TWR

3195 X 100

070°

TDZ/CL Rwy 7L
HIRL Rwy 7L-25R
REIL Rws 7R, 16, 25L, and 34
MIRL Rws 7R-25L and 16-34

CATEGORY	A	B	C	D
LPV DA		230/40	200 (200-¾)	
LNAV/VNAV DA		429/45	399 (400-¾)	
LNAV MDA		420/40	390 (400-¾)	
CIRCLING	540-1	506 (600-1)	680-1¾ 646 (700-1¾)	700-2 666 (700-2)

SE-3, 19 MAR 2026 to 16 APR 2026

SE-3, 19 MAR 2026 to 16 APR 2026