

DES MOINES TWO DEPARTURE

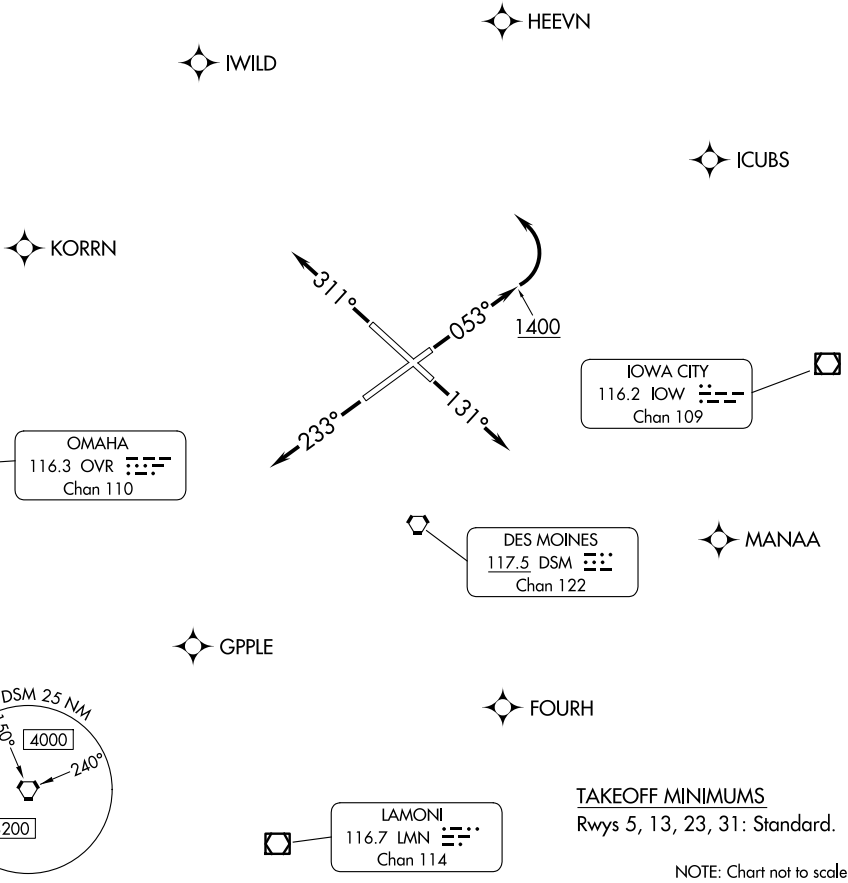
AL-117 (FAA)

DES MOINES INTL (DSM)
DES MOINES, IOWA

**TOP ALTITUDE:
5000**

For waypoints: RNAV 1 - GPS.
RADAR required.

DES MOINES DEP CON
123.9 307.15
CLNC DEL
134.15 317.55



TAKEOFF MINIMUMS
Rwys 5, 13, 23, 31: Standard.

NOTE: Chart not to scale.

DEPARTURE ROUTE DESCRIPTION

TAKEOFF RUNWAY 5: Climb on heading 053° to 1400 before turning left for RADAR vectors to assigned route/fix, thence

TAKEOFF RUNWAY 13: Climb on heading 131° for RADAR vectors to assigned route/fix, thence

TAKEOFF RUNWAY 23: Climb on heading 233° for RADAR vectors to assigned route/fix, thence

TAKEOFF RUNWAY 31: Climb on heading 311° for RADAR vectors to assigned route/fix, thence

. . . . maintain 5000. Expect clearance to filed altitude 10 minutes after departure.

DES MOINES TWO DEPARTURE