

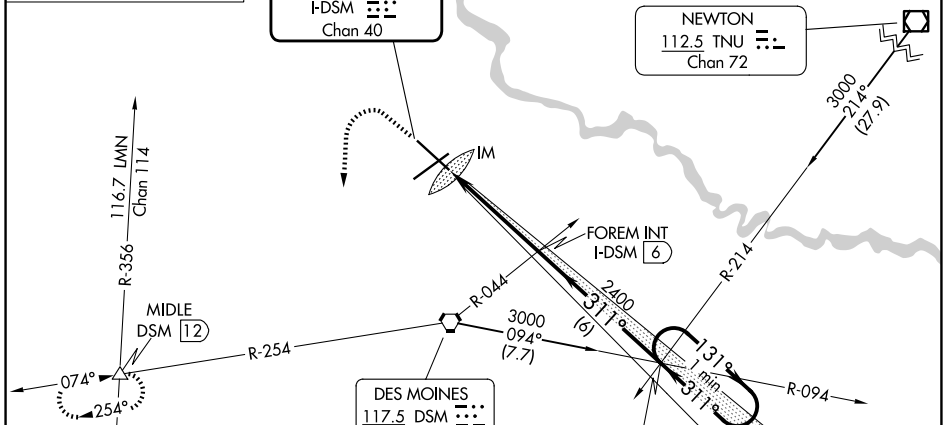
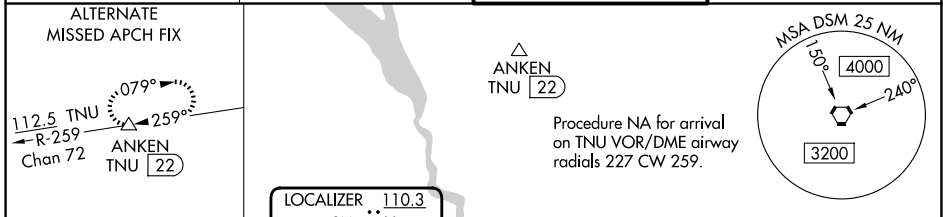
LOC/DME I-DSM <b>110.3</b> Chan <b>40</b>	APP CRS <b>311°</b>	Rwy Ldg TDZE Apt Elev	<b>9001</b> <b>958</b> <b>958</b>
---	------------------------	-----------------------------	---

# ILS RWY 31 (CAT II & III)

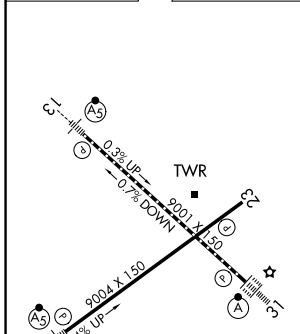
DES MOINES INTL (DSM)

<b>ATIS</b> <b>119.55</b>	<b>DES MOINES APP CON</b> <b>123.9 307.15</b>	<b>DES MOINES TOWER</b> <b>118.3 257.8</b>	<b>GND CON</b> <b>121.9 348.6</b>	<b>ALSIF-2</b> 	<b>MISSED APPROACH:</b> Climb to 1600 then climbing left turn to 3000 on heading 180° and on DSM VORTAC R-254 to MIDDLE INT/12 DME and hold.

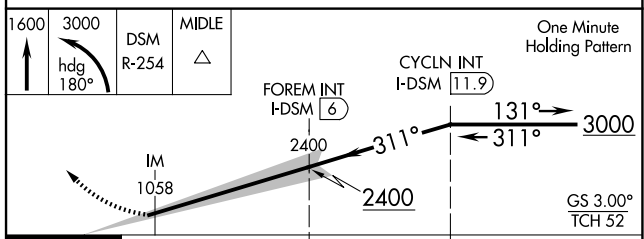
<b>ALTERNATE MISSED APCH FIX</b>		
----------------------------------	--	--



ELEV 958	<b>D</b>	TDZE 958
----------	----------	----------



Procedure NA for arrival on DSM VORTAC airway radials 042 CW 141.



<b>One Minute Holding Pattern</b>	<b>CYCLN INT I-DSM 11.9</b>
<b>FOREM INT I-DSM 6</b>	<b>GS 3.00° TCH 52</b>

<b>REIL Rwy 5 and 23</b> <b>TDZ/CL Rwy 31</b> <b>HIRL Rwy 13-31 and 5-23</b>	<table border="1"> <tr> <td> <b>CATEGORY</b> </td> <td> <b>A</b> </td> <td> <b>B</b> </td> <td> <b>C</b> </td> <td> <b>D</b> </td> </tr> <tr> <td> <b>S-ILS 31</b> </td> <td colspan="2"> <b>CAT II RA 101/12</b> </td> <td colspan="2"> <b>100 DA 1058</b> </td> </tr> <tr> <td> <b>S-ILS 31</b> </td> <td colspan="4"> <b>CAT III RVR 06</b> </td> </tr> </table>	<b>CATEGORY</b>	<b>A</b>	<b>B</b>	<b>C</b>	<b>D</b>	<b>S-ILS 31</b>	<b>CAT II RA 101/12</b>		<b>100 DA 1058</b>		<b>S-ILS 31</b>	<b>CAT III RVR 06</b>			
<b>CATEGORY</b>	<b>A</b>	<b>B</b>	<b>C</b>	<b>D</b>												
<b>S-ILS 31</b>	<b>CAT II RA 101/12</b>		<b>100 DA 1058</b>													
<b>S-ILS 31</b>	<b>CAT III RVR 06</b>															

## CATEGORY II & III ILS - SPECIAL AIRCREW & AIRCRAFT CERTIFICATION REQUIRED

NC-3, 19 MAR 2026 to 16 APR 2026

NC-3, 19 MAR 2026 to 16 APR 2026