

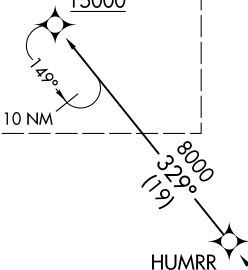
BONZZ TWO ARRIVAL (RNAV) Transition Routes

D-ATIS
133.675
DETROIT APP CON
126.225 284.0

- NOTE: RADAR required.
- NOTE: RNAV 1.
- NOTE: DME/DME/IRU or GPS required.
- NOTE: Use Rwy 21L transition or as assigned by ATC. Expect runway assignment from Detroit APP CON no later than 10 NM from FFORK.
- NOTE: Jet aircraft descend via Mach number until intercepting 280K. Maintain 280K until slowed by the STAR.
- NOTE: For use when DTW landing south. When DTW landing north or west, file and expect the KLYNK RNAV STAR.

See following page for arrival route

BONZZ	
FL210	280K
15000	



HUMRR

8000
327.9°
(21)

EEEZI	
FL270	280K
FL240	



10000
352°
(19)

SSAID

10000
352°
(23)

BOBCT

10000
359°
(51)

JAMOX

10000
304°
(84)

KOZAR

NOTE: Chart not to scale.

JAMOX TRANSITION (JAMOX.BONZZ2)
KOZAR TRANSITION (KOZAR.BONZZ2)

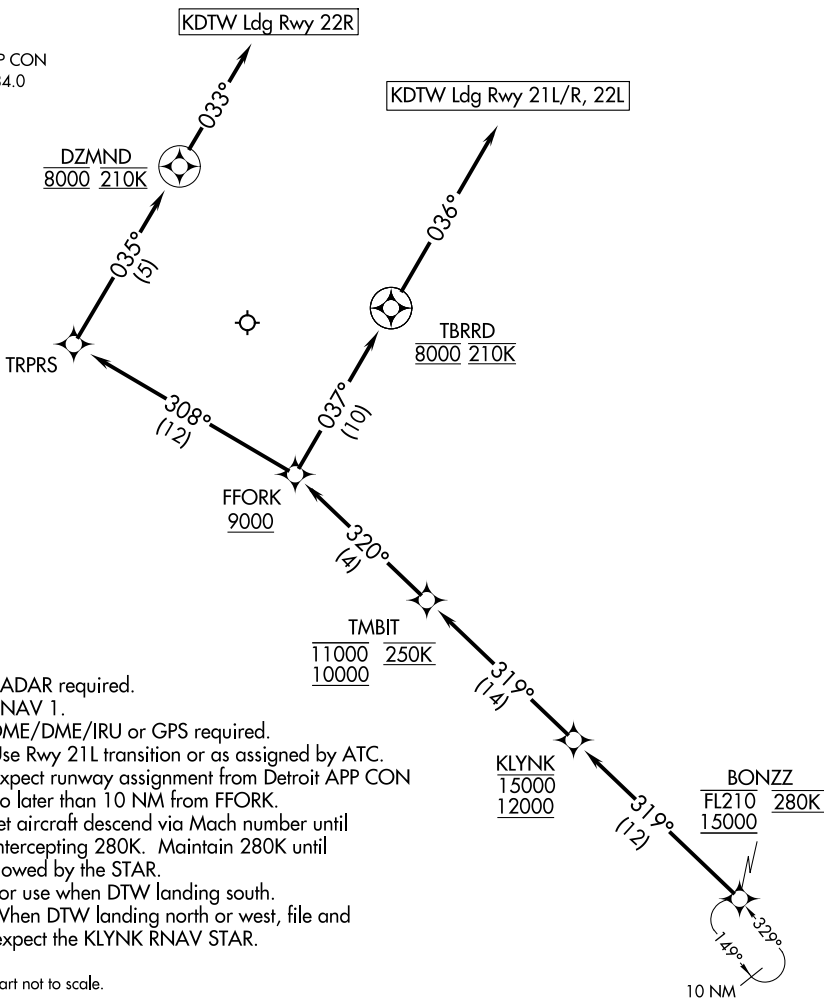
(CONTINUED ON FOLLOWING PAGE)

EC-1, 19 MAR 2026 to 16 APR 2026

EC-1, 19 MAR 2026 to 16 APR 2026

BONZZ TWO ARRIVAL (RNAV) Arrival Routes

D-ATIS
133.675
DETROIT APP CON
126.225 284.0



- NOTE: RADAR required.
- NOTE: RNAV 1.
- NOTE: DME/DME/IRU or GPS required.
- NOTE: Use Rwy 21L transition or as assigned by ATC. Expect runway assignment from Detroit APP CON no later than 10 NM from FFORK.
- NOTE: Jet aircraft descend via Mach number until intercepting 280K. Maintain 280K until slowed by the STAR.
- NOTE: For use when DTW landing south. When DTW landing north or west, file and expect the KLYNK RNAV STAR.

NOTE: Chart not to scale.

ARRIVAL ROUTE DESCRIPTION

From BONZZ on track 319° to cross KLYNK between 12000 and 15000, then on track 319° to cross TMBIT between 10000 and 11000 and at 250K, then on track 320° to cross FFORK at or above 9000.

LANDING RWYS 22L, 21L/R: From FFORK on track 037° to cross TBRRD at 8000 and at 210K, then on track 036°. Expect RADAR vectors to final approach course.

LANDING RWY 22R: From FFORK on track 308° to TRPRS, then on track 035° to cross DZMND at 8000 and at 210K, then on track 033°. Expect RADAR vectors to final approach course.