

# ILS PRM RWY 4R (CLOSE PARALLEL)

DETROIT METRO WAYNE COUNTY (DTW)

LOC/DME I-DTW <b>110.7</b>	APP CRS <b>036°</b>	Rwy Ldg <b>11494</b>
Chan <b>44</b>		TDZE <b>640</b>
		Apt Elev <b>645</b>

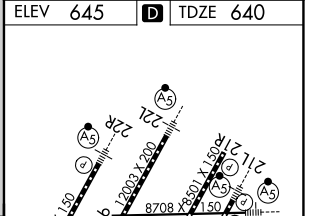
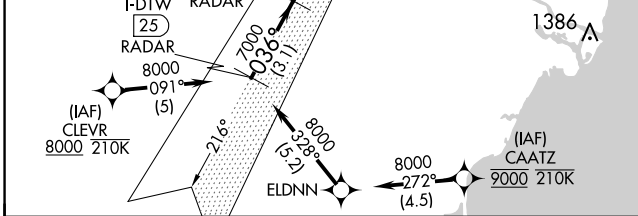
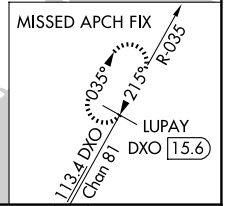
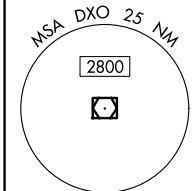
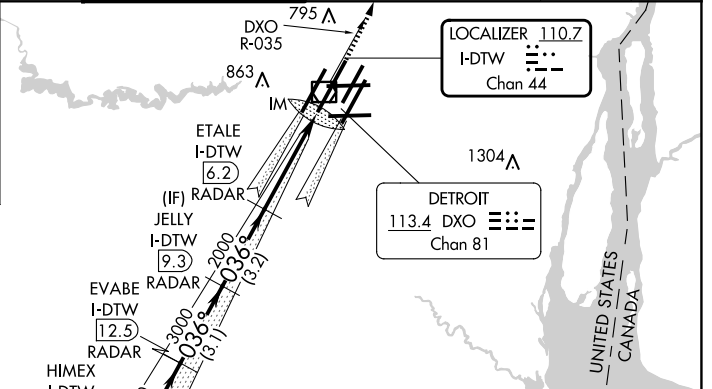
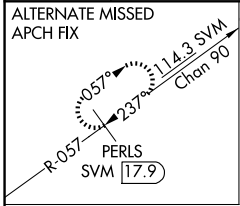
RNAV 1-GPS.  
DME or RADAR required. CLEVR, CAATZ and ELDNN: RNAV 1-DME/DME/IRU or GPS required. Aircraft not DME/DME/IRU or GPS equipped- RADAR required for procedure entry.

▼ Simultaneous approach authorized. Use of FD or AP required during simultaneous operations. Dual VHF Comm required. See additional requirements on AAUP. Procedure NA when glideslope not available.

ALSF-2

MISSED APPROACH:  
Climb to 4000 on DXO  
VOR/DME R-035 to  
LUPAY/DXO VOR/DME  
15.6 DME and hold.

D-ATIS <b>133.675</b>	DETROIT APP CON <b>124.05 284.0</b>	METRO TOWER <b>128.125 317.725 PRM 135.775</b>	GND CON <b>121.8 (NW) 119.45 (NE) 132.725 (SW) 119.25 (SE)</b>	CLNC DEL <b>120.65</b>	CPDLC
--------------------------	--	---	---	---------------------------	-------



BAANG I-DTW 25 RADAR	JULEP I-DTW 21.9 RADAR	CULOP I-DTW 18.8 RADAR	HIMEX I-DTW 15.6 RADAR	EVABE I-DTW 12.5 RADAR	JELLY I-DTW 9.3 RADAR	ETALE I-DTW 6.2 RADAR	DXO R-035	LUPAY DXO 15.6
8000	7000	6000	5000	4000	3000	2000	4000	4000
3.1 NM	3.1 NM	3.1 NM	3.1 NM	3.1 NM	3.2 NM	4 NM	0.1 NM	
GS 3.00° TCH 52								
CATEGORY	A		B		C		D	
S-ILS 4R	840/18		200 (200-1/2)					

TDZ/CL Rwy 3R, 4L, 4R and 22R  
REIL Rwy 3L, 9L, 9R and 21R  
HIRL all runways

# ILS PRM RWY 4R (CLOSE PARALLEL)

EC-1, 19 MAR 2026 to 16 APR 2026

EC-1, 19 MAR 2026 to 16 APR 2026