

(CLOSE PARALLEL)

DETROIT METRO WAYNE COUNTY (DTW)

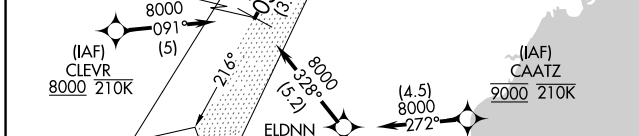
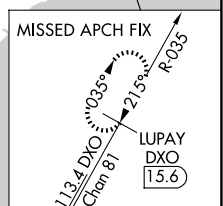
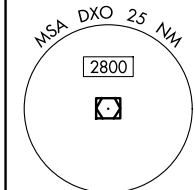
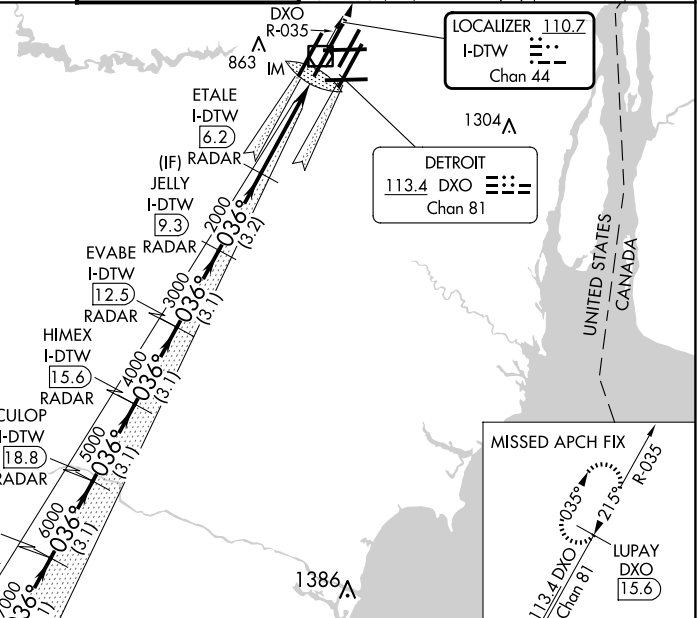
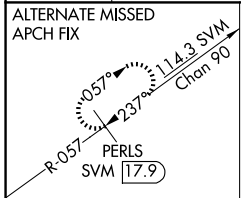
LOC/DME I-DTW 110.7 Chan 44	APP CRS 036°	Rwy Ldg TDZE Apt Elev	11494 640 645
---	------------------------	-----------------------------	--

RNAV 1-GPS, DME or RADAR required. CLEVR, CAATZ and ELDNN: RNAV 1-DME/DME/IRU or GPS required. Aircraft not DME/DME/IRU or GPS equipped- RADAR required for procedure entry.

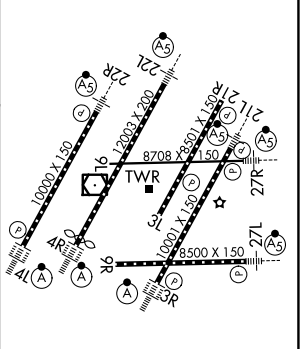
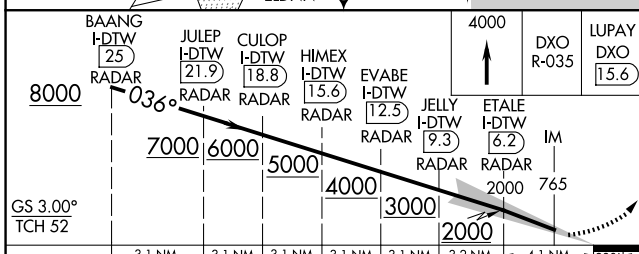
ALSF-2 MISSED APPROACH:
Climb to 4000 on DXO
VOR/DME R-035 to
LUPAY/DXO VOR/DME
15.6 DME and hold.

Simultaneous approach authorized. Use of FD or AP required during simultaneous operations. Dual VHF Comm required. See additional requirements on AAPP. Procedure NA when glideslope not available.

D-ATIS 133.675	DETROIT APP CON 124.05 284.0	METRO TOWER 128.125 317.725 PRM 135.775	GND CON 121.8 (NW) 119.45 (NE) 132.725 (SW) 119.25 (SE)	CLNC DEL 120.65	CPDLC
--------------------------	--	---	---	---------------------------	-------



ELEV 645	TDZE 640
----------	----------



GS 3.00° TCH 52	3.1 NM	3.1 NM	3.1 NM	3.1 NM	3.1 NM	3.2 NM	4.1 NM	980'
CATEGORY	A	B	C	D				
S-ILS 4R	CAT II RA 104/12			100 DA 740				
S-ILS 4R	CAT III			RVR 06				

TDZ/CL Rws 3R, 4L, 4R and 22R
REIL Rws 3L, 9L, 9R and 21R
HIRL all runways

CATEGORY II & III ILS - SPECIAL AIRCREW & AIRCRAFT CERTIFICATION REQUIRED

EC-1, 19 MAR 2026 to 16 APR 2026

EC-1, 19 MAR 2026 to 16 APR 2026