

DETROIT, MICHIGAN

AL-119 (FAA)


ILS PRM RWY 4R (SA CAT I) (CLOSE PARALLEL)

25163

LOC/DME I-DTW 110.7 Chan 44	APP CRS 036°	Rwy Ldg 11494	TDZE 640	Apt Elev 645
---	------------------------	-------------------------	--------------------	------------------------

DETROIT METRO WAYNE COUNTY (DTW)

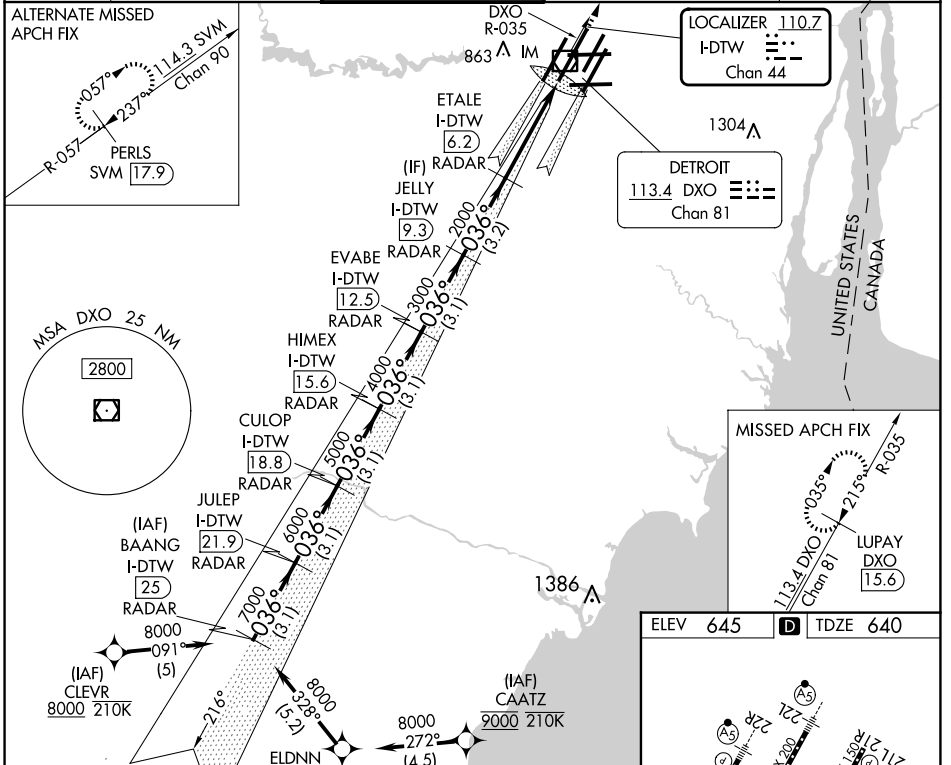
RNAV 1-GPS. DME or RADAR required. CLEVR, CAATZ and ELDNN: RNAV 1-DME/DME/IRU or GPS required. Aircraft not DME/DME/IRU or GPS equipped- RADAR required for procedure entry.

ALSIF-2 

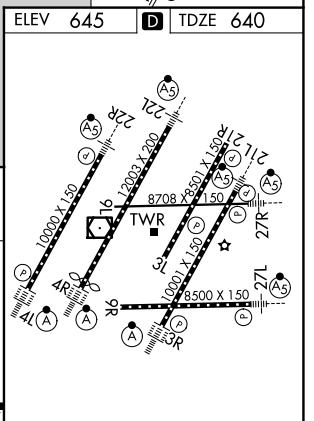
MISSED APPROACH: Climb to 4000 on DXO VOR/DME R-035 to LUPAY/DXO VOR/DME 15.6 DME and hold.

Simultaneous approach authorized. Use of FD or AP required during simultaneous operations. Dual VHF Comm required. See additional requirements on AAUP. Procedure NA when glideslope not available. Requires specific OPSPEC, MSPEC, or LOA approval and use of HUD to DH.

D-ATIS 133.675	DETROIT APP CON 124.05 284.0	METRO TOWER 128.125 317.725 PRM 135.775	GND CON 121.8 (NW) 119.45 (NE) 132.725 (SW) 119.25 (SE)	CLNC DEL 120.65	CPDLC
--------------------------	--	---	---	---------------------------	-------



BAANG I-DTW 25 RADAR	JULEP I-DTW 21.9 RADAR	CULOP I-DTW 18.8 RADAR	HIMEX I-DTW 15.6 RADAR	EVABE I-DTW 12.3 RADAR	JELLY I-DTW 9.3 RADAR	ETALE I-DTW 6.2 RADAR	IM
8000 036° 15.2	7000 036° 13.1	6000 036° 11.0	5000 036° 8.9	4000 036° 6.8	3000 036° 4.7	2000 036° 2.6	
GS 3.00° TCH 52	3.1 NM	3.1 NM	3.1 NM	3.1 NM	3.1 NM	3.2 NM	4.1 NM



SA CATEGORY I ILS - SPECIAL AIRCREW & AIRCRAFT CERTIFICATION REQUIRED

BAANG I-DTW 25 RADAR

JULEP I-DTW 21.9 RADAR

CULOP I-DTW 18.8 RADAR

HIMEX I-DTW 15.6 RADAR

EVABE I-DTW 12.3 RADAR

JELLY I-DTW 9.3 RADAR

ETALE I-DTW 6.2 RADAR

IM

3.1 NM 3.1 NM 3.1 NM 3.1 NM 3.1 NM 3.2 NM 4.1 NM

CATEGORY A B C D

S-ILS 4R RA 154/14 150 DA 790

TDZ/CL Rwy 3R, 4L, 4R and 22R
REIL Rwy 3L, 9L, 9R and 21R
HIRL all runways

DETROIT, MICHIGAN
Amdt 3A 13SEP18

42°13'N-83°21'W

DETROIT METRO WAYNE COUNTY (DTW)

ILS PRM RWY 4R (SA CAT I) (CLOSE PARALLEL)

EC-1, 19 MAR 2026 to 16 APR 2026

EC-1, 19 MAR 2026 to 16 APR 2026