

DETROIT, MICHIGAN

AL-119 (FAA)

25163

LOC/DME I-JKI 111.95	APP CRS 216°	Rwy Ldg TDZE Apt Elev	10000 642 645
Chan 56 (Y)			

ILS PRM Z RWY 22R (SA CAT I & II) (CLOSE PARALLEL)

DETROIT METRO WAYNE COUNTY (DTW)

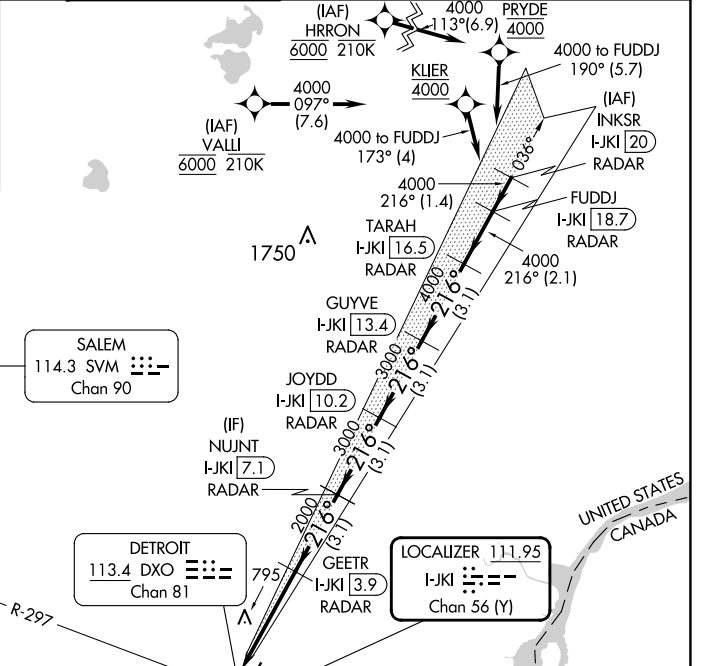
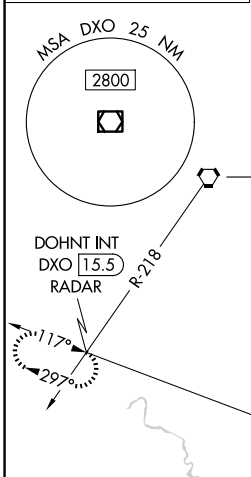
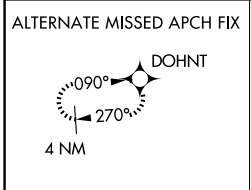
RNAV 1-GPS, HRRON and VALLI: RNAV 1-DME/DME/IRU or GPS required.
 Aircraft not DME/DME/IRU or GPS equipped - RADAR required for procedure entry.

Simultaneous approach authorized. Use of FD or AP required during simultaneous operations. Dual VHF Comm required. See additional requirements on AAUP.
 SA CAT I: Requires specific OPSPEC, MSPEC, or LOA approval and use of HUD to DH.
 SA CAT II: Reduced lighting: Requires specific OPSPEC, MSPEC, or LOA approval and use of autoland or HUD to touchdown.

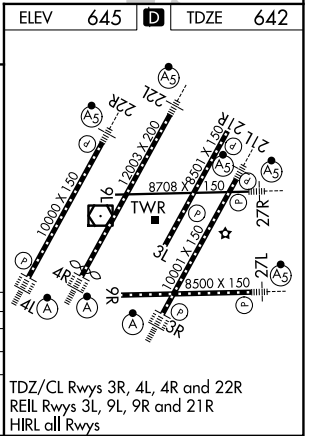
MALSR

MISSED APPROACH: Climb to 1100 then climbing right turn to 4000 on DXO VOR/DME R-297 to DOHNT INT/DXO 15.5 DME/RADAR and hold.

D-ATIS 133.675	DETROIT APP CON 124.05 284.0	METRO TOWER 135.0 317.25 PRM 127.05	GND CON 121.8 (NW) 119.45 (NE) 132.725 (SW) 119.25 (SE)	CLNC DEL 120.65	CPDLC
--------------------------	--	---	---	---------------------------	-------



ELEV 1100	4000	DXO R-297	DOHNT INT	VGS1 and ILS glidepath not coincident (VGS1 Angle 3.00/TCH 71).			
I-JKI DME ANTENNA	GEETR I-JKI 3.9 RADAR	NUJNT I-JKI 7.1 RADAR	JOYDD I-JKI 10.2 RADAR	GUYVE I-JKI 13.4 RADAR	TARAH I-JKI 16.5 RADAR	FUDDJ I-JKI 18.7 RADAR	216° 4000
2000	3000	3000	4000	4000	4000	4000	GS 3.00° TCH 55
4.1 NM	3.1 NM	3.1 NM	3.1 NM	3.1 NM	2.1 NM		
CATEGORY	A	B	C	D			
S-ILS 22R	SA CAT I RA 148/14 150 DA 792						
S-ILS 22R	SA CAT II RA 98/12 100 DA 742						



DETROIT, MICHIGAN 42°13'N-83°21'W DETROIT METRO WAYNE COUNTY (DTW)

Orig-B 30JAN20

ILS PRM Z RWY 22R (SA CAT I & II) (CLOSE PARALLEL)

EC-1, 19 MAR 2026 to 16 APR 2026

EC-1, 19 MAR 2026 to 16 APR 2026

TDZ/CL Rwy 3R, 4L, 4R and 22R
 REIL Rwy 3L, 9L, 9R and 21R
 HIRL all Rwy's