

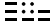
RADAR required. DME required.

**TOP ALTITUDE:
ASSIGNED BY ATC**

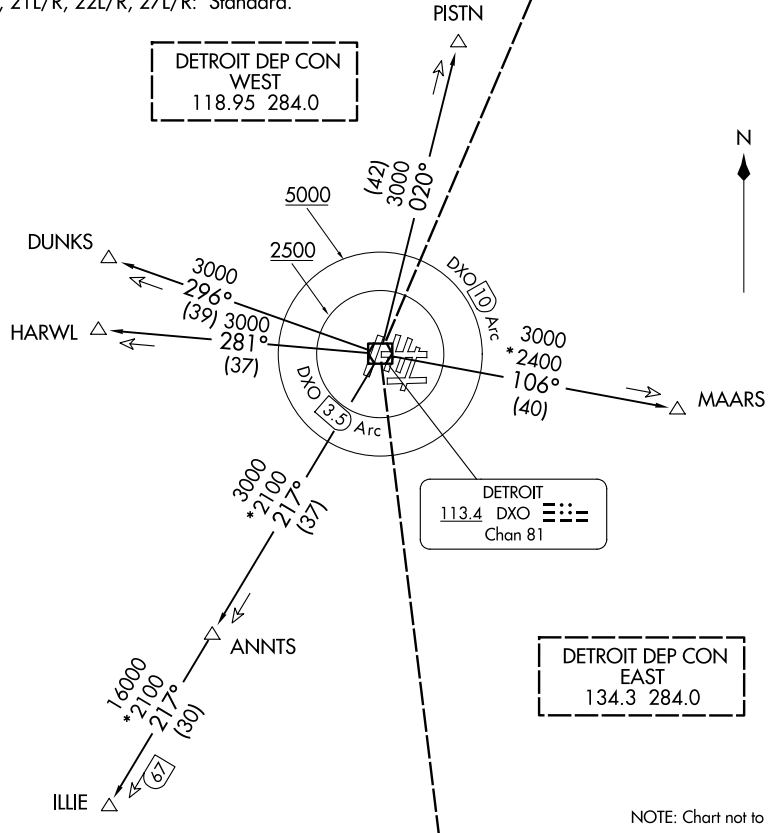
TAKEOFF MINIMUMS

Rwys 3L/R, 4L/R, 9L/R, 21L/R, 22L/R, 27L/R: Standard.

DETROIT DEP CON
WEST
118.95 284.0

DETROIT
113.4 DXO 
Chan 81

DETROIT DEP CON
EAST
134.3 284.0

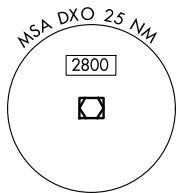


D-ATIS 118.125
CLNC DEL 120.65
CPDLC
GND CON
121.8 (NW) 119.45 (NE)
132.725 (SW) 119.25 (SE)
METRO TOWER
118.4 317.725 (Rwys 3L/R, 21L/R, 27R)
128.75 317.725 (Rwy 27L)
135.0 317.725 (Rwy 4L/R, 22L/R)

NOTE: For use by non-RNAV equipped aircraft only.
NOTE: When using this departure, file the appropriate depicted departure fix and route. Aircraft over HARWL must file FL220 and below. Aircraft landing Cleveland (CLE) must file MAARS transition. Turbojet departures at/above 10000, maintain 280K until advised by ATC. If unable, advise ATC prior to departure.

SPECIAL INSTRUCTIONS:

For appropriate departure control frequency, see graphic. Use frequency depicted within the sector where first navaid/fix for your route is located (sectors indicated by dashed lines; frequencies in dashed box within).



(CONTINUED ON FOLLOWING PAGE)

NOTE: Chart not to scale.

METRO FOUR DEPARTURE
(METRO4.DXO) 05SEP24

DETROIT, MICHIGAN
DETROIT METRO WAYNE COUNTY (DTW)

METRO FOUR DEPARTURE
(METRO4.DXO) 24249

AL-119 (FAA)

DETROIT METRO WAYNE COUNTY (DTW)
DETROIT, MICHIGAN

METRO FOUR DEPARTURE

AL-119 (FAA)

DETROIT, MICHIGAN



DEPARTURE ROUTE DESCRIPTION

TAKEOFF ALL RUNWAYS: Climb on assigned heading. Maintain ATC assigned altitude for RADAR vectors to intercept filed/assigned transition or enroute fix/navaid. When ATC assigned altitude is at or above 5000, cross DXO 10 DME Arc at or above 5000 for noise abatement. If unable to comply, advise ATC prior to departure. Expect clearance to filed altitude/flight level within ten (10) minutes after departure.

ALL AIRCRAFT: ATC climb gradient: If unable to accept climb rate, advise ATC prior to taxi.

RUNWAY 3L: Cross DXO 3.5 DME at or above 2500 MSL, 737'/NM to 2500.

RUNWAY 3R: Cross DXO 3.5 DME at or above 2500 MSL, 820'/NM to 2500.

RUNWAY 4L: Cross DXO 3.5 DME at or above 2500 MSL, 669'/NM to 2500.

RUNWAY 4R: Cross DXO 3.5 DME at or above 2500 MSL, 856'/NM to 2500.

RUNWAY 9L: Cross DXO 3.5 DME at or above 2500 MSL, 988'/NM to 2500.

RUNWAY 9R: Cross DXO 3.5 DME at or above 2500 MSL, 1046'/NM to 2500.

RUNWAY 21L: Cross DXO 3.5 DME at or above 2500 MSL, 687'/NM to 2500.

RUNWAY 21R: Cross DXO 3.5 DME at or above 2500 MSL, 538'/NM to 2500.

RUNWAY 22L: Cross DXO 3.5 DME at or above 2500 MSL, 661'/NM to 2500.

RUNWAY 22R: Cross DXO 3.5 DME at or above 2500 MSL, 742'/NM to 2500.

RUNWAY 27L: Cross DXO 3.5 DME at or above 2500 MSL, 521'/NM to 2500.

RUNWAY 27R: Cross DXO 3.5 DME at or above 2500 MSL, 511'/NM to 2500.

DUNKS TRANSITION (METRO4.DUNKS): From over DXO VOR/DME on DXO R-296 to DUNKS.

HARWL TRANSITION (METRO4.HARWL): From over DXO VOR/DME on DXO R-281 to HARWL.

ILLIE TRANSITION (METRO4.ILLIE): From over DXO VOR/DME on DXO R-217 to ILLIE.

MAARS TRANSITION (METRO4.MAARS): From over DXO VOR/DME on DXO R-106 to MAARS.

PISTN TRANSITION (METRO4.PISTN): From over DXO VOR/DME on DXO R-020 to PISTN.

EC-1, 19 MAR 2026 to 16 APR 2026

EC-1, 19 MAR 2026 to 16 APR 2026