

WAAS CH 86220 W27A	APP CRS 276°	Rwy Ldg 8708 TDZE 635 Apt Elev 645
--	------------------------	---

RNAV (GPS) RWY 27R

DETROIT METRO WAYNE COUNTY (DTW)

RNP APCH

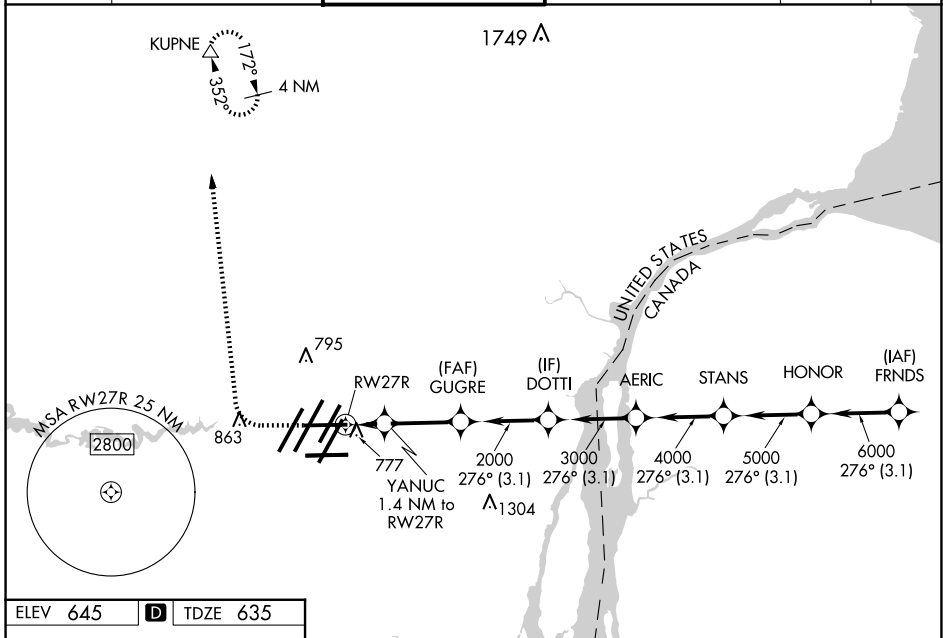
▼ For uncompensated Baro-VNAV systems, LNAV/VNAV NA below -20°C (-4°F) or above 54°C (130°F). For inop ALS, increase LNAV Cat C and D visibility to RVR 6000. Simultaneous approach authorized. LNAV procedure NA during simultaneous operations. Use of FD or AP required during simultaneous operations. ** RVR 1800 authorized with use of FD or AP or HUD to DA.

MALSR

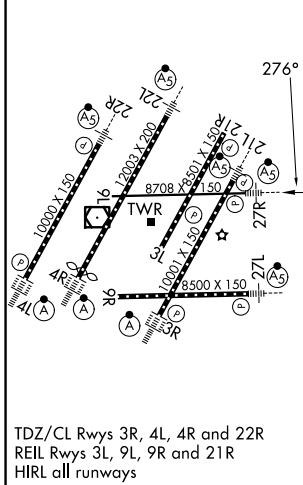


MISSED APPROACH: Climb to 1100 then climbing right turn to 4000 direct KUPNE and hold, continue climb-in-hold to 4000.

D-ATIS 133.675	DETROIT APP CON 125.15 284.0	METRO TOWER 118.4 317.725	GND CON 121.8 (NW) 119.45 (NE) 132.725 (SW) 119.25 (SE)	CLNC DEL 120.65	CPDLC
--------------------------	--	-------------------------------------	---	---------------------------	-------



ELEV 645	D	TDZE 635
----------	----------	----------



1100	4000	KUPNE	VGSi and RNAV glidepath not coincident (VGSi Angle 3.00/TCH 61).					
*LNAV only.		YANUC 1.4 NM to RW27R	GUGRE 2000	DOTTI 3000	AERIC 4000	STANS 5000	HONOR 6000	FRNDS 7000
RW27R		1120*	2000	GP 3.00° TCH 50				
1.4 NM		2.7 NM	3.1	3.1	3.1	3.1		
CATEGORY	A		B		C		D	
LPV DA**			835/24		200 (200-½)			
LNAV/VNAV DA			938/24		303 (300-½)			
LNAV MDA	1040/24		405 (400-½)		1040/40		405 (400-¾)	
C CIRCLING	1180-1		535 (600-1)		1180-1½ 535 (600-1½)		1240-2 595 (600-2)	