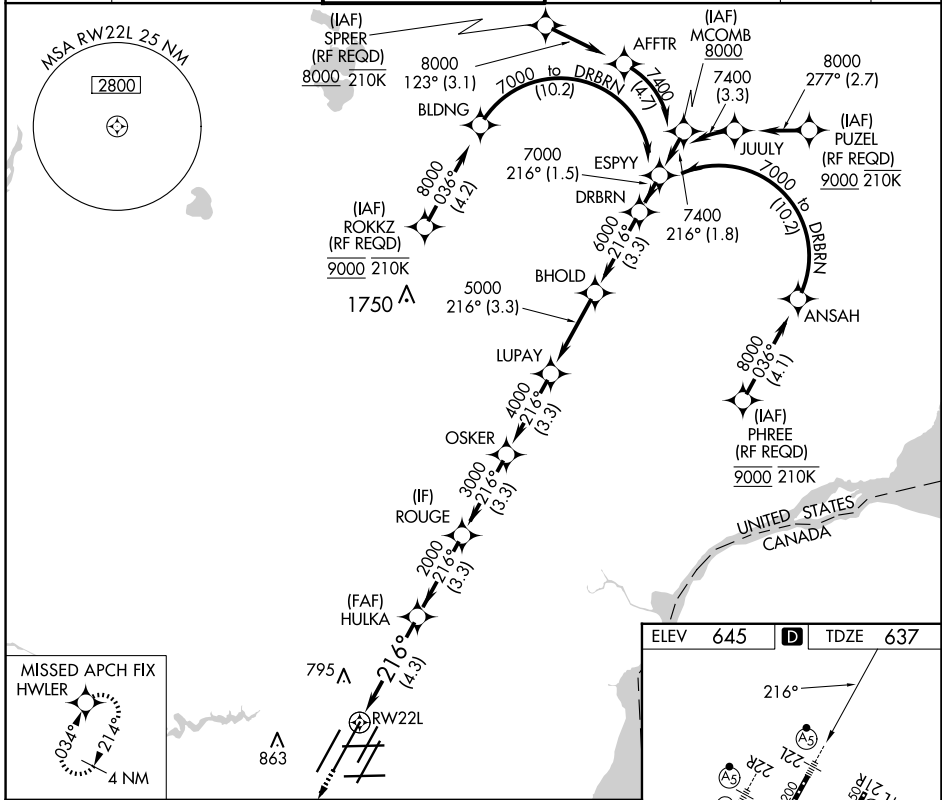


| | | |
|-------------|----------|--------------|
| APP CRS | Rwy Ldg | 12003 |
| 216° | TDZE | 637 |
| | Apt Elev | 645 |

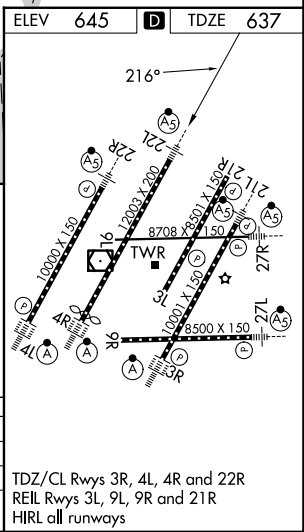
RNAV (RNP) X RWY 22L

DETROIT METRO WAYNE COUNTY (DTW)

| | | | | | | | |
|---|--|---------------------------------------|--|---|--|---------------------------|---|
| RNP AR APCH. | | METRO TOWER 128.125 317.725 | | GND CON 121.8 (NW) 119.45 (NE) 132.725 (SW) 119.25 (SE) | | MALS R | MISSED APPROACH: Climb to 4000 direct HWLER and hold. |
| ▼ For uncompensated Baro-VNAV systems, procedure NA below -10°C (14°F) or above 54°C (130°F). Simultaneous approach authorized. For inop ALS, increase RNP 0.15 all Cats visibility to RVR 4500 and RNP 0.30 all Cats visibility to RVR 6000. | | D-ATIS 133.675 | | DETROIT APP CON 124.05 284.0 | | CLNC DEL 120.65 | CPDLC |



| | | | | |
|-------------|---------|-------|-------------|---|
| 4000 | ↑ | HWLER | DRBRN | |
| | | | 7000 | |
| | | | 6000 | |
| | | | 5000 | |
| | | | 4000 | |
| | | | 3000 | |
| | | | 2000 | |
| | | | GP 2.85° | |
| | | | TCH 60 | |
| | | | 4.3 NM | |
| | | | 3.3 NM | |
| | | | 3.3 NM | |
| | | | 3.3 NM | |
| | | | 3.3 NM | |
| | | | 3.3 NM | |
| CATEGORY | A | B | C | D |
| RNP 0.15 DA | 941/24 | | 304 (300-½) | |
| RNP 0.30 DA | 1040/40 | | 403 (400-¾) | |



AUTHORIZATION REQUIRED

TDZ/CL Rwy 3R, 4L, 4R and 22R
REIL Rwy 3L, 9L, 9R and 21R
HIRL all runways