

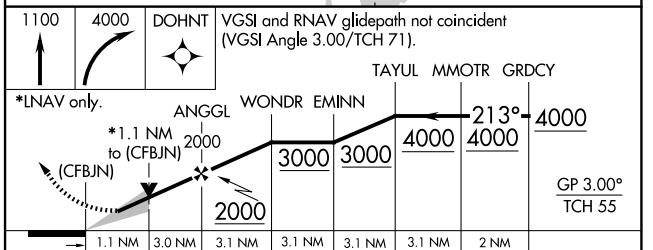
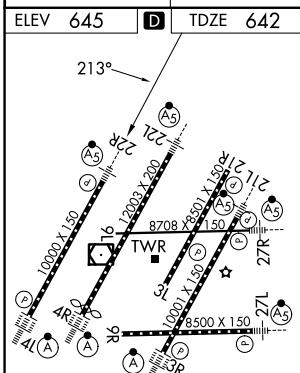
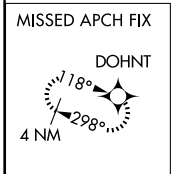
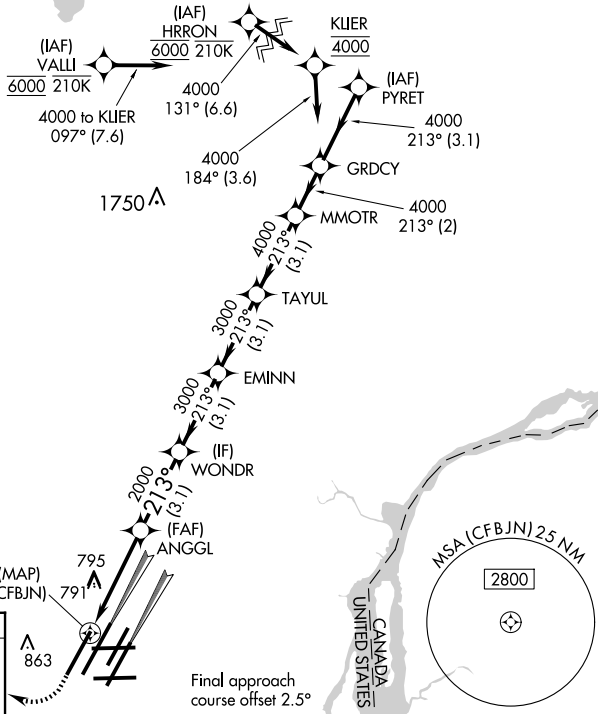
WAAS CH 42939 W22B	APP CRS 213°	Rwy Ldg TDZE Apt Elev	10000 642 645
--	------------------------	-----------------------------	--

RNAV (GPS) Y RWY 22R

DETROIT METRO WAYNE COUNTY (DTW)

<p>▼ For uncompensated Baro-VNAV systems, LNAV/VNAV NA below -19°C (-2°F) or above 54°C (130°F). DME/DME RNP-0.3 NA. Simultaneous approach authorized. LNAV procedure NA during simultaneous operations. Use of FD or AP providing RNAV track guidance required during simultaneous operations.</p>		<p>MALS R</p>	<p>MISSED APPROACH: Climb to 1100 then climbing right turn to 4000 direct DOHNT and hold.</p>		
D-ATIS 133.675	DETROIT APP CON 124.05 284.0	METRO TOWER 135.0 317.725	<p>GND CON</p> <p>121.8 (NW) 119.45 (NE) 132.725 (SW) 119.25 (SE)</p>	CLNC DEL 120.65	CPDLC

RADAR REQUIRED



CATEGORY	A	B	C	D
LPV DA	892/24		250 (300-½)	
LNAV/VNAV DA	1050/45		408 (500-¾)	
LNAV MDA	1060/24	418 (500-½)	1060/40	418 (500-¾)
C CIRCLING	1180-1	535 (600-1)	1180-1½ 535 (600-1½)	1240-2 595 (600-2)

TDZ/CL Rwy 3R, 4L, 4R and 22R
HIRL all runways
REIL Rwy 3L, 9L, 9R and 21R

EC-1, 19 MAR 2026 to 16 APR 2026

EC-1, 19 MAR 2026 to 16 APR 2026