

WAAS CH <b>99601</b> <b>W22A</b>	APP CRS <b>216°</b>	Rwy Ldg <b>12003</b> TDZE <b>637</b> Apt Elev <b>645</b>
--	------------------------	--

# RNAV (GPS) Z RWY 22L

DETROIT METRO WAYNE COUNTY (DTW)

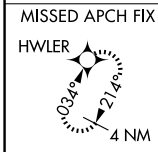
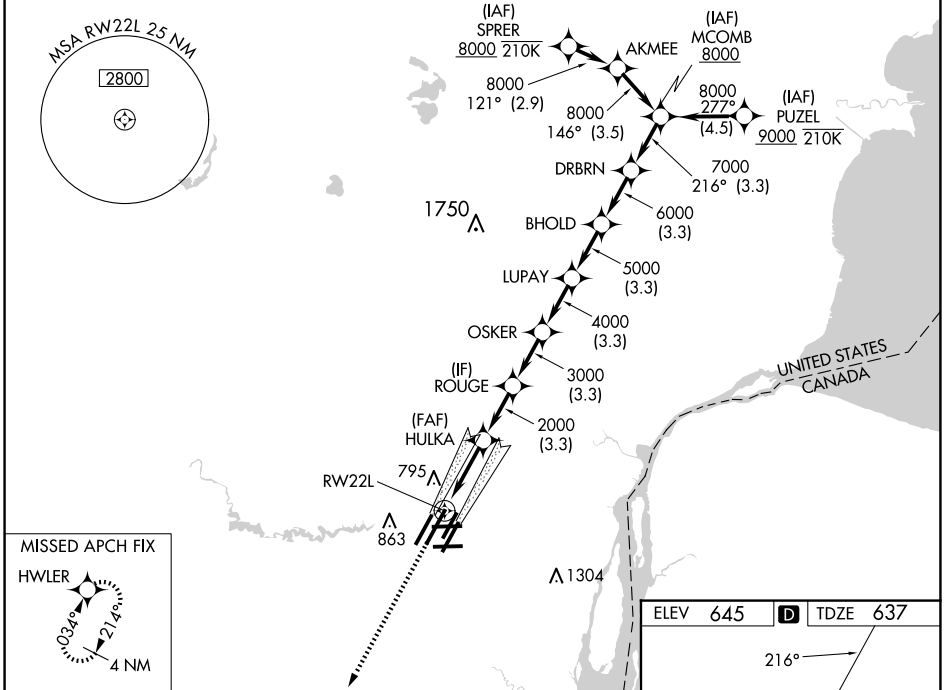
RNP APCH.

▼ For uncompensated Baro-VNAV systems, LNAV/VNAV NA below -10°C (14°F) or above 54°C (130°F). Simultaneous approach authorized. LNAV procedure NA during simultaneous operations. Use of FD or AP required during simultaneous operations. For inop ALS, increase LNAV/VNAV all Cats visibility to RVR 4500 and LNAV Cat C/D visibility to 1½ SM. #RVR 1800 authorized with use of FD or AP or HUD to DA.

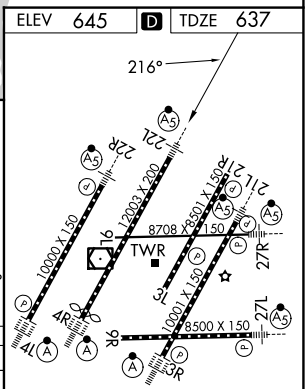


MISSED APPROACH:  
Climb to 4000 direct  
HWLER and hold.

D-ATIS <b>133.675</b>	DETROIT APP CON <b>124.05 284.0</b>	METRO TOWER <b>128.125 317.725</b>	GND CON <b>121.8 (NW) 119.45 (NE)</b> <b>132.725 (SW) 119.25 (SE)</b>	CLNC DEL <b>120.65</b>	CPDLC
--------------------------	--	---------------------------------------	---	---------------------------	-------



4000	HWLER																		
*LNAV only.		<table border="1"> <tr> <td>HULKA</td> <td>ROUGE</td> <td>OSKER</td> <td>LUPAY</td> <td>BHOLD</td> <td>DRBRN</td> <td>MCOMB</td> </tr> <tr> <td>2000</td> <td>3000</td> <td>4000</td> <td>5000</td> <td>6000</td> <td>7000</td> <td>8000</td> </tr> </table>				HULKA	ROUGE	OSKER	LUPAY	BHOLD	DRBRN	MCOMB	2000	3000	4000	5000	6000	7000	8000
HULKA	ROUGE	OSKER	LUPAY	BHOLD	DRBRN	MCOMB													
2000	3000	4000	5000	6000	7000	8000													
RW22L		<table border="1"> <tr> <td>1.3 NM</td> <td>3 NM</td> <td>3.3 NM</td> <td>3.3 NM</td> <td>3.3 NM</td> <td>3.3 NM</td> <td>3.3 NM</td> </tr> </table>				1.3 NM	3 NM	3.3 NM	3.3 NM	3.3 NM	3.3 NM	3.3 NM							
1.3 NM	3 NM	3.3 NM	3.3 NM	3.3 NM	3.3 NM	3.3 NM													
GP 2.85°	TCH 60'																		
CATEGORY	3	A	B	C	D														
LPV DA#		837/24		200 (200-½)															
LNAV/VNAV DA		938/24		301 (300-½)															
LNAV MDA	1100/24	463 (500-½)		1100/50 463 (500-¾)															
CIRCLING	1180-1	535 (600-1)		1180-1½ 535 (600-½) 1240-2 595 (600-2)															



TDZ/CL Rwys 3R, 4L, 4R and 22R  
REIL Rwys 3L, 9L, 9R and 21R  
HIRL all runways

EC-1, 19 MAR 2026 to 16 APR 2026

EC-1, 19 MAR 2026 to 16 APR 2026