

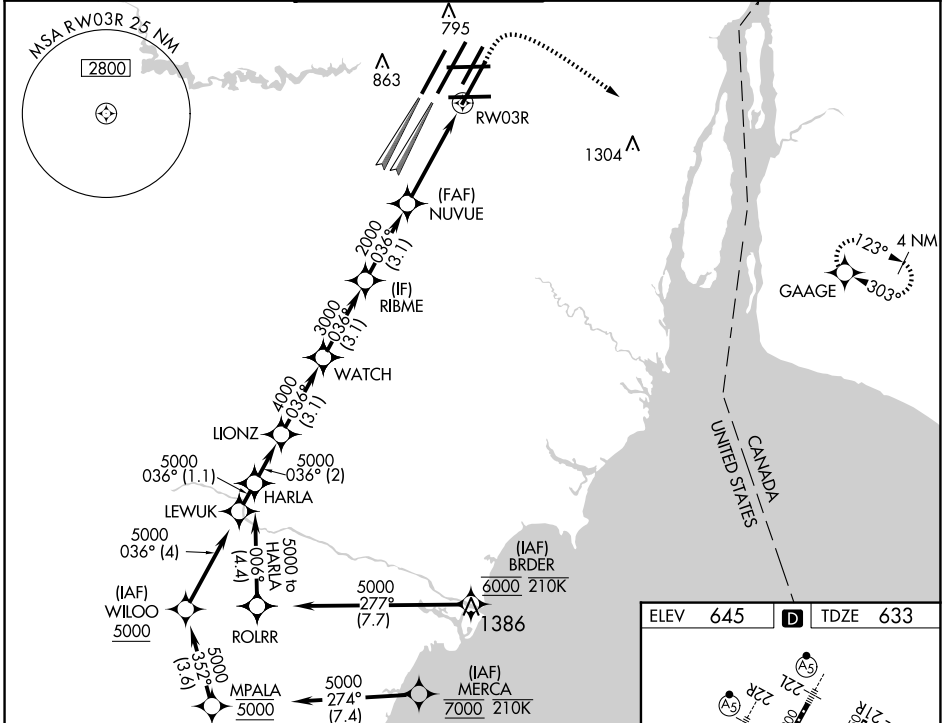
WAAS CH 61304 W03A	APP CRS 036°	Rwy Ldg 10001 TDZE 633 Apt Elev 645
--	------------------------	--

RNAV (GPS) Z RWY 3R

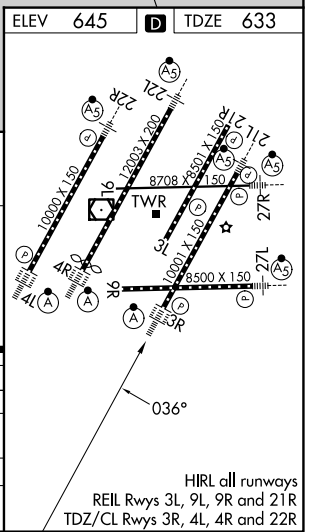
DETROIT METRO WAYNE COUNTY (DTW)

RNP APCH. ▼ For uncompensated Baro-VNAV systems, LNAV/VNAV NA below -19°C (-2°F) or above 54°C (130°F). Simultaneous approach authorized. LNAV procedure NA during simultaneous operations. Use of FD or AP required during simultaneous operations.	ALSF-2 	MISSED APPROACH: Climb to 1100 then climbing right turn to 4000 direct GAAGE and hold, continue climb-in-hold to 4000.
---	------------	--

D-ATIS 133.675	DETROIT APP CON 125.15 284.0	METRO TOWER 118.4 317.725	GND CON 121.8 (NW) 119.45 (NE) 132.725 (SW) 119.25 (SE)	CLNC DEL 120.65	CPDLC
--------------------------	--	-------------------------------------	---	---------------------------	-------



VGSi and RNAV glidepath not coincident (VGSi Angle 3.00/TCH 70).		1100	4000	GAAGE
HARLA	LIONZ	WATCH	RIBME	NUVUE
5000-036°	5000	4000	3000	2000
GP 3.00°				
TCH 54				
	2 NM	3.1 NM	3.1 NM	3.1 NM
				2.9 NM
				1.2
CATEGORY	A	B	C	D
LPV DA	833/18		200 (200-1/2)	
LNAV/VNAV DA	1013/35		380 (400-5/8)	
LNAV MDA	1080/24	447 (500-1/2)	1080/45	447 (500-7/8)
CIRCLING	1180-1	535 (600-1)	1180-1 1/2	1240-2
			535 (600-1 1/2)	595 (600-2)



EC-1, 19 MAR 2026 to 16 APR 2026

EC-1, 19 MAR 2026 to 16 APR 2026

HIRL all runways
REIL Rwy 3L, 9L, 9R and 21R
TDZ/CL Rwy 3R, 4L, 4R and 22R