

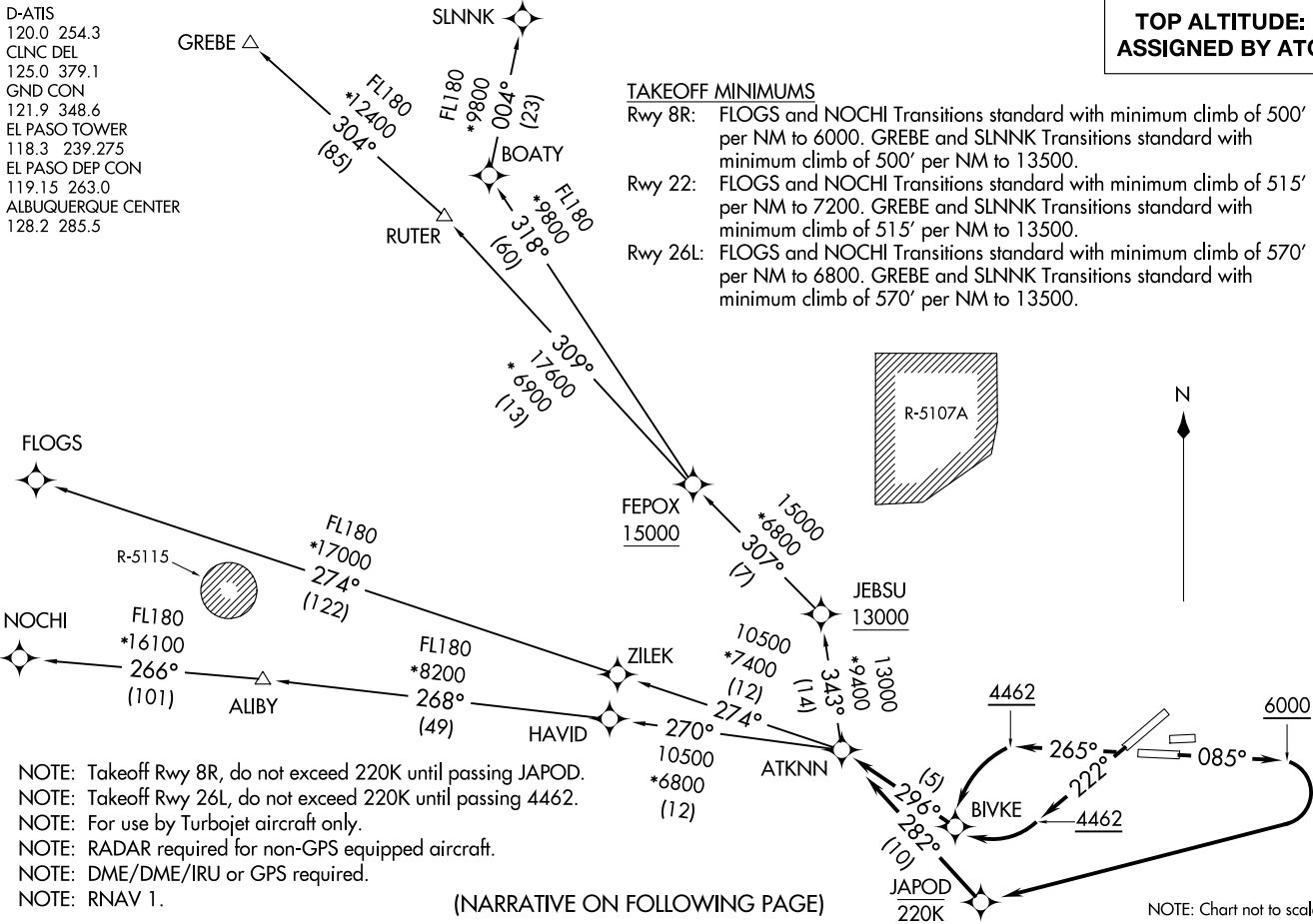
**TOP ALTITUDE:  
ASSIGNED BY ATC**

**TAKEOFF MINIMUMS**

- Rwy 8R: FLOGS and NOCHI Transitions standard with minimum climb of 500' per NM to 6000. GREBE and SLNNK Transitions standard with minimum climb of 500' per NM to 13500.
- Rwy 22: FLOGS and NOCHI Transitions standard with minimum climb of 515' per NM to 7200. GREBE and SLNNK Transitions standard with minimum climb of 515' per NM to 13500.
- Rwy 26L: FLOGS and NOCHI Transitions standard with minimum climb of 570' per NM to 6800. GREBE and SLNNK Transitions standard with minimum climb of 570' per NM to 13500.

ATKNN FIVE DEPARTURE (RNAV)  
(ATKNN5, ATKNN) 21JUL16

D-ATIS  
120.0 254.3  
CLNC DEL  
125.0 379.1  
GND CON  
121.9 348.6  
EL PASO TOWER  
118.3 239.275  
EL PASO DEP CON  
119.15 263.0  
ALBUQUERQUE CENTER  
128.2 285.5



- NOTE: Takeoff Rwy 8R, do not exceed 220K until passing JAPOD.
- NOTE: Takeoff Rwy 26L, do not exceed 220K until passing 4462.
- NOTE: For use by Turbojet aircraft only.
- NOTE: RADAR required for non-GPS equipped aircraft.
- NOTE: DME/DME/IRU or GPS required.
- NOTE: RNAV 1.

(NARRATIVE ON FOLLOWING PAGE)

NOTE: Chart not to scale.

(ATKNN5, ATKNN) 22307  
ATKNN FIVE DEPARTURE (RNAV)

AL-134 (FAA)

EL PASO INTL (EILP)  
EL PASO, TEXAS

EL PASO, TEXAS  
EL PASO INTL (EILP)



DEPARTURE ROUTE DESCRIPTION

TAKEOFF RWY 8R: Climb heading 085° to 6000, then right turn direct JAPOD, then on depicted route to ATKNN, thence . . .

TAKEOFF RWY 22: Climb heading 222° to 4462, then right turn direct BIVKE, then on depicted route to ATKNN, thence . . .

TAKEOFF RWY 26L: Climb heading 265° to 4462, then left turn direct BIVKE, then on depicted route to ATKNN, thence . . .

. . . (transition). Maintain altitude as assigned by ATC, expect filed altitude 10 minutes after departure.

FLOGS TRANSITION (ATKNN5.FLOGS)

GREBE TRANSITION (ATKNN5.GREBE)

NOCHI TRANSITION (ATKNN5.NOCHI)

SLNKN TRANSITION (ATKNN5.SLNKN)

SC-3, 19 MAR 2026 to 16 APR 2026

SC-3, 19 MAR 2026 to 16 APR 2026