

NEVUE THREE DEPARTURE (RNAV)  
(NEVUES.NEVUE) 21 JUL 16

**TOP ALTITUDE:**  
Assigned by ATC

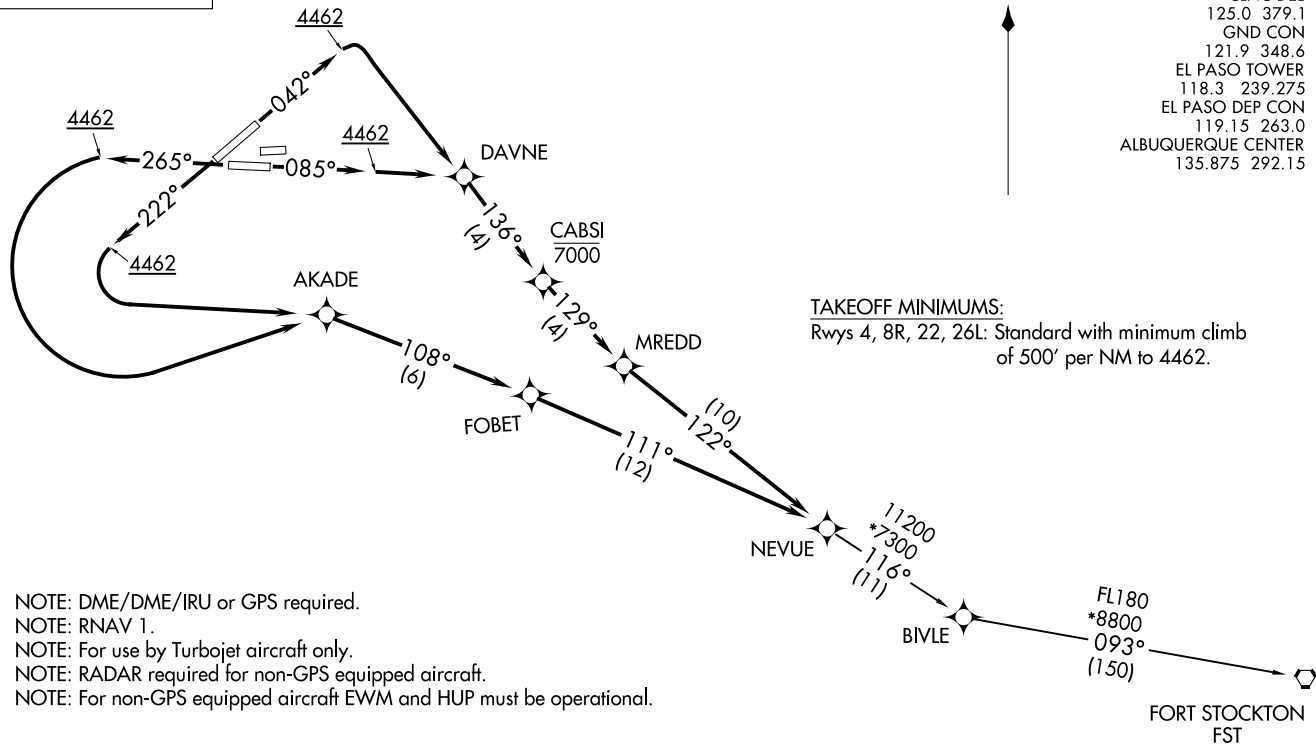


D-ATIS  
120.0 254.3  
CLNC DEL  
125.0 379.1  
GND CON  
121.9 348.6  
EL PASO TOWER  
118.3 239.275  
EL PASO DEP CON  
119.15 263.0  
ALBUQUERQUE CENTER  
135.875 292.15

(NEVUES.NEVUE) 1803Z  
NEVUE THREE DEPARTURE (RNAV)

AL-134 (FAA)

EL PASO INTL (EILP)  
EL PASO, TEXAS



**TAKEOFF MINIMUMS:**  
Rwys 4, 8R, 22, 26L: Standard with minimum climb  
of 500' per NM to 4462.

- NOTE: DME/DME/IRU or GPS required.
- NOTE: RNAV 1.
- NOTE: For use by Turbojet aircraft only.
- NOTE: RADAR required for non-GPS equipped aircraft.
- NOTE: For non-GPS equipped aircraft EWM and HUP must be operational.

NOTE: Chart not to scale.

(NARRATIVE ON FOLLOWING PAGE)

EL PASO, TEXAS  
EL PASO INTL (EILP)

# NEVUE THREE DEPARTURE (RNAV)



## DEPARTURE ROUTE DESCRIPTION

TAKEOFF RWY 4: Climb heading 042° to 4462, then right turn direct DAVNE, then on track 136° to cross CABSI at or below 7000, then on track 129° to MREDD, then on track 122° to NEUVE. Thence. . . .

TAKEOFF RWY 8R: Climb heading 085° to 4462, then direct DAVNE, then on track 136° to cross CABSI at or below 7000, then on track 129° to MREDD, then on track 122° to NEUVE. Thence. . . .

TAKEOFF RWY 22: Climb heading 222° to 4462, then left turn direct AKADE, then on track 108° to FOBET, then on track 111° to NEVUE. Thence. . . .

TAKEOFF RWY 26L: Climb heading 265° to 4462, then left turn direct AKADE, then on track 108° to FOBET, then on track 111° to NEVUE. Thence. . . .

. . . .on depicted route to FST VORTAC.

FT STOCKTON TRANSITION (NEVUE3.FST)

SC-3, 19 MAR 2026 to 16 APR 2026

SC-3, 19 MAR 2026 to 16 APR 2026