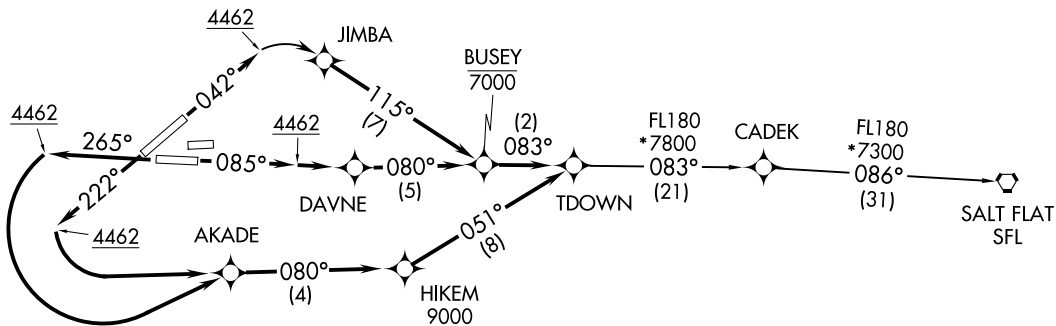
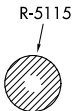
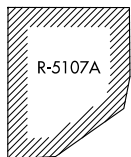


**TOP ALTITUDE:  
ASSIGNED BY ATC**

D-ATIS	120.0	254.3
CLNC DEL	125.0	379.1
GND CON	121.9	348.6
EL PASO TOWER	118.3	239.275
EL PASO DEP CON	119.15	263.0
ABQ CENTER	135.875	292.15



**TAKEOFF MINIMUMS**

Rwys 4, 8R: Standard with a minimum climb of 500' per NM to 4462.  
Rwys 22, 26L: Standard with a minimum climb of 500' per NM to 9000.

- NOTE: DME/DME/IRU or GPS required.
- NOTE: RNAV 1.
- NOTE: For use by Turbojet aircraft only.
- NOTE: RADAR required for non-GPS equipped aircraft.

(NARRATIVE ON FOLLOWING PAGE)

NOTE: Chart not to scale.

TDOWN THREE DEPARTURE (RNAV)  
(TDOWN3.TDOWN) 21JUL16

(TDOWN3.TDOWN) 22307  
TDOWN THREE DEPARTURE (RNAV)

EL PASO, TEXAS  
EL PASO INTL (EILP)

AL-134 (FAA)  
EL PASO INTL (EILP)  
EL PASO, TEXAS

# TDOWN THREE DEPARTURE (RNAV)



## DEPARTURE ROUTE DESCRIPTION

TAKEOFF RWY 4: Climb heading 042° to 4462, then right turn direct JIMBA, then on track 115° to cross BUSEY at or below 7000, then on track 083° to TDOWN. Thence . . . .

TAKEOFF RWY 8R: Climb heading 085° to 4462, then direct DAVNE, then on track 080° to cross BUSEY at or below 7000, then on track 083° to TDOWN. Thence . . . .

TAKEOFF RWY 22: Climb heading 222° to 4462, then left turn direct AKADE, then on track 080° to cross HIKEM at or above 9000, then on track 051° to TDOWN. Thence . . . .

TAKEOFF RWY 26L: Climb heading 265° to 4462, then left turn direct AKADE, then on track 080° to cross HIKEM at or above 9000, then on track 051° to TDOWN. Thence . . . .

. . . . on depicted route to SFL VORTAC.

SALT FLAT TRANSITION (TDOWN3.SFL)

SC-3, 19 MAR 2026 to 16 APR 2026

SC-3, 19 MAR 2026 to 16 APR 2026