

FALLON, NEVADA

RNAV (GPS) RWY 31L

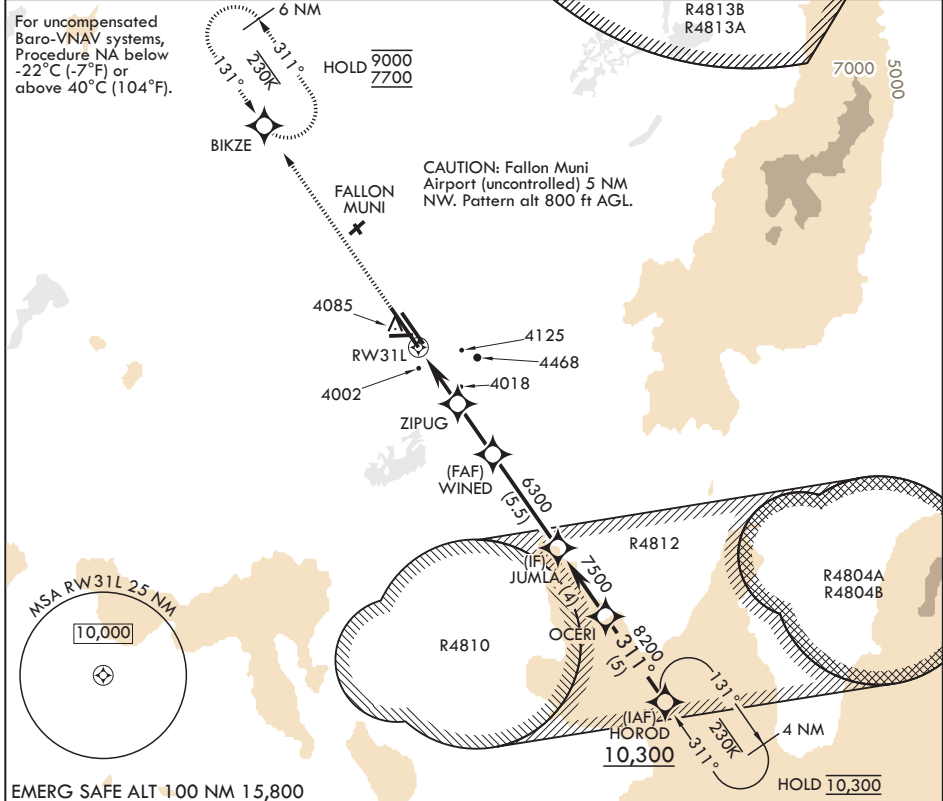
APCH CRS 311°	Rwy ldg TDZE Arpt Elev	14,001 3927 3935
------------------	------------------------------	------------------------

(USN)

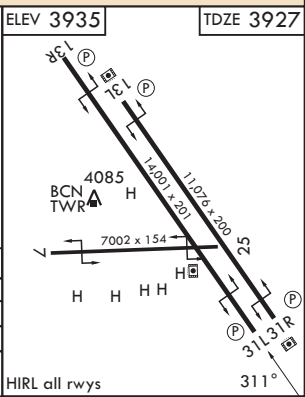
FALLON NAS (VAN VOORHIS FLD) (KNFL)

RNP APCH-GPS MISSED APPROACH: Climb to 5000 then climbing to 7700 direct BIKZE and hold, continue climb-in-hold to 7700.
direct BIKZE and hold, continue climb-in-hold to 7700.

ATIS★ 370.925	NAVY FALLON APP CON/DEP CON★ 120.85 360.2	NAVY FALLON TOWER★ 119.25 340.2	GND CON 251.15	ASR/PAR
------------------	--	------------------------------------	-------------------	---------



5000	7700	BIKZE	VGSi and RNAV glidepath not coincident (VGSi Angle 3.50/TCH 61)	
↑ crs 311°	↑	⊕		
			JUMLA 7500	
<p>0.8 NM to RW31L</p>			GP 3.50° TCH 50	
CATEGORY	A	B	C	D
LNAV/VNAV DA	4177-3/4	250	(300-3/4)	
LNAV MDA	4280-1	353	(400-1)	
CIRCLING	4400-1 465 (500-1)	4440-1 505 (600-1)	4780-2 1/2 845 (900-2 1/2)	5120-3 1185 (1200-3)



FALLON, NEVADA

39°25'N - 118°42'W

FALLON NAS (VAN VOORHIS FLD) (KNFL)

Amdt 4 02OCT25

RNAV (GPS) RWY 31L

SW-4, 19 MAR 2026 to 16 APR 2026

SW-4, 19 MAR 2026 to 16 APR 2026