

# TACAN Y RWY 13R

TACAN NFL Chan <b>82</b>	APCH CRS <b>141°</b>	Rwy ldg <b>14,001</b> TDZE <b>3935</b> Arprt Elev <b>3935</b>
-----------------------------	-------------------------	---

[USN]

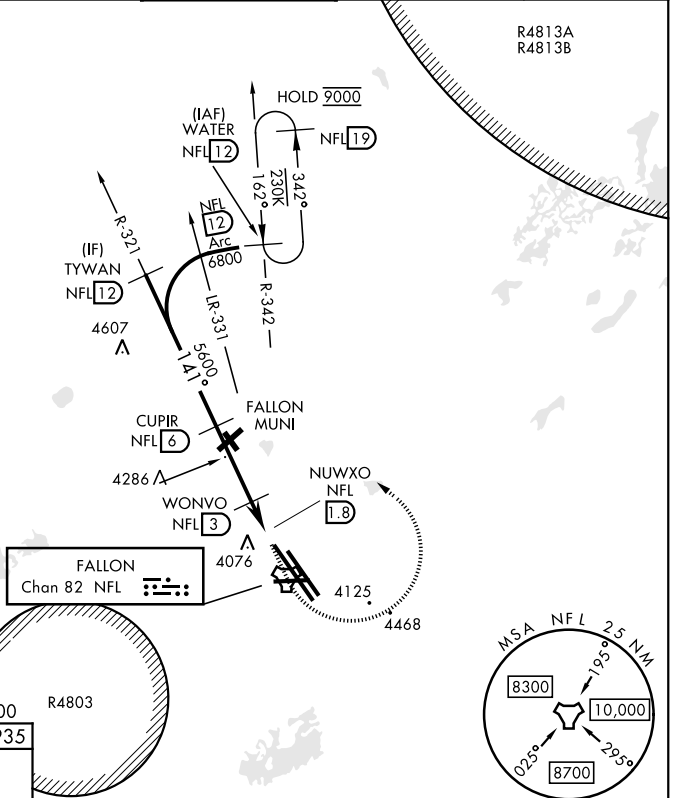
FALLON NAS (VAN VOORHIS FLD) (KNFL)

**MISSED APPROACH:** Climb to 8000 direct NFL TACAN, and left turn on heading 297° and NFL R-342 to WATER and hold, continue climb-in-hold to 8000.

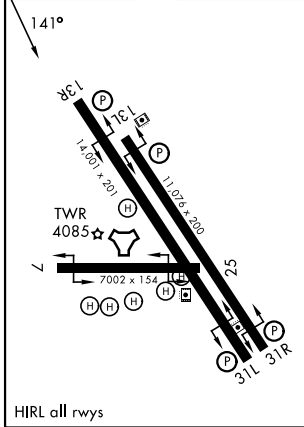
ATIS ★ <b>370.925</b>	NAVY FALLON APP CON ★ <b>120.85 360.2</b>	NAVY FALLON TOWER ★ <b>119.25 340.2</b>	GND CON <b>251.15</b>	ASR/PAR
--------------------------	--	--	--------------------------	---------

**CAUTION:**  
Fallon Muni Airport  
(uncontrolled) 5 NM NW.  
Pattern alt 800' AGL.

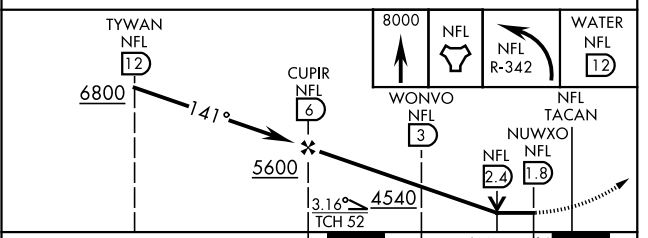
**CAUTION:**  
RCL 91° from FAC at 3000'  
from threshold.



EMERG SAFE ALT 100 NM 15,800	
ELEV 3935	TDZE 3935



HIRL all rwys



CATEGORY	A	B	C	D
S-13R	4380-1	445 (500-1)	4380-1 3/8	445 (500-1 3/8)
CIRCLING	4400-1 465 (500-1)	4440-1 505 (600-1)	4780-2 1/2 845 (900-2 1/2)	5120-3 1185 (1200-3)

FALLON, NEVADA  
Amdt 4 02OCT25

39°25'N-118°42'W FALLON NAS (VAN VOORHIS FLD) (KNFL)

# TACAN Y RWY 13R

SW-4, 19 MAR 2026 to 16 APR 2026

SW-4, 19 MAR 2026 to 16 APR 2026