

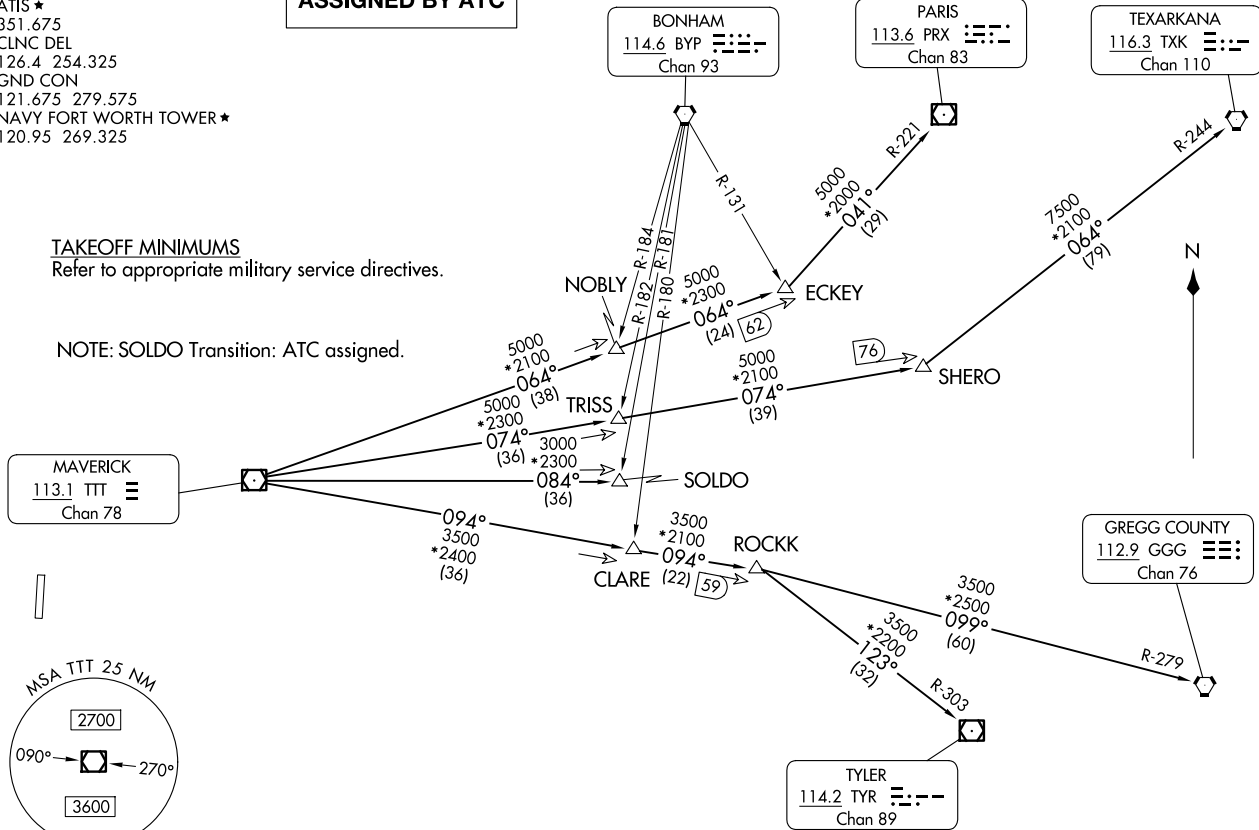
GARLAND SIX DEPARTURE  
(GARL6.TT) 17 APR 25

FORT WORTH, TEXAS  
FORT WORTH NAS JRB (CARSWELL FLD) (KNF.W)

LONE STAR DEP CON  
125.8 257.95  
ATIS ★  
351.675  
CLNC DEL  
126.4 254.325  
GND CON  
121.675 279.575  
NAVY FORT WORTH TOWER ★  
120.95 269.325

**TOP ALTITUDE:  
ASSIGNED BY ATC**

**RADAR and DME required.**



**TAKEOFF MINIMUMS**  
Refer to appropriate military service directives.

NOTE: SOLDO Transition: ATC assigned.

NOTE: Chart not to scale.

(CONTINUED ON FOLLOWING PAGE)

(GARL6.TT) 25219  
GARLAND SIX DEPARTURE

AL-160 (FAA)

FORT WORTH NAS JRB (CARSWELL FLD) (KNF.W)  
FORT WORTH, TEXAS



**DEPARTURE ROUTE DESCRIPTION**

When entering controlled airspace, fly assigned heading for RADAR vectors to appropriate route. Maintain ATC assigned altitude.

GREGG COUNTY TRANSITION (GARL6.GGG): From over TTT VOR/DME on TTT R-094 to ROCKK, then on GGG R-279 to GGG VORTAC.

PARIS TRANSITION (GARL6.PRX): From over TTT VOR/DME on TTT R-064 to ECKEY, then on PRX R-221 to PRX VOR/DME.

SOLDO TRANSITION (GARL6.SOLDO): From over TTT VOR/DME on TTT R-084 to SOLDO.

TEXARKANA TRANSITION (GARL6.TXK): From over TTT VOR/DME on TTT R-074 to SHERO, then on TXK R-244 to TXK VORTAC.

TYLER TRANSITION (GARL6.TYR): From over TTT VOR/DME on TTT R-094 to ROCKK, then on TYR R-303 to TYR VOR/DME.

SC-2, 19 MAR 2026 to 16 APR 2026

SC-2, 19 MAR 2026 to 16 APR 2026