

# LUFKIN FOUR DEPARTURE

GALVESTON, TEXAS

HOUSTON DEP CON  
 134.45 284.0  
 ASOS  
 123.95  
 CLNC DEL (When twr closed)  
 135.35  
 GND CON  
 118.625  
 GALVESTON TOWER ★  
 120.575 (CTAF)

**TOP ALTITUDE:  
 ASSIGNED BY ATC**

LITTLE ROCK  
 115.1 LIT  
 Chan 98

RADAR and DME required.

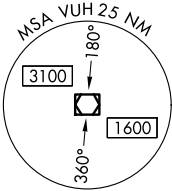
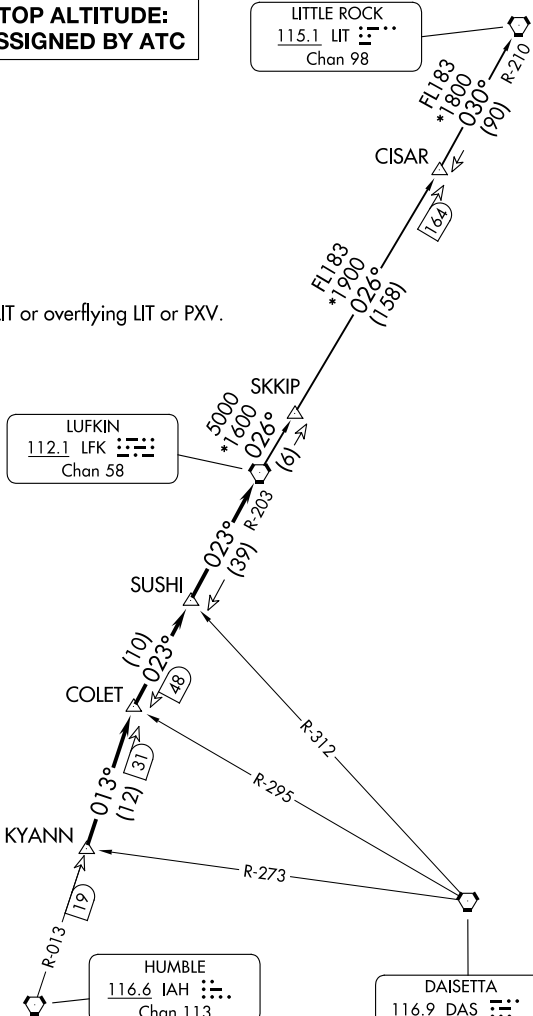
NOTE: For aircraft destined LIT or overflying LIT or PXV.

LUFKIN  
 112.1 LFK  
 Chan 58

HUMBLE  
 116.6 IAH  
 Chan 113

DAISETTA  
 116.9 DAS  
 Chan 116

GALVESTON  
 113.0 VUH  
 Chan 77



TAKEOFF MINIMUMS  
 Rwys 14, 18, 32, 36: Standard.

NOTE: Chart not to scale.

(CONTINUED ON FOLLOWING PAGE)

# LUFKIN FOUR DEPARTURE

GALVESTON, TEXAS

SCHOLES INTL AT GALVESTON (GLS)

SC-5, 19 MAR 2026 to 16 APR 2026

SC-5, 19 MAR 2026 to 16 APR 2026

# LUFKIN FOUR DEPARTURE



## DEPARTURE ROUTE DESCRIPTION

TAKEOFF RUNWAYS 14, 18, 36: When entering controlled airspace, climb on assigned heading for RADAR vectors to KYANN INT. Maintain ATC assigned altitude. Expect filed altitude 10 minutes after departure, thence. . .

TAKEOFF RUNWAY 32: Climb on heading 318° to 800 before turning. When entering controlled airspace, climb on assigned heading for RADAR vectors to KYANN INT. Maintain ATC assigned altitude. Expect filed altitude 10 minutes after departure, thence. . .

. . .on IAH R-013 to COLET INT, then on depicted route to LFK VORTAC.

LITTLE ROCK TRANSITION (LFK4.LIT): From over LFK VORTAC on LFK R-026 to CISAR, then on LIT R-210 to LIT VORTAC.

SC-5, 19 MAR 2026 to 16 APR 2026

SC-5, 19 MAR 2026 to 16 APR 2026