

LOC/DME I-ZUK 111.75 Chan 54 (Y)	APP CRS 230°	Rwy Ldg 11200 TDZE 783 Apt Elev 796
---	------------------------	--

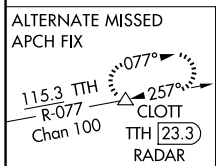
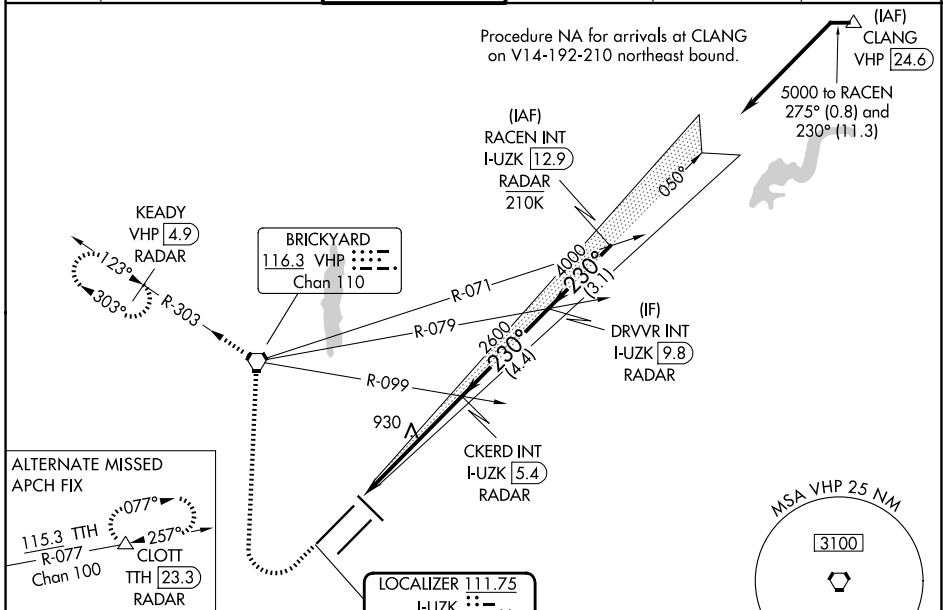
ILS RWY 23R (SA CAT I & II)

INDIANAPOLIS INTL (IND)

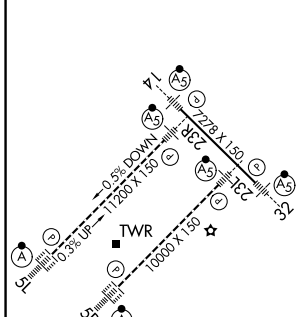
Simultaneous approach authorized. DME or RADAR required. Requires specific OPSPEC, MSPEC, or LOA approval and use of HUD to DH. Reduced lighting: requires specific OPSPEC, MSPEC, or LOA approval and use of autoland or HUD to touchdown.

MALS R MISSED APPROACH: Climb to 1500 then climbing right turn to 3000 direct VHP VORTAC and on VHP R-303 to KEADY/VHP 4.9 DME/RADAR and hold.

D-ATIS 134.25	INDIANAPOLIS APP CON 128.175 317.8	INDY TOWER 120.9 251.1	GND CON 121.9	CLNC DEL 128.75 251.1	CPDLC
-------------------------	--	----------------------------------	-------------------------	---------------------------------	-------



ELEV 796	D	TDZE 783
----------	----------	----------



1500	3000	VHP	VHP R-303	KEADY VHP 4.9 RADAR	VGSI and ILS glidepath not coincident (VGSI Angle 3.00/TCH 71).
		CKERD INT I-UZK 5.4 RADAR	DRVVR INT I-UZK 9.8 RADAR	RACEN INT I-UZK 12.9 RADAR	
		2600	4000	5000	GS 3.00° TCH 55
11.60		5.5 NM	4.4 NM	3.1 NM	

CATEGORY	A	B	C	D
S-ILS 23R	SA CAT I RA 140/14 150 DA 933			
S-ILS 23R	SA CAT II RA 96/12 100 DA 883			

SA CATEGORY I & II ILS - SPECIAL AIRCREW & AIRCRAFT CERTIFICATION REQUIRED

EC-2, 19 MAR 2026 to 16 APR 2026

EC-2, 19 MAR 2026 to 16 APR 2026