

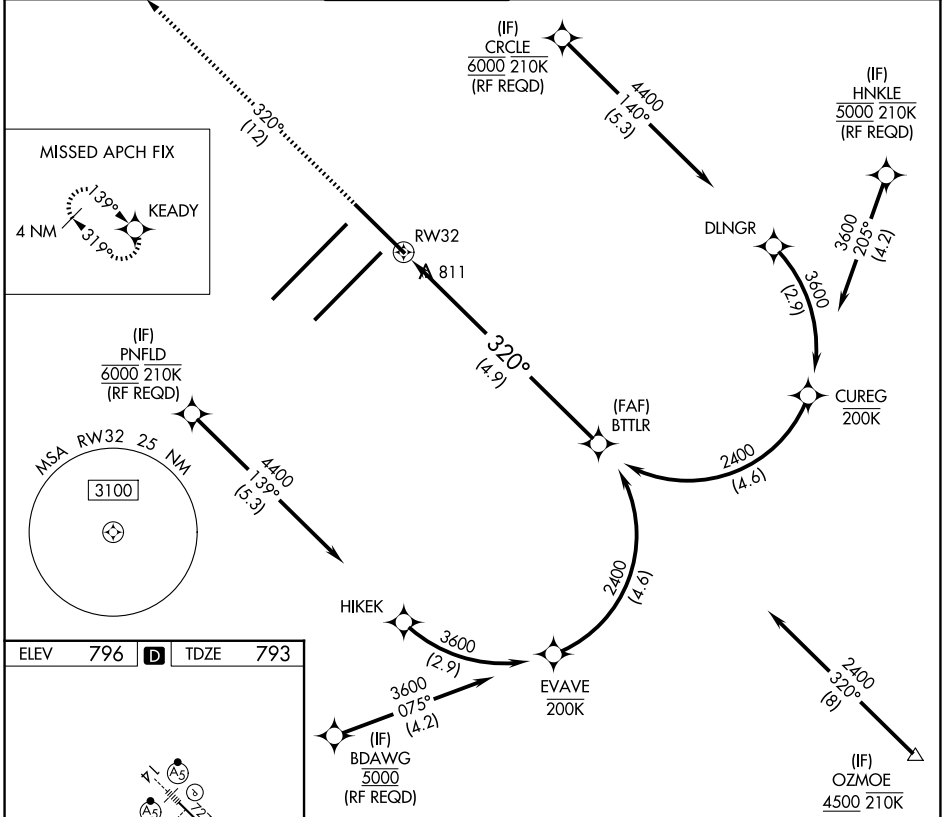
APP CRS	Rwy Ldg	<b>7278</b>
<b>320°</b>	TDZE	<b>793</b>
	Apt Elev	<b>796</b>

# RNAV (RNP) Z RWY 32

INDIANAPOLIS INTL (IND)

	For uncompensated Baro-VNAV systems, procedure NA below -18°C (2°F) or above 54°C (130°F). GPS required.	MALSR 	MISSED APPROACH: Climb to 3000 on track 320° to KEADY and hold.

D-ATIS	INDIANAPOLIS APP CON	INDY TOWER	GND CON	CLNC DEL	CPDLC
<b>134.25</b>	<b>128.175 317.8</b>	<b>120.9 251.1</b>	<b>121.9</b>	<b>128.75 251.1</b>	



ELEV	<b>796</b>	<b>D</b>	TDZE	<b>793</b>
------	------------	----------	------	------------

Vertical profile: 3000 ft → KEADY → 2728 X 1.50 → 2521 X 1.50 → 2314 X 1.50 → 2107 X 1.50 → 1900 X 1.50 → RWY 32. Speed restrictions: 250, 200, 150, 100, 50.

HIRL all Rwys  
TDZ/CL Rwys 5L and 5R

3000	KEADY	VGSI and RNAV glidepath not coincident (VGSI Angle 3.00/TCH 73).	BTTLR
↑			2400
Ir 320°			2400
	RW32	See planview for multiple IF locations.	GP 3.00° TCH 53
4.9 NM			

CATEGORY	A	B	C	D
RNP 0.19 DA		1134/30	341 (400-%)	
RNP 0.30 DA		1196/45	403 (400-%)	

**AUTHORIZATION REQUIRED**