

HI-TACAN W RWY 8

VORTAC EYW 113.5 Chan 82	APCH CRS 098°	Rwy Idg 10,001 TDZE 4 Arprt Elev 6
--	-------------------------	---

[USN]

KEY WEST NAS (BOCA CHICA FLD) (KNQX)

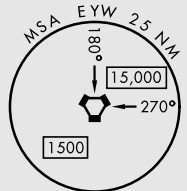
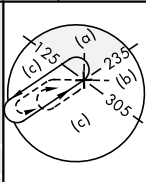
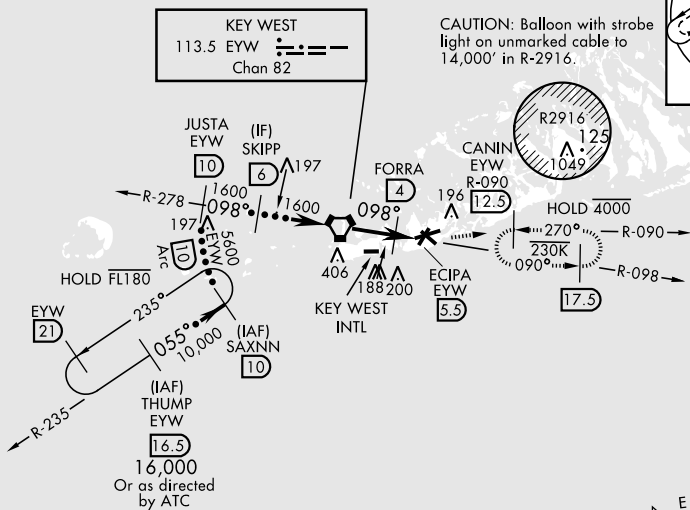
RADAR required

ALSf-1

MISSED APPROACH: Climbing left turn to 1600 intercept EYW VORTAC R-090 to CANIN and hold.

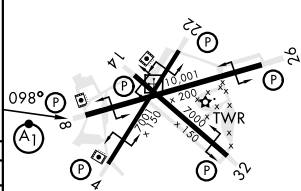
ATIS ★ 307.025	NAVY KEY WEST APP CON 124.025 313.7	NAVY KEY WEST TOWER ★ 118.575 340.25	GND CON 121.7 336.45	CLNC DEL 121.2 357.4	ASR/PAR
--------------------------	---	--	--------------------------------	--------------------------------	---------

CAUTION: Excessive descent gradients multiple segments



EMERG SAFE ALT 100 NM 15,000

THUMP EYW 16.5	SAXNN EYW 10	JUSTA EYW 10	SKIPP EYW 6	EYW VORTAC	FORRA EYW 4.0	ECIPA EYW 5.3	CANIN EYW R-090 12.5	ELEV 6	TDZE 4
† Or as directed by ATC									
‡ FORRA to MAP									
‡‡									
3.11° TCH 44									
CATEGORY	C		D		E				
S-8	440-1¼		436 (500-1¼)						
CIRCLING	500-1½ 494 (500-1½)		560-2		554 (600-2)				
							HIRL all rwys		



HI-TACAN W RWY 8

SE-3, 19 MAR 2026 to 16 APR 2026

SE-3, 19 MAR 2026 to 16 APR 2026