

HI-TACAN X RWY 8

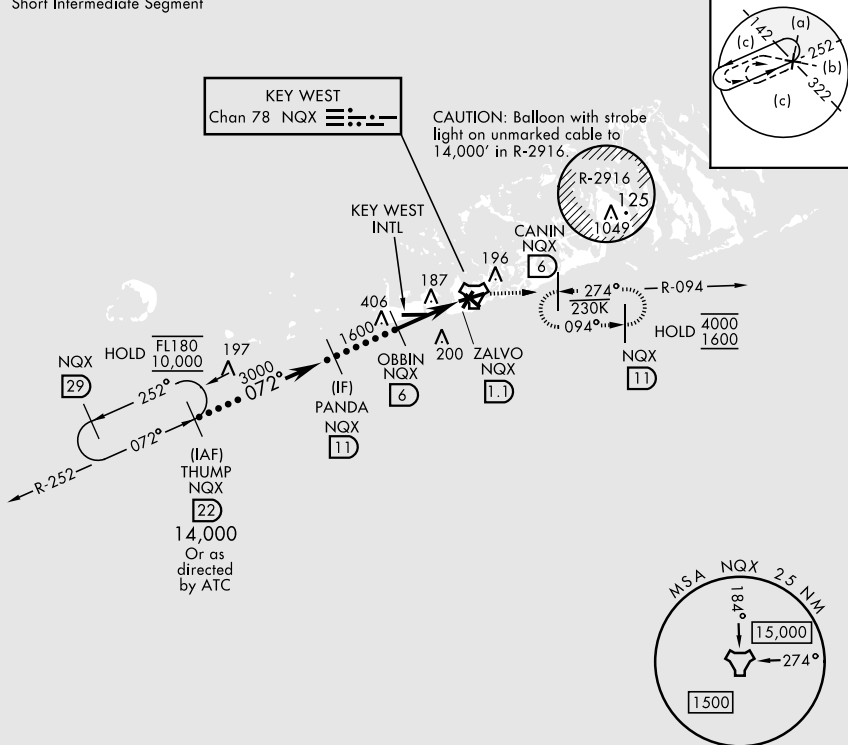
TACAN NQX Chan 78	APCH CRS 072°	Rwy ldg TDZE Arprt Elev	10,001 4 6
----------------------	------------------	-------------------------------	------------------

[USN] KEY WEST NAS (BOCA CHICA FLD) (KNQX)

RADAR required * When ALS inop, increase vis to 1 1/4 miles.	ALSF-1 	MISSED APPROACH: Climb to 1600 via R-252 to NQX TACAN then via R-094 to CANIN (NQX R-094/6 DME) and hold.
---	------------	---

ATIS * 307.025	NAVY KEY WEST APP CON 124.025 313.7	NAVY KEY WEST TOWER * 118.575 340.25	GND CON 121.7 336.45	CLNC DEL 121.2 357.4	ASR/PAR
-------------------	--	---	-------------------------	-------------------------	---------

CAUTION: Short Intermediate Segment



EMERG SAFE ALT 100 NM 15,000

THUMP NQX Δ 22 Δ	PANDA NQX Δ 11 Δ	OBBIN NQX Δ 6 Δ	NQX Δ 2.3 Δ	ZALVO NQX Δ 1.1 Δ	NQX TACAN Δ 11 Δ	ELEV 6	TDZE 4
14,000 Or as directed by ATC	3000	1600	1600 NQX R-252	NQX R-094			
		2.97° TCH 44	4.9 NM				
CATEGORY	C	D	E				
S-8 *	440-3/4	436	(500-3/4)				
CIRCLING	500-1 1/2 494 (500-1 1/2)	560-2	554 (600-2)				
HIRL all rwys							

HI-TACAN X RWY 8

SE-3, 19 MAR 2026 to 16 APR 2026

SE-3, 19 MAR 2026 to 16 APR 2026