

# HI-TACAN Z RWY 32

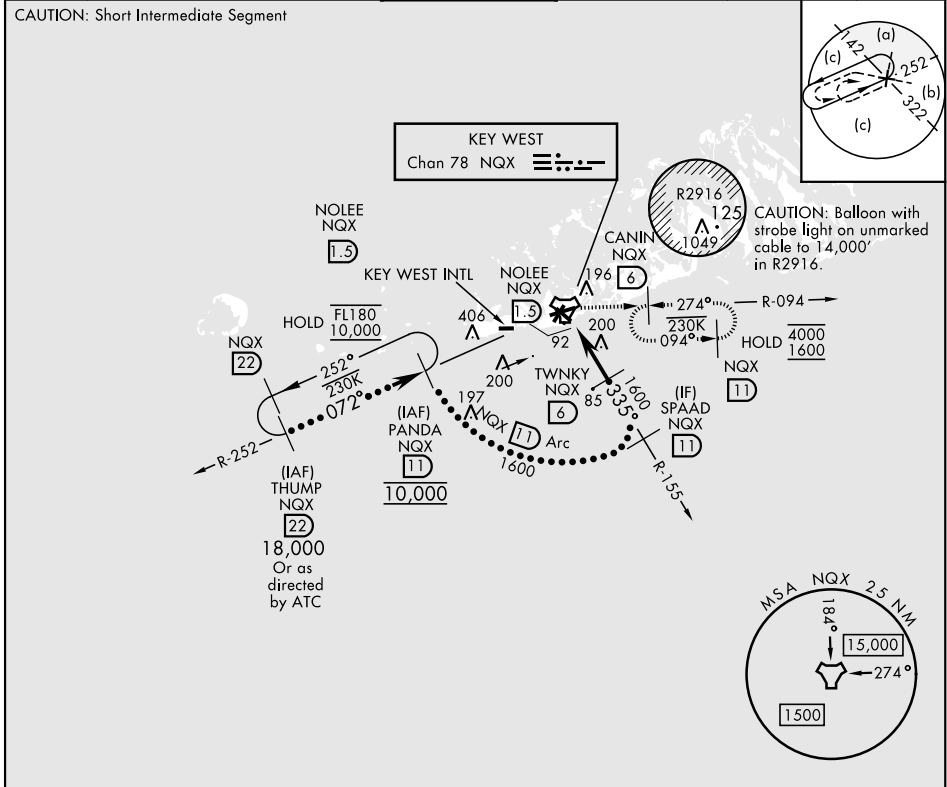
TACAN	NQX	APCH CRS	Rwy ldg TDZE	7000
Chan	78	335°	Arprt Elev	4
				6

[USN]

KEY WEST NAS (BOCA CHICA FLD) (KNQX)

RADAR required	MISSED APPROACH: Climb to 1600 via NQX TACAN R-155 to NQX, then climbing right turn to CANIN and hold.
----------------	--

ATIS ★ 307.025	NAVY KEY WEST APP CON 124.025 313.7	NAVY KEY WEST TOWER ★ 118.575 340.25	GND CON 121.7 336.45	CLNC DEL 121.2 357.4	ASR/PAR
-------------------	--	---	-------------------------	-------------------------	---------



EMERG SAFE ALT 100 NM 15,000	ELEV 6	TDZE 4				
THUMP NQX 22 18,000 Or as directed by ATC	PANDA NQX 11 10,000	SPAAD NQX 11 1600	TWNKY NQX 6 1600	JATAL NQX 3 720	NOLEE NQX 1.5 2.99° TCH 45	NQX TACAN
3.0 NM		1.5 NM		0.6		
CATEGORY	C	D	E			
S-32	360-1	356	(400-1)			
CIRCLING	500-1½ 494 (500-1½)	560-2	554 (600-2)			
HIRL all rwys						

KEY WEST, FLORIDA  
Amdt 4 23FEB23

24°34'N-81°41'W KEY WEST NAS (BOCA CHICA FLD) (KNQX)

# HI-TACAN Z RWY 32

SE-3, 19 MAR 2026 to 16 APR 2026

SE-3, 19 MAR 2026 to 16 APR 2026