

# HI-TACAN Z RWY 4

TACAN NQX Chan <b>78</b>	APCH CRS <b>044°</b>	Rwy Idg TDZE Arprt Elev	<b>7001</b> <b>4</b> <b>6</b>
-----------------------------	-------------------------	-------------------------------	-------------------------------------

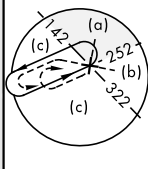
[USN] KEY WEST NAS (BOCA CHICA FLD) (KNQX)

RADAR required  
▼

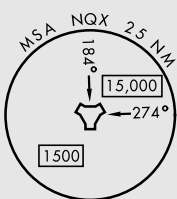
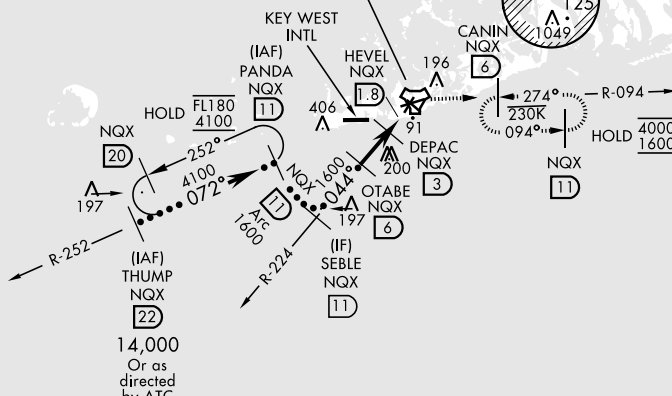
MISSED APPROACH: Climb to 1600 via NQX TACAN R-224 to NQX then via NQX R-094 to CANIN and hold.

ATIS ★ <b>307.025</b>	NAVY KEY WEST APP CON <b>124.025 313.7</b>	NAVY KEY WEST TOWER ★ <b>118.575 340.25</b>	GND CON <b>121.7 336.45</b>	CLNC DEL <b>121.2 357.4</b>	ASR/PAR
--------------------------	---	--	--------------------------------	--------------------------------	---------

CAUTION: Short Intermediate Segment

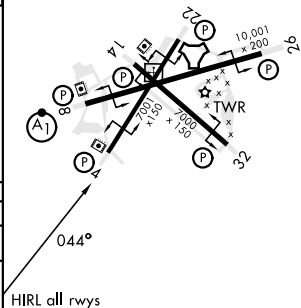


CAUTION: Balloon with strobe light on unmarked cable to 14,000' in R-2916.



EMERG SAFE ALT 100 NM 15,000

†from DEPAC to MAP		1600 NQX R-224	NQX	ELEV 6	TDZE 4
THUMP NQX (22)	PANDA NQX (11)	SEBLE NQX (11)	OTABE NQX (6)	DEPAC NQX (3)	HEVEL NQX (1.8)
14,000 Or as directed by ATC	4100	1600 Arc	1600	640	NQX TACAN
072°	044°	044°	044°	044°	044°
3.04° TCH 35					
†		VGSI and decent angles not coincident (VGSI Angle 3.00/TCH 50).			
3 NM		1.2 NM		0.7	
CATEGORY	C	D	E		
S-4	360-1	356	(400-1)		
CIRCLING	500-1½ 494 (500-1½)	560-2	554 (600-2)		



# HI-TACAN Z RWY 4

SE-3, 19 MAR 2026 to 16 APR 2026

SE-3, 19 MAR 2026 to 16 APR 2026