

KEY WEST, FLORIDA

RNAV (GPS) RWY 32

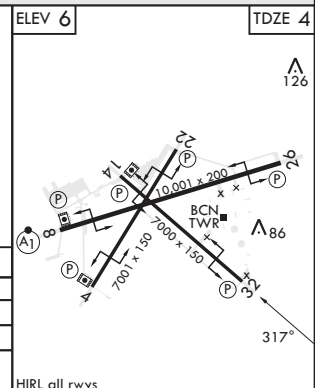
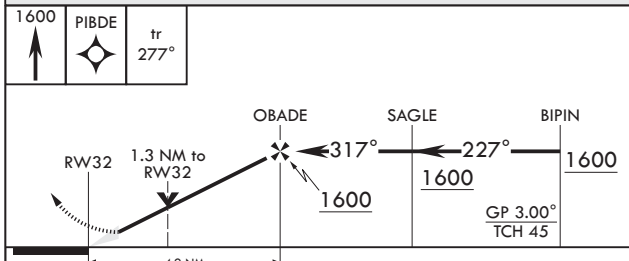
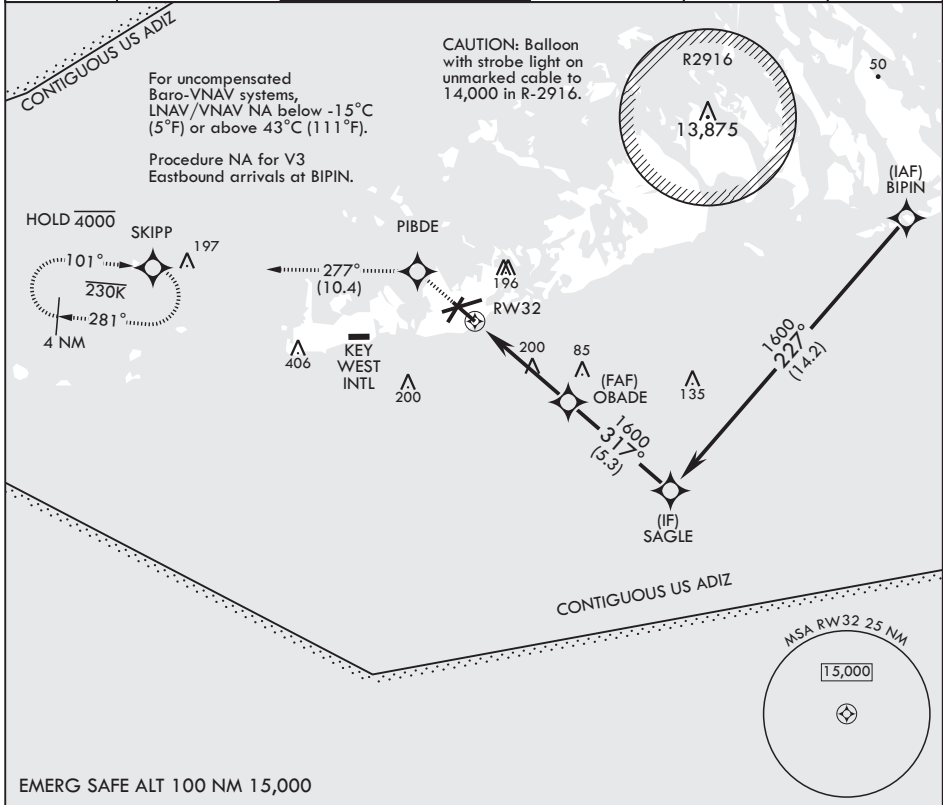
APCH CRS 317°	Rwy Idg TDZE Arpt Elev	7000 4 6
------------------	------------------------------	----------------

-(USN)

KEY WEST NAS (BOCA CHICA FLD) (KNQX)

RNP APCH **▽** MISSED APPROACH: (Do not exceed 230 KIAS until PIBDE.) Climb to 1600 direct PIBDE, track 277° to SKIPP and hold, continue climb-in-hold to 1600.

ATIS* 307.025	APP CON 124.025 313.7	NAVY KEY WEST TOWER* 118.575 340.25	GND CON 121.7 336.45	CLNC DEL 121.2 357.4	ASR/PAR
------------------	--------------------------	--	-------------------------	-------------------------	---------



CATEGORY	A		B		C		D	
LNAV/VNAV DA	254-¾		250		(300-¾)			
LNAV MDA	460-1	456 (500-1)	460-1¾	456 (500-1%)				
◻ CIRCLING	460-1 454 (500-1)	500-1 494 (500-1)	500-1½ 494 (500-1½)	560-2 554 (600-2)				

KEY WEST, FLORIDA
Amdt 2 23FEB23

24°34'N - 81°41'W

KEY WEST NAS (BOCA CHICA FLD) (KNQX)

RNAV (GPS) RWY 32

SE-3, 19 MAR 2026 to 16 APR 2026

SE-3, 19 MAR 2026 to 16 APR 2026