

KEY WEST, FLORIDA

RNAV (GPS) RWY 8

WAAS CH 65107 W08A	APCH CRS 079°	Rwy ldg TDZE 10,001 4	Arprt Elev 6
--------------------------	------------------	-----------------------------	-----------------

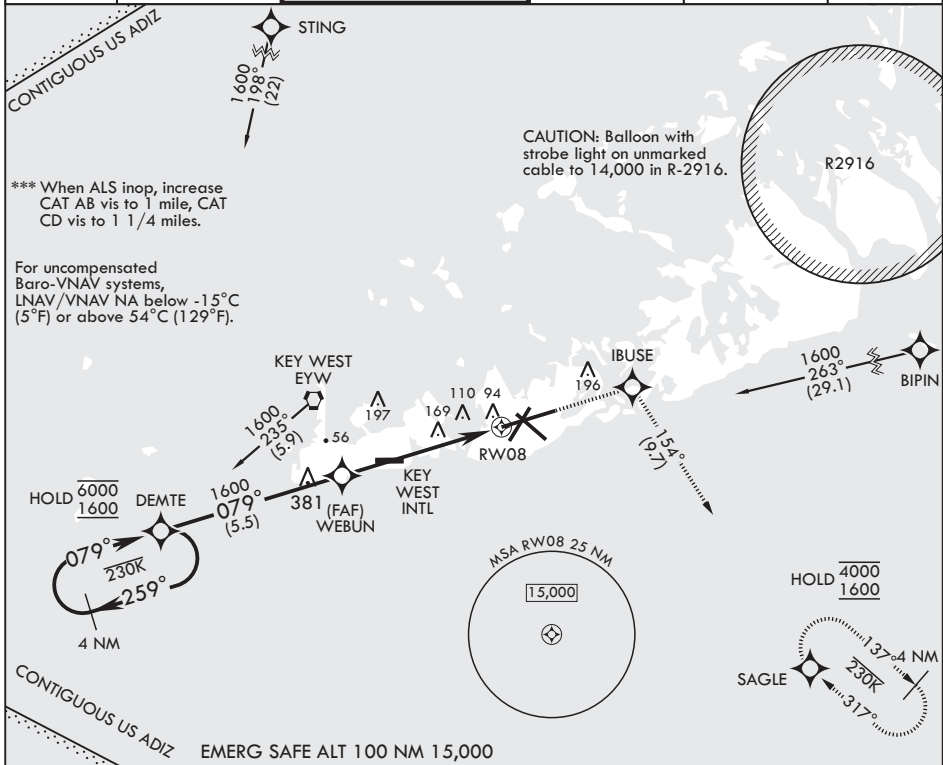
- (USN)

KEY WEST NAS (BOCA CHICA FLD) (KNQX)

RNP APCH	ALSIF-1
<p>*** When ALS inop, increase vis to 3/4 mile. ** When ALS inop, increase vis to 1 1/4 miles.</p>	

MISSED APPROACH: (Do not exceed 230 KIAS until IBUSE) Climb to 1600 direct IBUSE, track 154° to SAGLE and hold.

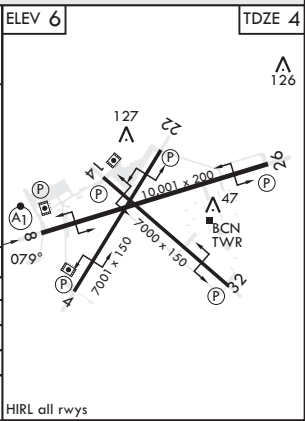
ATIS* 307.025	APP CON 124.025 313.7	NAVY KEY WEST TOWER* 118.575 340.25	GND CON 121.7 336.45	CLNC DEL 121.2 357.4	ASR/PAR
------------------	--------------------------	--	-------------------------	-------------------------	---------



SE-3, 19 MAR 2026 to 16 APR 2026

SE-3, 19 MAR 2026 to 16 APR 2026

4 NM Holding Pattern	1600	IBUSE	tr 154°	ELEV 6	TDZE 4
<p>6000 1600</p> <p>259°</p> <p>079°</p> <p>DEMOTE</p> <p>1600</p> <p>079°</p> <p>WEBUN</p> <p>1.2 NM to RW08</p> <p>4.9 NM</p> <p>GP 3.00° TCH 45</p>					
CATEGORY	A	B	C	D	
LPV DA*	204-1/2	200	(200-1/2)		
LNAV/VNAV DA**	427-3/4	423	(500-3/4)		
LNAV MDA***	440-1/2 436 (500-1/2)	440-3/4 436 (500-3/4)			
CIRCLING	440-1 434 (500-1)	500-1 494 (500-1)	500-1 1/2 494 (500-1 1/2)	560-2 554 (600-2)	



KEY WEST, FLORIDA
Amdt 3 23FEB23

24°34'N - 81°41'W

KEY WEST NAS (BOCA CHICA FLD) (KNQX)

RNAV (GPS) RWY 8