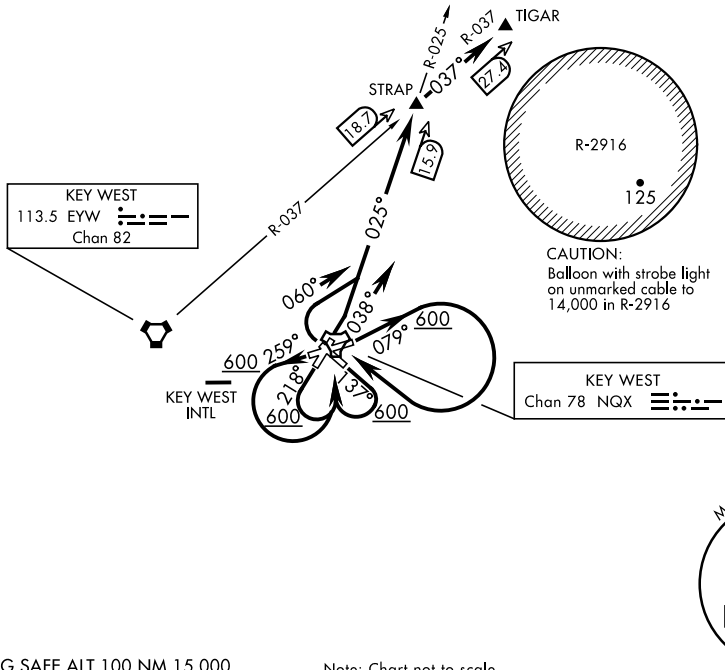


TIGAR FOUR DEPARTURE (OBSTACLE) (TIGAR4.TIGAR)

ATIS ★ 307.025
 CLNC DEL 121.2 357.4
 GND CON 121.7 336.45
 NAVY KEY WEST TOWER ★ 118.575 340.25
 NAVY KEY WEST DEP CON 124.025 313.7

[USN]

TACAN required



SE-3, 19 MAR 2026 to 16 APR 2026

SE-3, 19 MAR 2026 to 16 APR 2026

EMERG SAFE ALT 100 NM 15,000

Note: Chart not to scale

DEPARTURE ROUTE DESCRIPTION

TAKEOFF RWY 4: Climb heading 038° turn right to intercept NQX TACAN R-025, thence...
TAKEOFF RWY 8: Climb heading 079° to 600, then climbing right turn direct NQX TACAN thence...
TAKEOFF RWY 14: Climb heading 137° to 600, then climbing right turn direct NQX TACAN thence...
TAKEOFF RWY 22: Climb heading 218° to 600, then climbing left turn direct NQX TACAN, thence...
TAKEOFF RWY 26: Climb heading 259° to 600, then climbing left turn direct NQX TACAN, thence...
TAKEOFF RWY 32: Climbing right turn heading 060° to intercept NQX TACAN R-025, thence...
 ...via NQX R-025 to STRAP, then via EYW VORTAC R-037 to TIGAR, then via assigned transition or route.

TIGAR FOUR DEPARTURE (OBSTACLE) (TIGAR4.TIGAR)