

KEY WEST, FLORIDA

# TACAN Y RWY 32

TACAN NQX Chan <b>78</b>	APCH CRS <b>335°</b>	Rwy Idg TDZE Arprt Elev	<b>7000</b> <b>4</b> <b>6</b>
-----------------------------	-------------------------	-------------------------------	-------------------------------------

[USN]

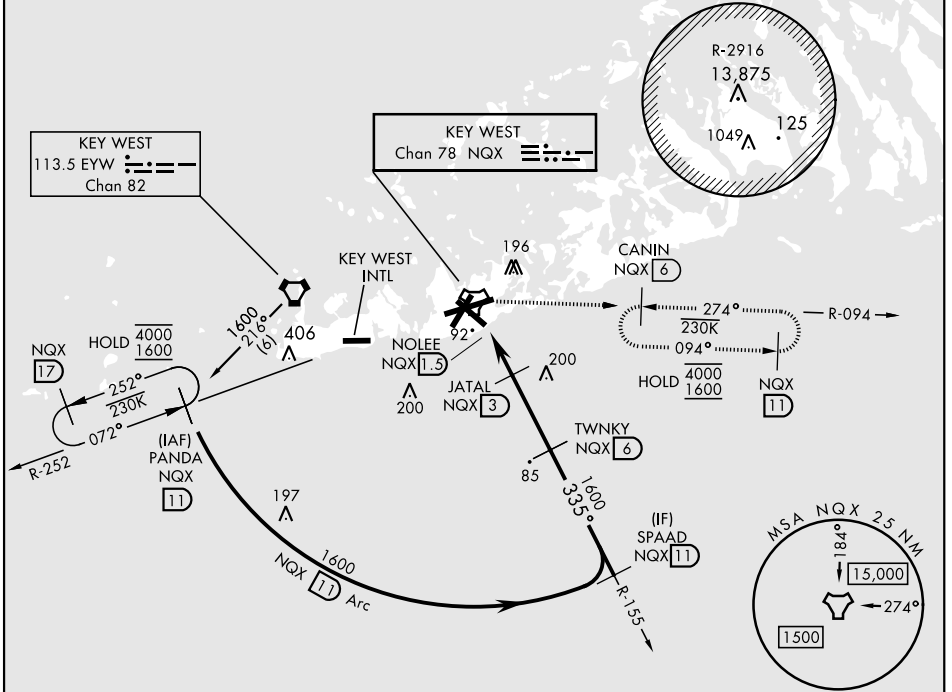
KEY WEST NAS (BOCA CHICA FLD) (KNQX)

**▼** MISSED APPROACH: Climb to 500. Then climbing right turn to 1600, intercept NQX R-094 to CANIN (NQX R-094/6 DME) and hold.

ATIS ★ <b>307.025</b>	NAVY KEY WEST APP CON <b>124.025 313.7</b>	NAVY KEY WEST TOWER ★ <b>118.575 340.25</b>	GND CON <b>121.7 336.45</b>	CLNC DEL <b>121.2 357.4</b>	ASR/PAR
--------------------------	---	--	--------------------------------	--------------------------------	---------

CAUTION: Short Intermediate Segment

CAUTION: Balloon with strobe light on unmarked cable to 14,000 in R-2916.

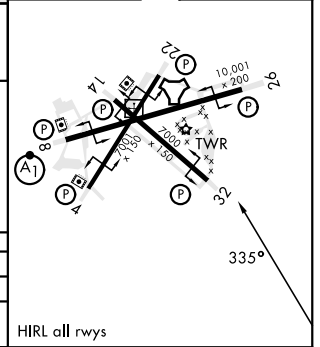
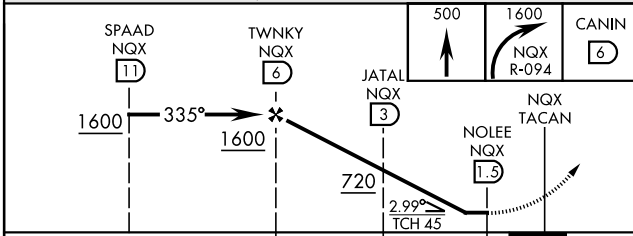


SE-3, 19 MAR 2026 to 16 APR 2026

SE-3, 19 MAR 2026 to 16 APR 2026

EMERG SAFE ALT 100 NM 15,000

ELEV	6	TDZE	4
------	---	------	---



CATEGORY	A	B	C	D
S-32	360-1	356	(400-1)	
CIRCLING	440-1 434 (500-1)	500-1 494 (500-1)	500-1½ 494 (500-1½)	560-2 554 (600-2)

HIRL all rwys

KEY WEST, FLORIDA

24°34'N-81°41'W

KEY WEST NAS (BOCA CHICA FLD) (KNQX)

Orig 23FEB23

# TACAN Y RWY 32