

KEY WEST, FLORIDA

# TACAN Y RWY 8

TACAN NQX Chan <b>78</b>	APCH CRS <b>072°</b>	Rwy ldg TDZE Arpt Elev <b>10,001</b> <b>4</b> <b>6</b>
-----------------------------	-------------------------	-----------------------------------------------------------------------

[USN]

KEY WEST NAS (BOCA CHICA FLD) (KNQX)

▼ \* When ALS inop, increase CAT AB vis to 1 mile, CAT CD vis to 1¼ miles.

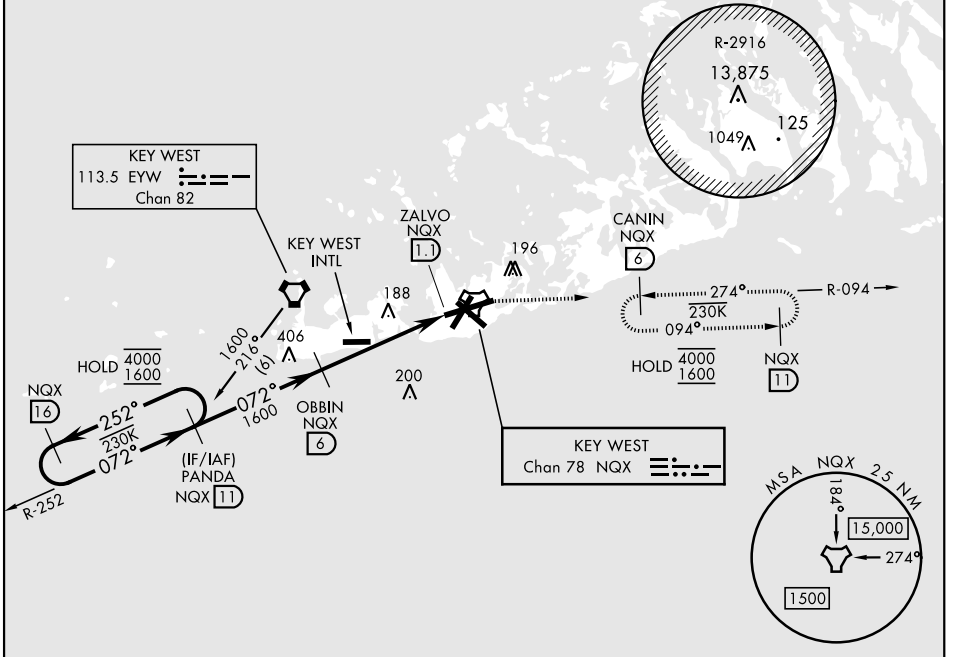
ALSF-1 

MISSED APPROACH: Climb to 1600 via R-252 to NQX TACAN then via R-094 to CANIN (NQX R-094/6 DME) and hold.

ATIS ★ <b>307.025</b>	NAVY KEY WEST APP CON <b>124.025 313.7</b>	NAVY KEY WEST TOWER ★ <b>118.575 340.25</b>	GND CON <b>121.7 336.45</b>	CLNC DEL <b>121.2 357.4</b>	ASR/PAR
--------------------------	-----------------------------------------------	------------------------------------------------	--------------------------------	--------------------------------	---------

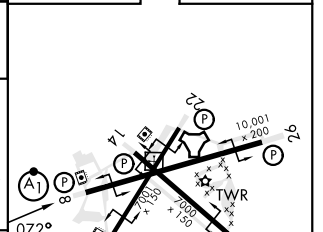
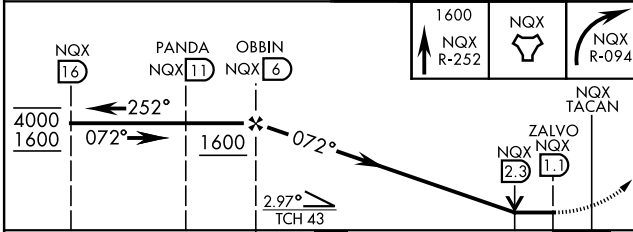
CAUTION: Short Intermediate Segment

CAUTION:  
Balloon with strobe light  
on unmarked cable to  
14,000 in R-2916.



EMERG SAFE ALT 100 NM 15,000

ELEV	6	TDZE	4
------	---	------	---



CATEGORY	A	B	C	D
S-8 *	440-½ 436	(500-½)	440-¾ 436	(500-¾)
CIRCLING	440-1 434 (500-1)	500-1 494 (500-1)	500-1½ 494 (500-1½)	560-2 554 (600-2)

HIRL all rwys

KEY WEST, FLORIDA

24°34'N-81°41'W

KEY WEST NAS (BOCA CHICA FLD) (KNQX)

Amtd 4 23FEB23

# TACAN Y RWY 8

SE-3, 19 MAR 2026 to 16 APR 2026

SE-3, 19 MAR 2026 to 16 APR 2026