

KEY WEST, FLORIDA

VOR/DME RWY 26

EYW VORTAC 113.5 Chan 82	APCH CRS 270°	Rwy ldg 10,001 TDZE 5 Arpt Elev 6
--	-------------------------	--

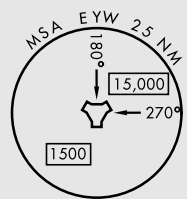
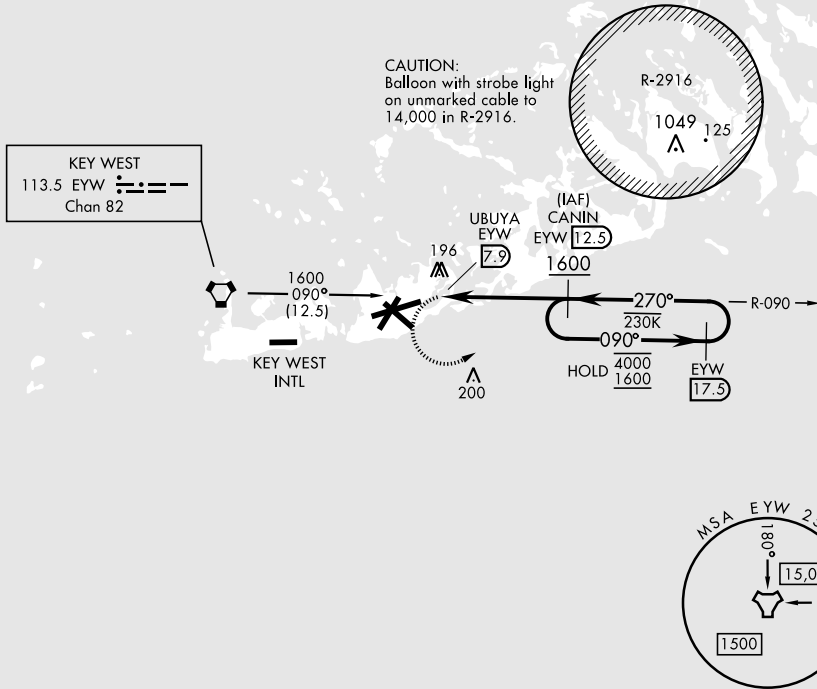
[USN]

KEY WEST NAS (BOCA CHICA FLD) (KNQX)

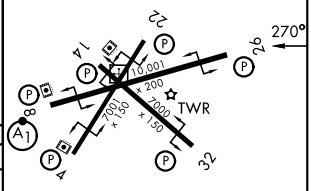
RADAR required	MISSED APPROACH: Climb to 500, then climbing left turn to 1600 to intercept EYW VORTAC R-090 to CANIN and hold.
----------------	---

ATIS ★ 307.025	NAVY KEY WEST APP CON 124.025 313.7	NAVY KEY WEST TOWER ★ 118.575 340.25	GND CON 121.7 336.45	ASR/PAR
--------------------------	---	--	--------------------------------	---------

CAUTION: Final approach course crosses the extended runway centerline 5018' from threshold.



EMERG SAFE ALT 100 NM 15,000					ELEV 6	TDZE 5
500	1600	CANIN EYW 12.5	VGSI and descent angles to coincident. (VGSI angle 3.00/TCH 43)			
↑	EYW R-090					
UBUYA EYW 7.9		CANIN EYW 12.5	EYW 17.5	4000	1600	
270°		090°	270°	1600		
0.9 NM		4.6 NM				
CATEGORY	A	B	C	D		
S-26	460-1	454 (500-1)	460-1 3/8	454 (500-1 3/8)		
CIRCLING	460-1	500-1	500-1 1/2	560-2		
	454 (500-1)	494 (500-1)	494 (500-1 1/2)	554 (600-2)	HIRL all rwys	



KEY WEST, FLORIDA
Amdt 4 23FEB23

24°34'N-81°41'W

KEY WEST NAS (BOCA CHICA FLD) (KNQX)

VOR/DME RWY 26

SE-3, 19 MAR 2026 to 16 APR 2026

SE-3, 19 MAR 2026 to 16 APR 2026