

KEY WEST, FLORIDA

VOR/DME or TACAN Z RWY 8

EYW VORTAC 113.5 Chan 82	APCH CRS 098°	Rwy Idg TDZE Arprt Elev	10,001 4 6
--	-------------------------	-------------------------------	---------------------------------------

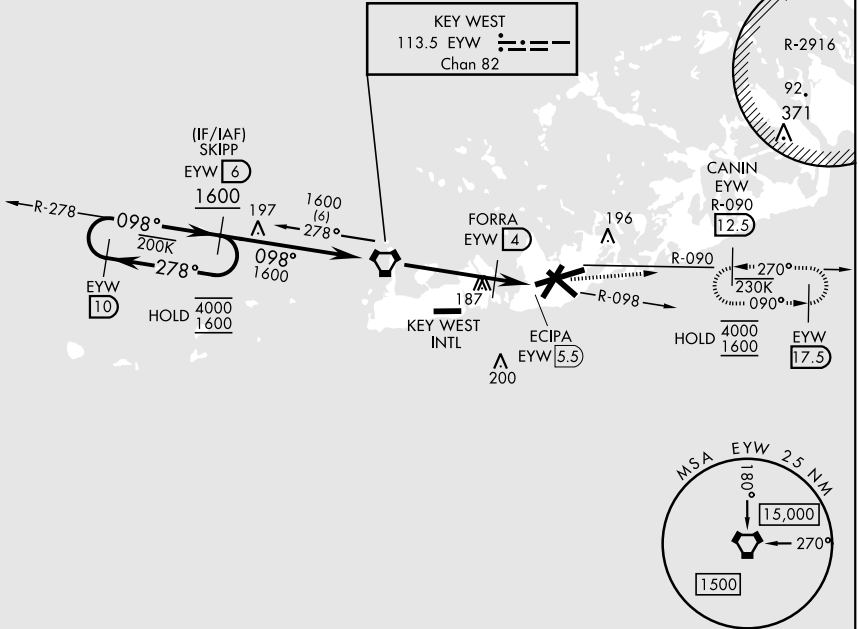
[USN]

KEY WEST NAS (BOCA CHICA FLD) (KNQX)

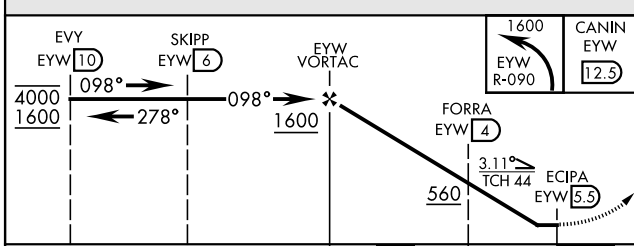
ALSIF-1  MISSED APPROACH: Climbing left turn to 1600 to intercept EYW R-090 to CANIN and hold.

ATIS ★ 307.025	NAVY KEY WEST APP CON 124.025 313.7	NAVY KEY WEST TOWER ★ 118.575 340.25	GND CON 121.7 336.45	CLNC DEL 121.2 357.4	ASR/PAR
--------------------------	---	--	--------------------------------	--------------------------------	---------

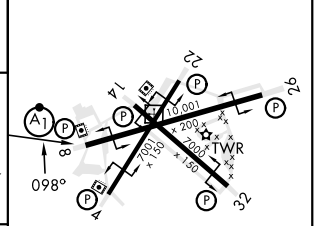
CAUTION:
Balloon with strobe light
on unmarked cable to
14,000 in R-2916.



EMERG SAFE ALT 100 NM 15,000



ELEV	6	TDZE	4
------	---	------	---



CATEGORY	A	B	C	D
S-8	440-1 436 (500-1)		440-1 ¼ 436 (500-1 ¼)	
CIRCLING	440-1 434 (500-1)	500-1 494 (500-1)	500-1 ½ 494 (500-1 ½)	560-2 554 (600-2)

HIRL all rwys

KEY WEST, FLORIDA
Amdt 4 23FEB23

24°34'N-81°41'W KEY WEST NAS (BOCA CHICA FLD) (KNQX)

VOR/DME or TACAN Z RWY 8

SE-3, 19 MAR 2026 to 16 APR 2026

SE-3, 19 MAR 2026 to 16 APR 2026