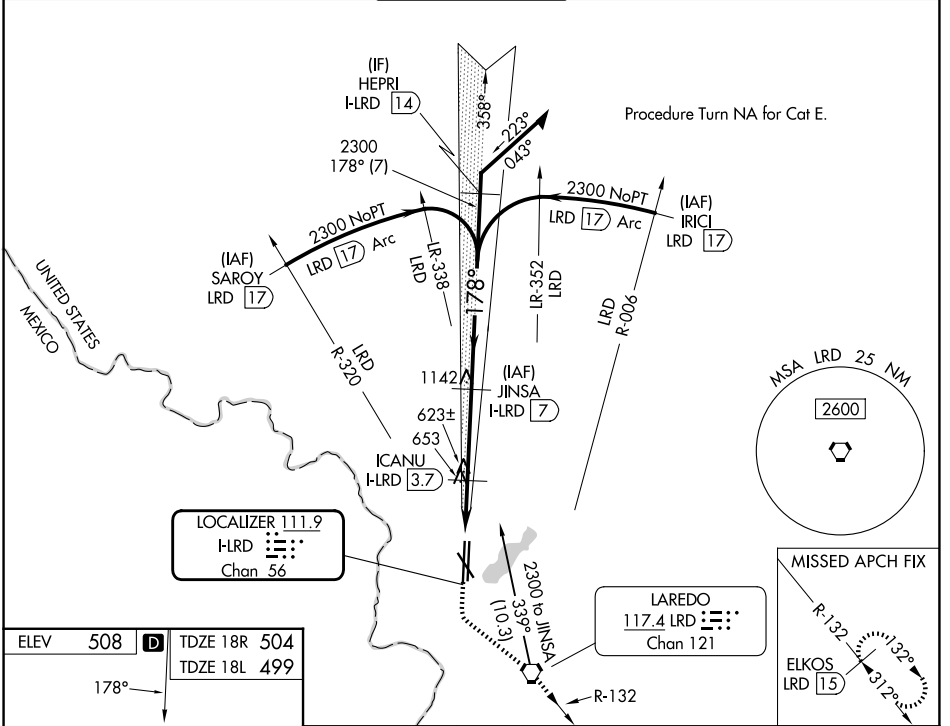


LOC/DME I-LRD	APP CRS	18R	18L
111.9	178°	Rwy Ldg 8743	8236
Chan 56		TDZE 504	499
		Apt Elev 508	508

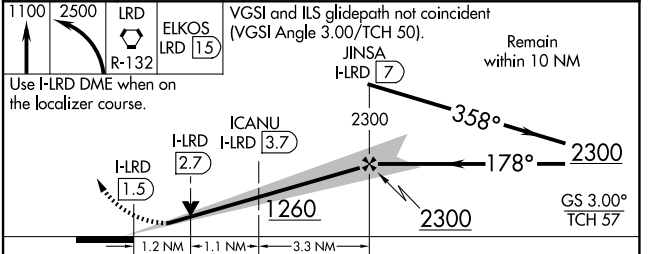
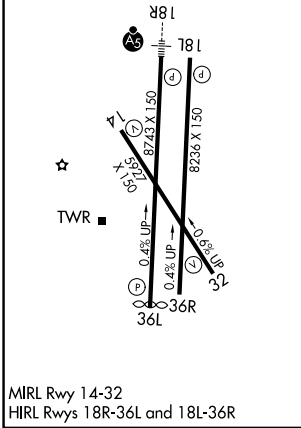
ILS or LOC RWY 18R

LAREDO INTL (L.R.D)

DME required.		MALS/R		MISSED APPROACH: Climb to 1100 then climbing left turn to 2500 direct LRD VORTAC and on LRD VORTAC R-132 to ELKOS/LRD 15 DME and hold.	
<p>▼ Circling NA southwest of Rwy 14 and west of Rwy 36L. ▲ For inop ALS, increase S-ILS 18R Cat E visibility to ¾ SM and increase S-LOC 18R Cat C, D, and E visibility to 1½ SM.</p>		<p>ALSR</p>			
ATIS	HOUSTON CENTER	LAREDO TOWER ★	GND CON	UNICOM	
125.775	127.8 307.2	120.1(CTAF) 0 257.9	121.8	122.95	



ELEV 508	D	TDZE 18R 504	TDZE 18L 499
178°		18R	18L



CATEGORY	A	B	C	D	E
S-ILS 18R	704-½ 200 (200-½)				
S-LOC 18R	920-½	416 (500-½)	920-¾	416 (500-¾)	
SIDESTEP 18L	920-1	421 (500-1)	920-1½	920-2	421 (500-2)
CIRCLING	940-1	980-1	1100-1½	1200-2¼	1200-2½
	432 (500-1)	472 (500-1)	592 (600-1½)	692 (700-2¼)	692 (700-2½)

SC-3, 19 MAR 2026 to 16 APR 2026

SC-3, 19 MAR 2026 to 16 APR 2026